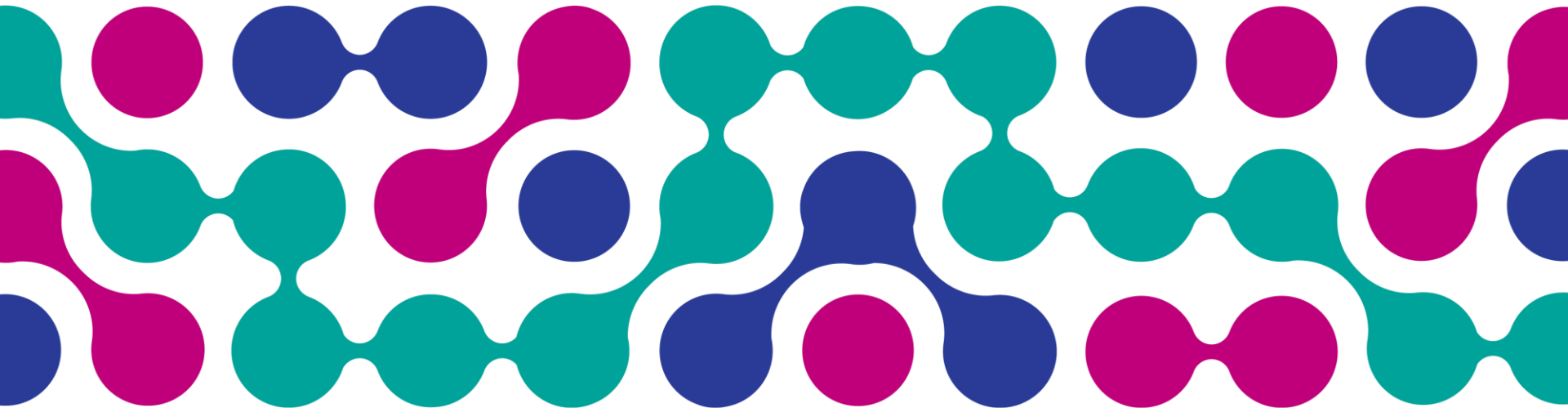
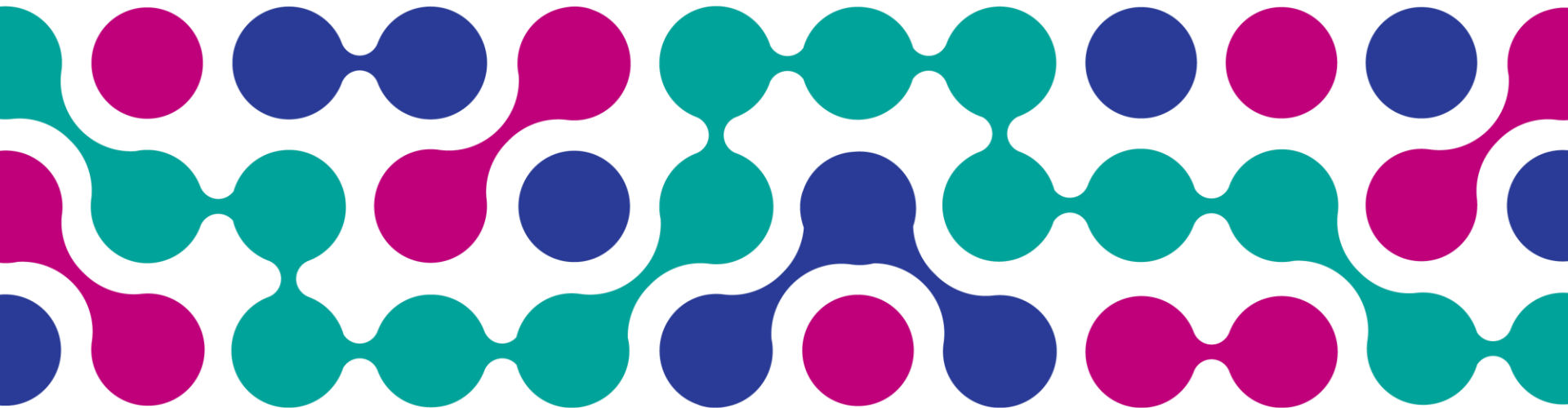


# BSW ICB Vaccination Programme Autumn/Winter 2025/2026

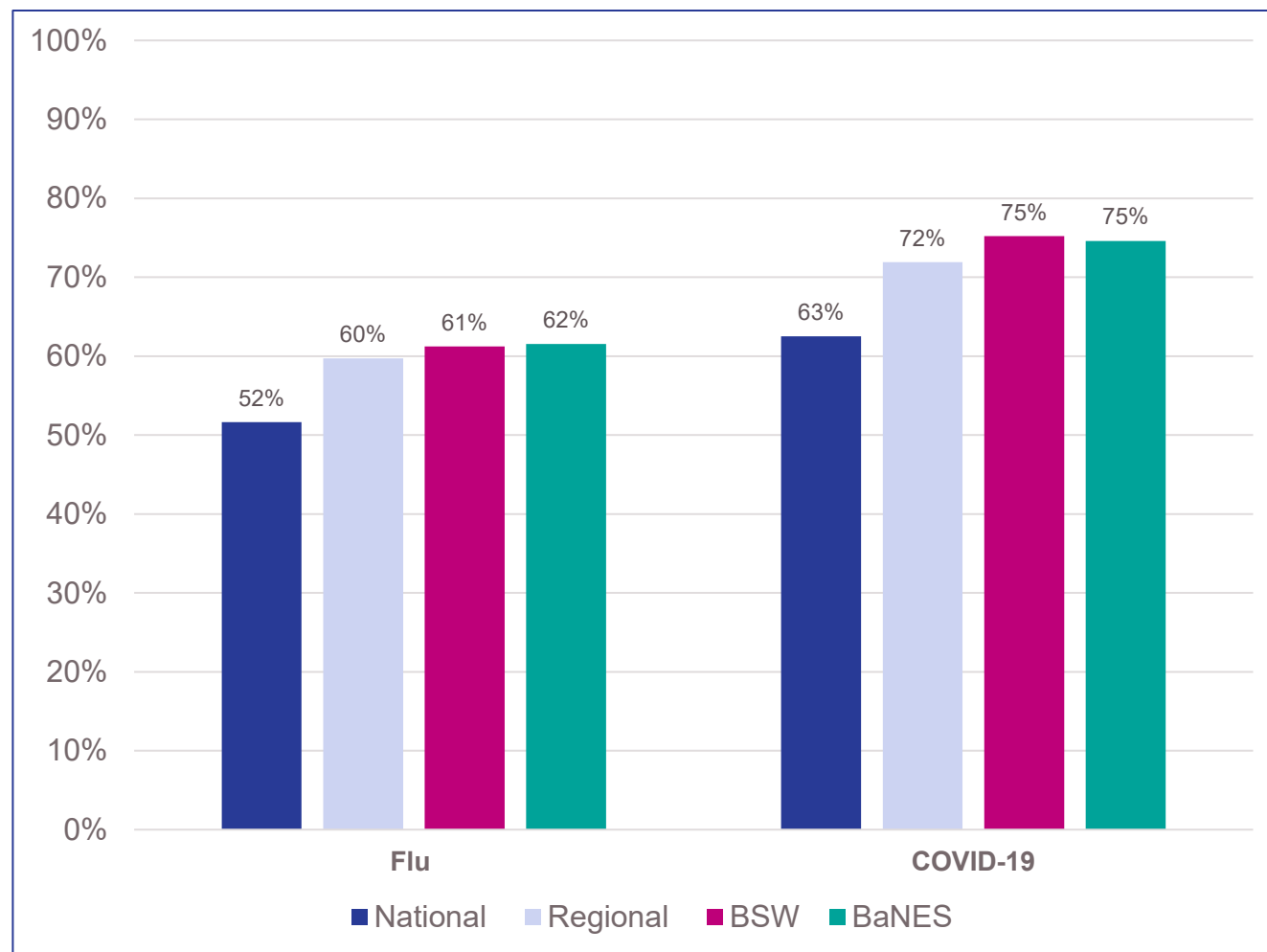
## BaNES HOSC Update



# Summary from previous seasons



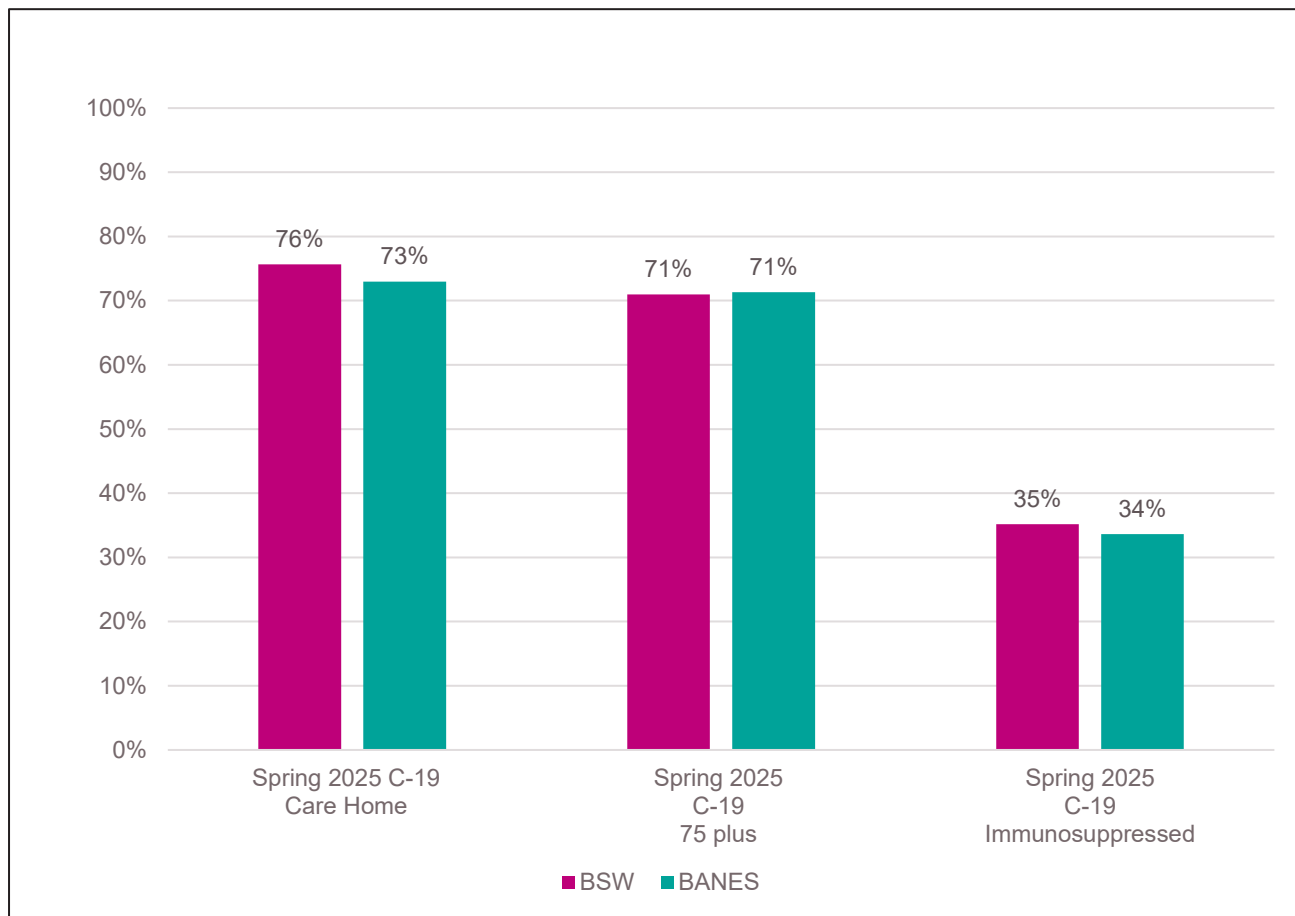
# Flu and Covid-19 uptake (Autumn 2024/25) (data as at 31/03/2025)



BaNES shows steady performance, and remains 12 per cent higher than the national Covid-19 average and 10 per cent higher for flu

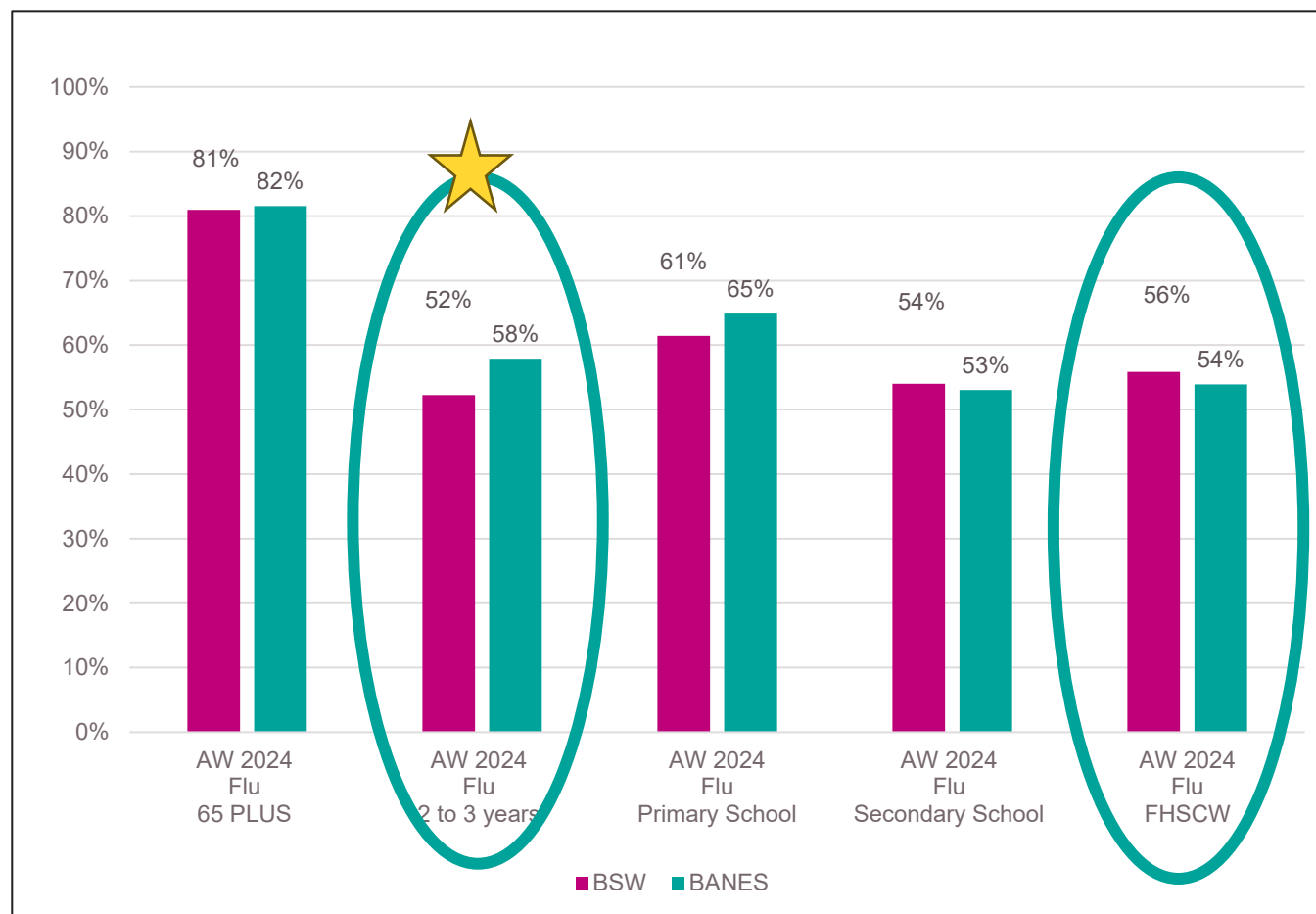
# Covid-19 uptake

## (Spring 2025)



Immunosuppressed  
traditionally  
challenging to keep  
uptake due to coding  
and/or awareness

# Flu (Autumn 2024)

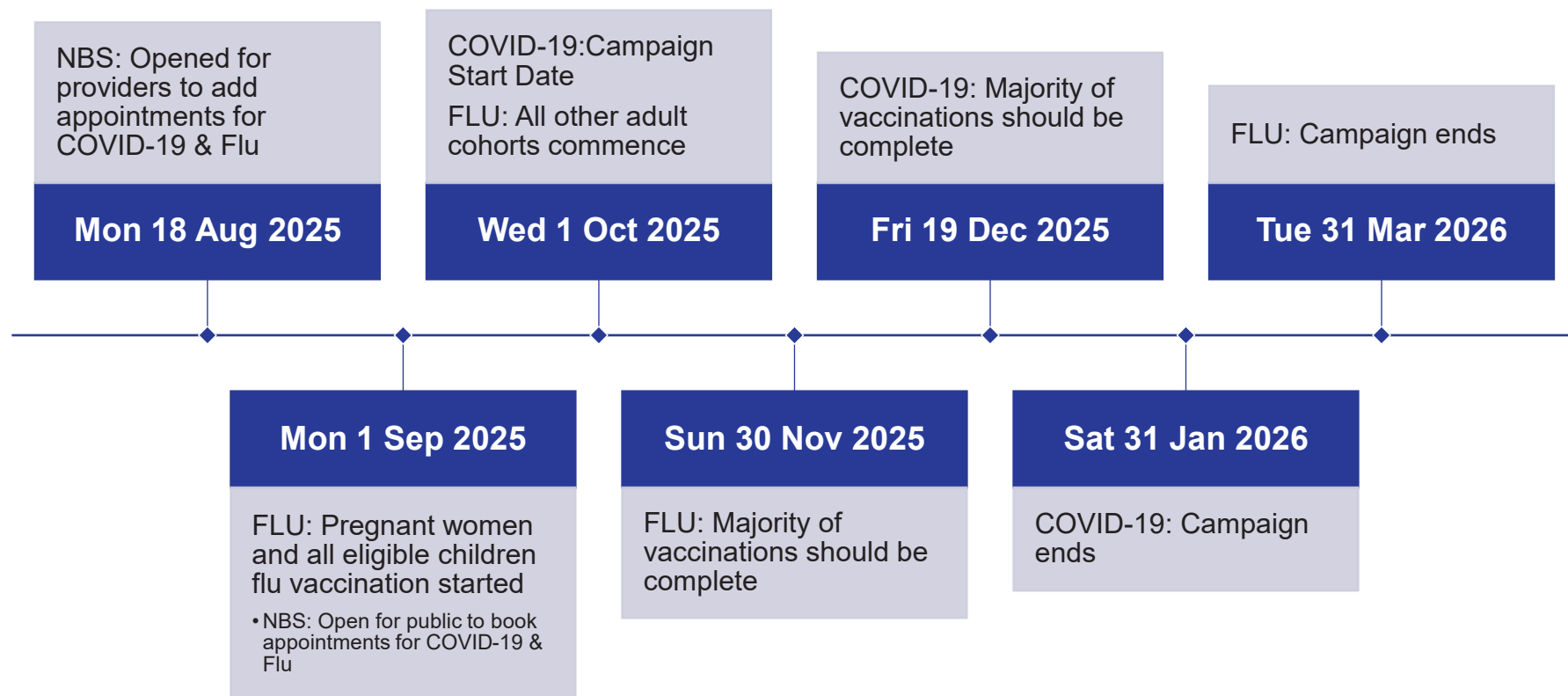


2-3 yr flu is a priority nationally and locally, and work is needed to increase this uptake, although BaNES has highest in BSW.

Community pharmacies will be offering in 2025/2026

BSW trusts had the highest staff Flu uptake nationally at 56%

# Autumn and winter 2025/2026 Covid-19 and flu dates



# BaNES Provider Network



Bath and North East Somerset,  
Swindon and Wiltshire  
Integrated Care Board

## PCN'S

All 5/6 PCNs opted IN

Contracted deliver to all eligible patients alongside Flu

Asked to prioritise care homes & housebound patients

## Community Pharmacies

19 COVID-19 sites in total

All existing sites

No new sites

13 contracted to offer flu for 2-3yrs

## Hospital Hubs

1 acute trusts

Inpatients (long stay) and COVID-19 & Flu offer

Maternity and FHSCW Flu only offer

## Community Provider

Still Onboarding

Inpatient offer at community wards in line with acute trusts – COVID-19 and Flu

FHSCW – Flu only offer

## Access & Inequality Provider

Housebound and care homes completion where no contract in place with PCN/practice

Access clinics where no other provision available

Inequalities clinics

# Current seasonal progress

(Based on available 03/10/2025)



Bath and North East Somerset,  
Swindon and Wiltshire  
Integrated Care Board

