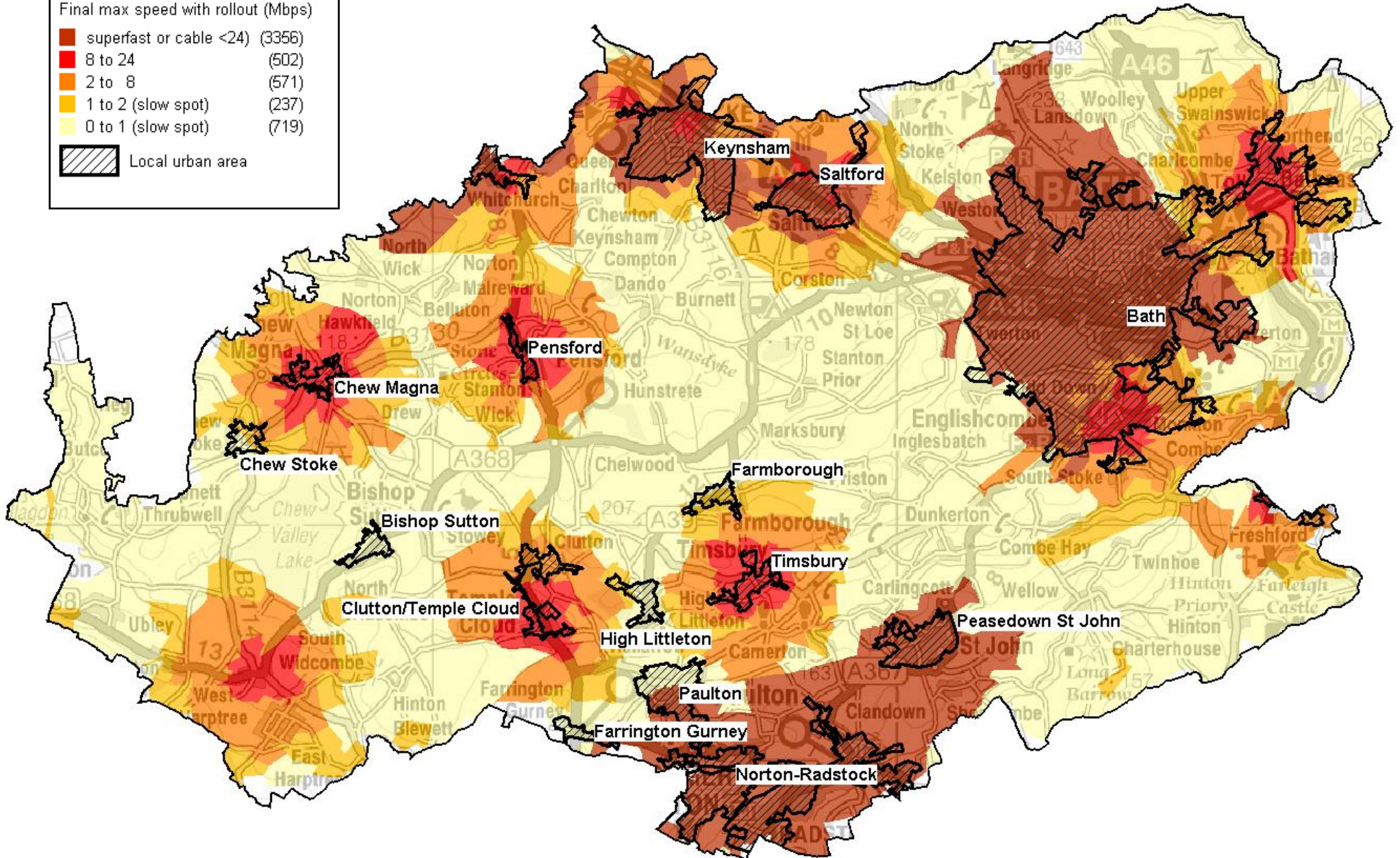
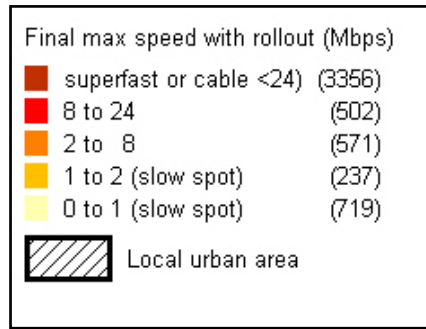
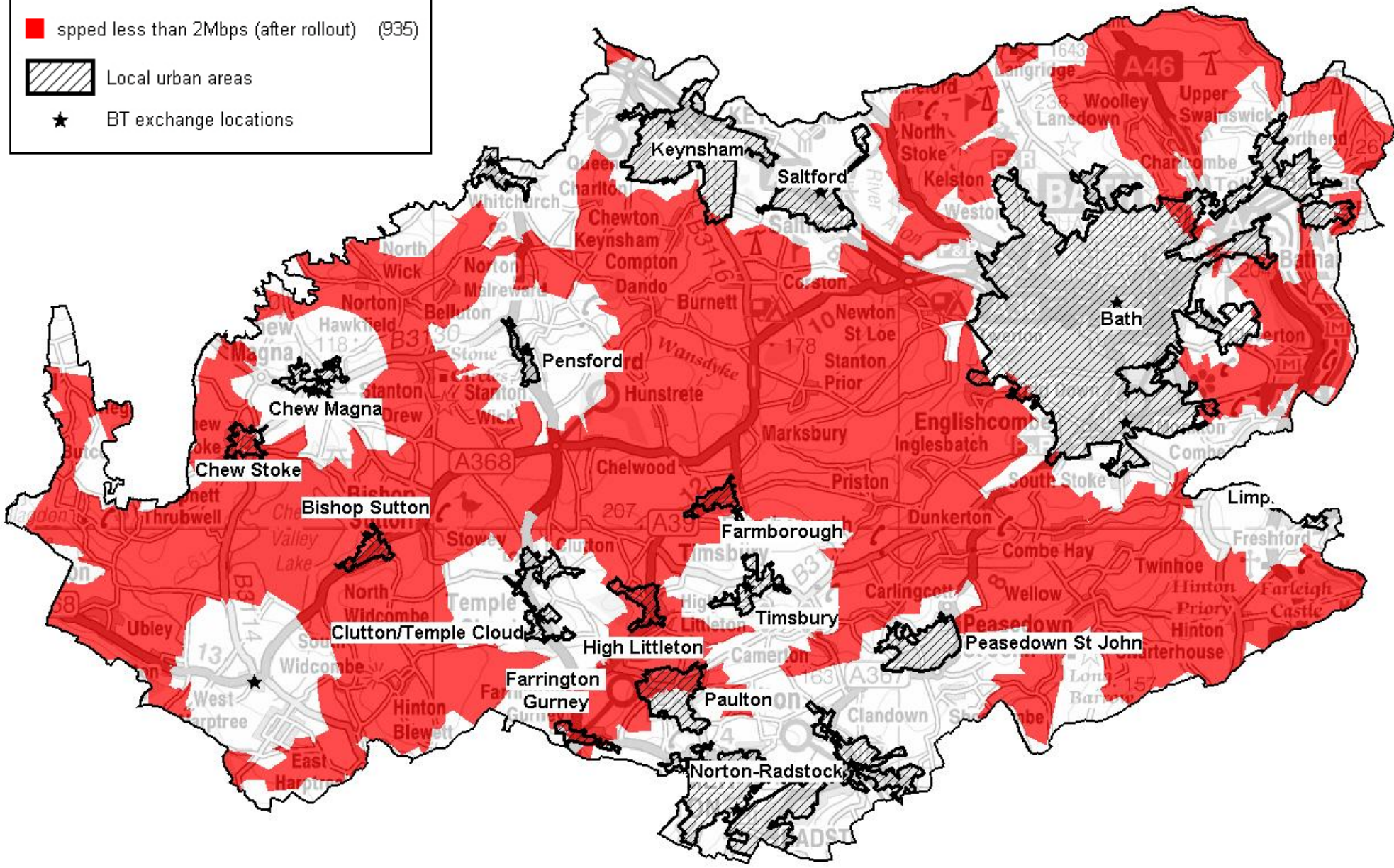
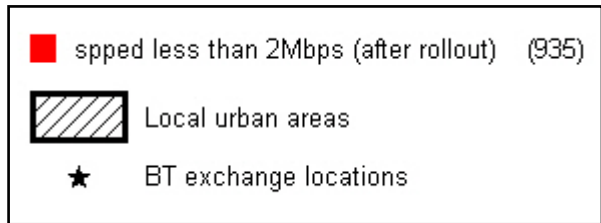


## APPENDIX 1: Connectivity in Bath and North East Somerset

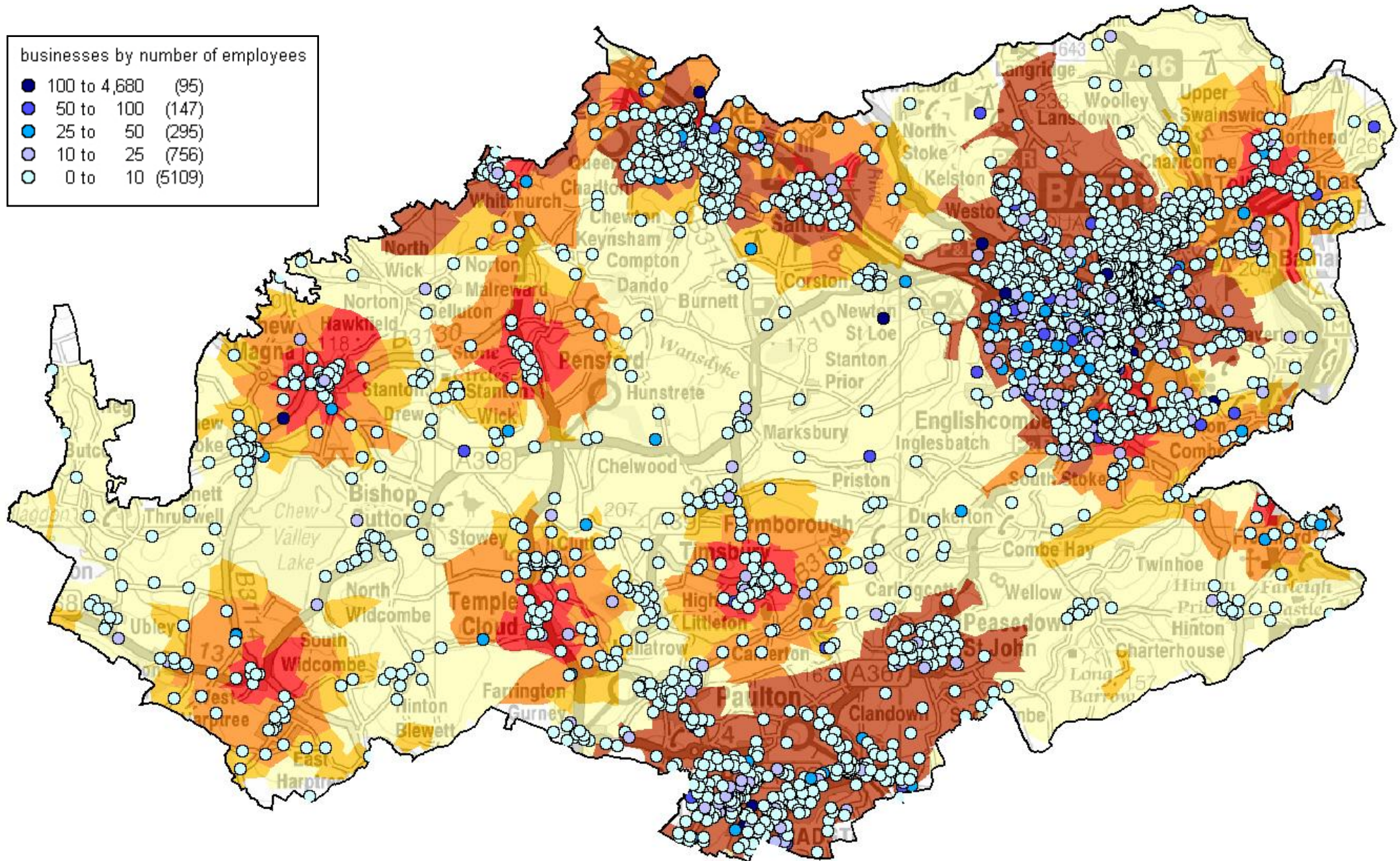
1) Breakdown of maximum theoretical download speeds across B&NES by postcode once BT FTTC rollout complete (includes cable)  
(Point Topic data)



2) Postcodes continuing to receive poor or no broadband service (less than 2Mbps maximum theoretical download speed) after BT FTTC rollout (Point Topic data)



3) IDBR businesses by number of employees and maximum download speed including BT FTTC rollout and cable



4) Postcode areas with virgin cable coverage (Point Topic data)

