

POST TITLE: Executive Director of Sustainable Communities

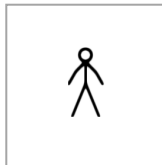
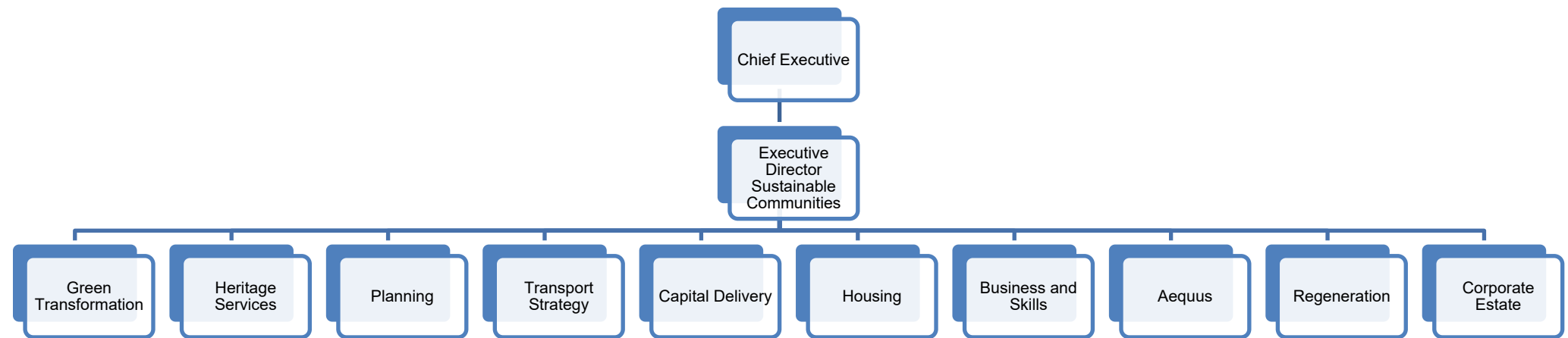
GRADE: SPOT SALARY
PROFILE: Executive Director I
POST NO: TBC

This schedule needs to be read in conjunction with the role profile

SUMMARY OF PURPOSE

To develop and deliver the vision for Bath and North East Somerset as a sustainable place for the future, delivering the priorities in the Council's Corporate strategy, balancing economic, environmental and societal needs.

ORGANISATION CHART AND STAFFING (to be confirmed in early 2024)



Total compliment of 560 staff (395 FTE) (including casuals staff)
Cross functional project management of staff

FINANCIAL DIMENSIONS

£

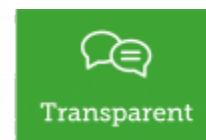
Staffing Costs	108,601,526
Gross expenditure	508,207,008
Gross Income	(377,181,386)
Net Budget	131,025,622

Accountable for delivery of allocated income growth and savings targets.

SERVICE PORTFOLIO

- Green transformation – the response to the climate and ecological emergencies
- Housing and homelessness support
- Sponsorship of the Council's Housing Development Company: Aequus
- Planning and planning policy including enforcement
- Strategic transport and transport policy
- Economic development, business and skills including tourism and the visitor economy
- Regeneration, including Enterprise Zones
- Culture strategy
- Heritage services, including indoor events
- Corporate estate and the Corporate Landlord
- Capital delivery
- Community engagement

SPECIFIC ACCOUNTABILITIES	SPECIFIC QUALIFICATIONS, TRAINING, EXPERIENCE OR KNOWLEDGE REQUIRED
<ul style="list-style-type: none"> • Development of a shared vision for the future of Bath and North East Somerset as a sustainable place • Provide strategic leadership to develop the local capacity and partnerships required to deliver the Council's vision and objectives • Direct line management over the delivery of high profile statutory and non-statutory functions, with a high level of political interest • Strategic leadership on the following: <ul style="list-style-type: none"> ○ Economic Strategy ○ Local Plan ○ Joint Local Transport Plan and Transport Delivery Plans ○ Housing Strategy and Delivery Plans ○ Climate and Ecological Emergency Plans ○ Culture and Tourism Strategy ○ Corporate Estate Asset Strategy • Stakeholder engagement with key partners, including: <ul style="list-style-type: none"> ○ West of England Combined Authority ○ Local Enterprise Partnership ○ Anchor institutions and educational establishment ○ Business forum, including the BID ○ Private sector partners, including Aequus ○ Community representatives and the voluntary sector • Delivery of all major capital projects. • Delivery of major regeneration projects across the district to secure the business and housing development required. 	<ul style="list-style-type: none"> • Significant experience of strategic leadership • Significant programme and project management skills. • Significant experience of working in partnership to deliver strategic objectives. • Experience of managing a large capital programme is desirable.



Date: November 2023