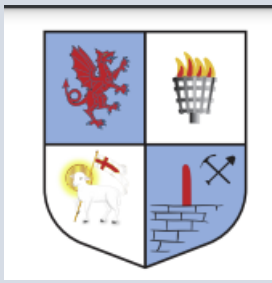


Peasedown St John



Improving access to our open spaces

- Peasedown St John Parish Council has strived to improve the facilities for the residents to benefit from the outdoor spaces owned and managed by the parish council

Improving access to our open spaces

From 30 homes in 1800

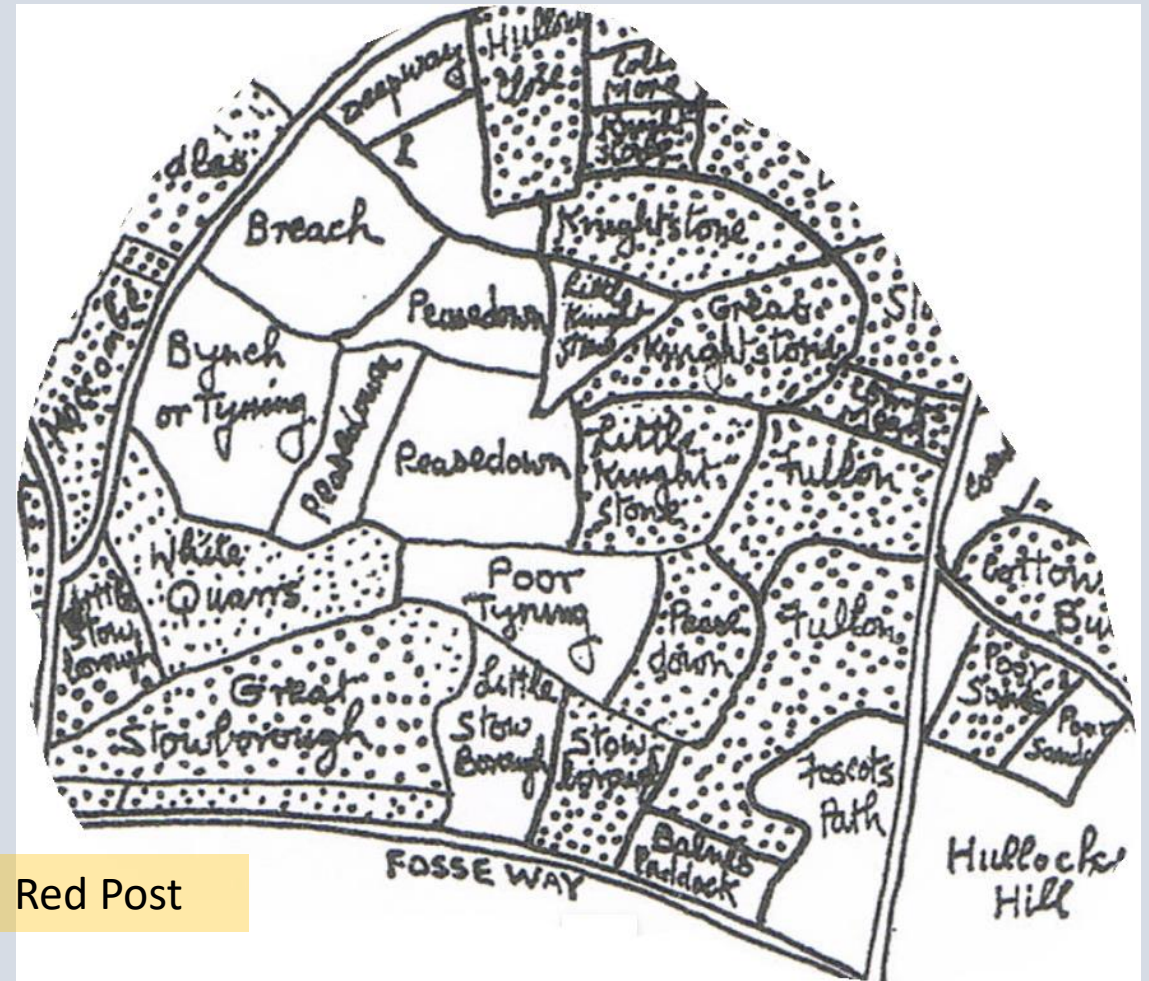
To 3000 homes in 2022

How the parish developed over the intervening years and the parish's open areas



Peasedown, Stowborough and Knightstone

- From the diaries of Reverend John Skinner (1772 - 1839) this sketch shows several enclosures named Peasedown
- Peasedown as a place name did not appear on an official map until the mid 1800s

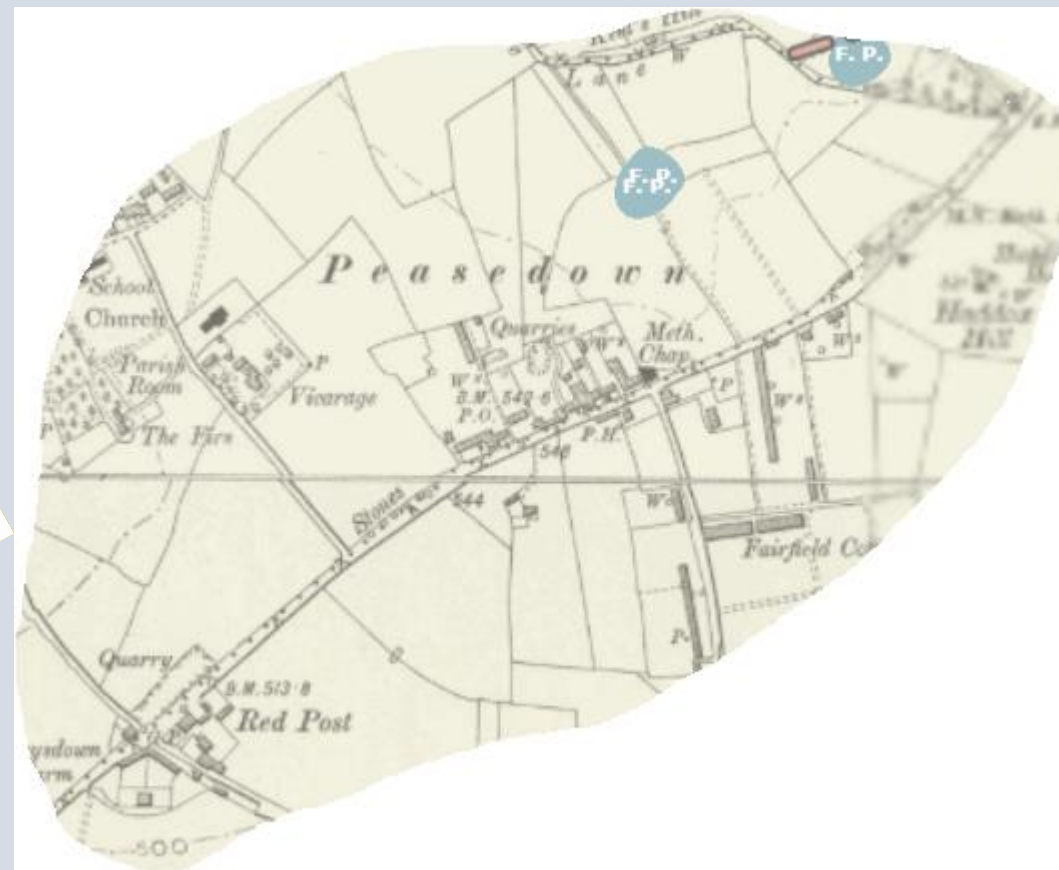


Red Post

Peasedown, Stowborough and Knightstone



Red Post



OS inch map 1888 - 1913

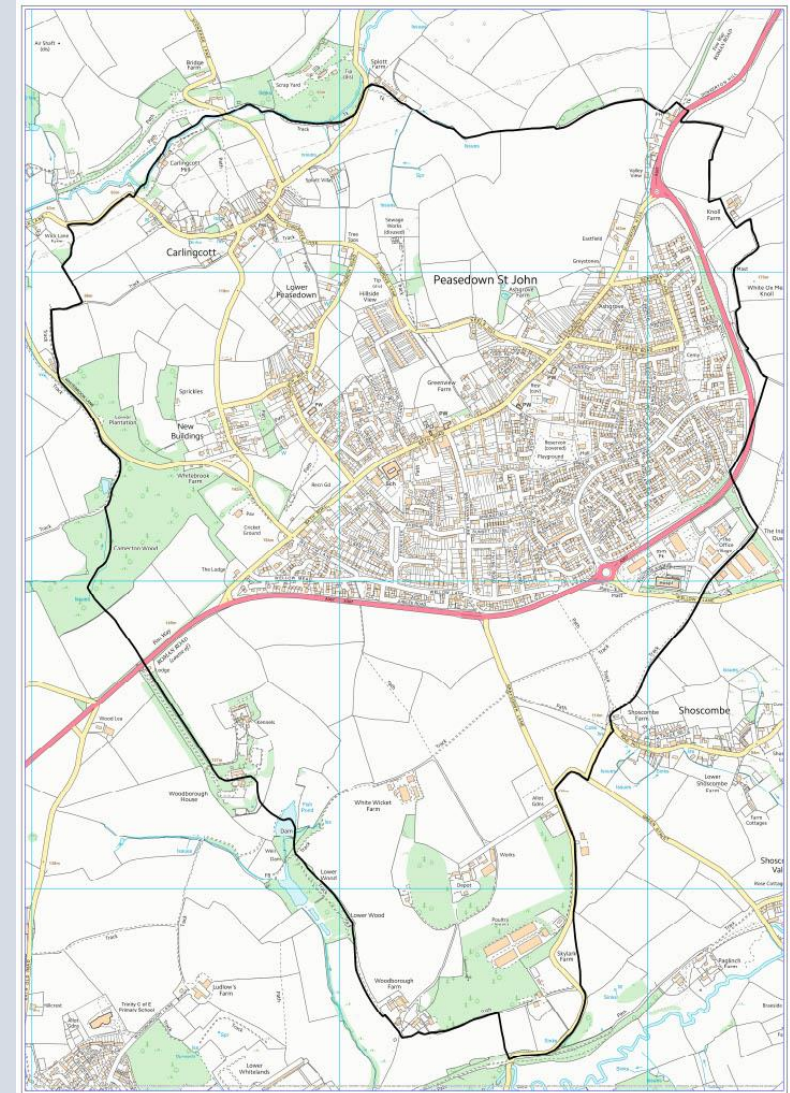
At the turn of the century there were only a few houses alongside the Fosseway in the place called Peasedown as shown on this map

- north of the Fosseway was the parish of Dunkerton
- south was the parish of Wellow
- to the West was the parish of Camerton



Peasedown St John a civil parish

- Peasedown St John became a civil parish in 1955
- The parish was formed from parts of the parishes of Camerton, Dunkerton and Wellow.



Open Spaces of Peasedown St John

Peasedown St John inherited the:

- Miners Welfare Recreation Ground from Camerton when the new parish was established

Over the decades the parish has developed other areas:

- Ashgrove Cemetery – owned by the parish
- Beacon Field – long lease from Bath and North East Somerset
- Ecewiche Green – owned by the parish
- The “Tump” in Carlingcott – owned by the parish
- Allotments at Braysdown – rented from a local farmer

Recreation Ground Charity

Miners' Welfare Recreation Ground

Land registry title document July 1923 at that time the land was in Camerton Parish

Miners' Welfare

The mining industry had a statutory obligation to provide money for the social welfare of its employees

Recreation Ground Charity

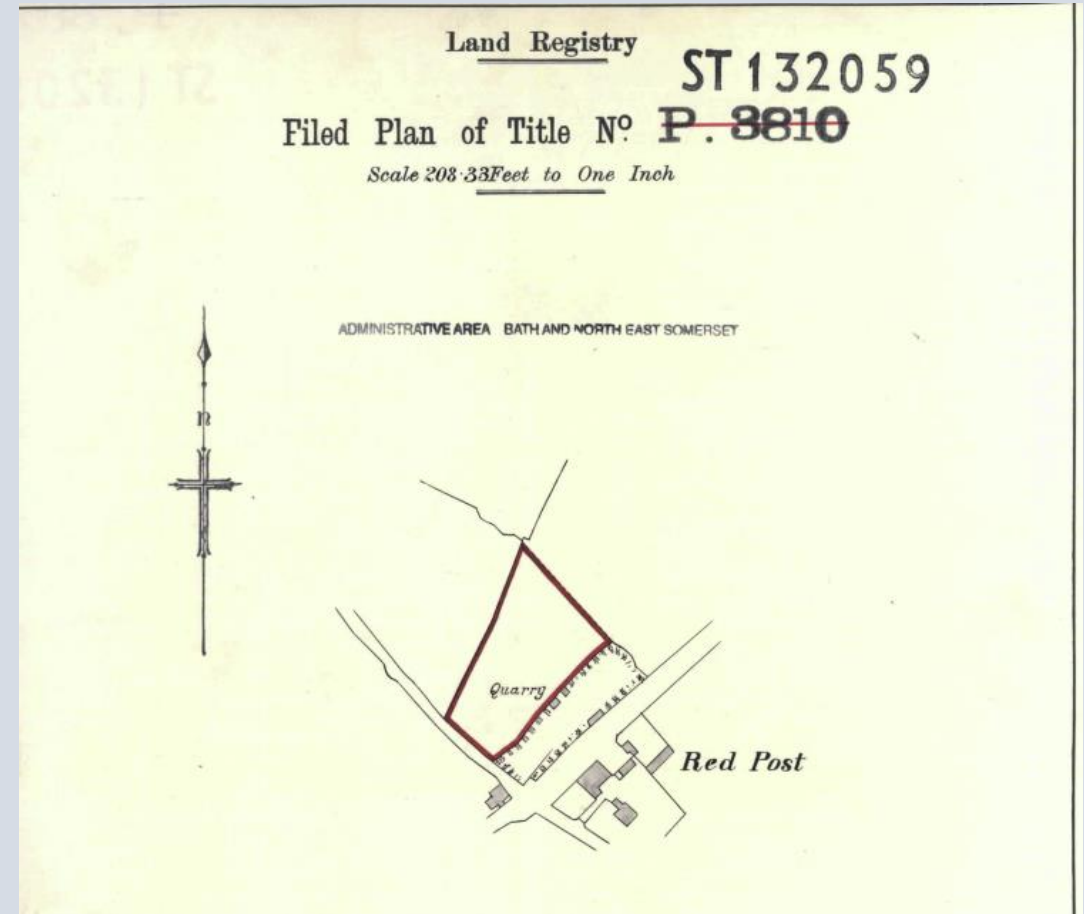
The Parish Council became the Charity Trustee of the land in 1996, which is sub-divided into two charities, the recreation ground charity and children's playground charity.



Children's Playground Charity

Children's Playground Charity

The Parish Council became the Charity Trustee of the land in 1996, which is subdivided into two charities, the recreation ground charity and children's playground charity.



Land registry title document 1923

Miners Welfare Recreation Ground



Recent project to lay a tarmac path around the entire site

The parish council decided on tarmac paths around the site to make it more accessible to all the residents, equality gates had previously been installed



Miners Welfare Recreation Ground

Work in Progress laying paths
at the Recreation Ground



Miners Welfare Recreation Ground

Progress in the laying of paths
on the Recreation Ground
with a new entrance onto
Bath Road



Miners Welfare Recreation Ground

Miners Football Team



Miners Welfare Recreation Ground

The new path from the
Whitebrook Lane entrance
that joins up with Church
Road

Skate Park in the
background



Miners Welfare Recreation Ground

Shelter used by all



Ashgrove Cemetery

1955

- the parochial church council of St John the Baptist alerted the new council that there were few spaces remaining in the church yard
- They requested that the new parish council make alternative arrangements
- Land was purchased with a loan from Somerset County Council of £7000 for a period of 40 years.

Ashgrove Cemetery

- In the late 1980s a land exchange between the parish council and Westbury Homes and a financial consideration facilitated the building of the bypass
- Many improvements to Ashgrove Cemetery have followed.

Ashgrove Cemetery

The first burial was in 1958

During the last decade a
memorial garden and
cremated remains plots
have been added



Ashgrove Cemetery

Memorial garden



Ashgrove Cemetery

Pergola with seating is
a recent addition



Improving access to our open spaces

- Beacon Field and Ecewiche Green were gained as part of the housing development

Beacon Field

- Councillors enjoying an evening stroll and considering the site for the secure dog exercise area



Beacon Field

- Secure dog exercise area



Beacon Field

- Children's play area



- Multi User Games Area (MUGA) in the background



Ecewiche Green

Equality Gates at
5 entrances to
Ecewiche Green



Ecewiche Green

- Paths were laid
- 1000 trees planted
- The land was developed as agreed by the parish council with the developers of the large housing development in exchange for £1



Ecewiche Green

- Bench seats



The “Tump” Carlingcott

- A useful place to sit on the parish council seat for a rest before climbing back up to the centre of the village

The “Telephone box” has been refurbished by the parish council and is a book store for the residents



Parish Council Allotments at Braysdown

Environmentally friendly
soil toilet being installed

The parish council has
build raised beds at the
allotments



Improving access to our open spaces

Sources of Funding

- Precept
- Community Empowerment Fund B&NES Council
- Donations
- Quartet

Improving access to our open spaces

Funding

- Most of the funding is from the Precept
- Using earmarked reserves, the cost can be spread over several years

Improving access to our open spaces

- Community Empowerment Fund B&NES Council
- In 2018 the parish council was successful in their bid for funds to purchase and install equality compliant gates receiving £3,230
- The parish council matched this with £3,627.23 of CIL money

Improving access to our open spaces

Funding

- Quartet awarded a donation towards the cost of the Jubilee Garden

Improving access to our open spaces

Donations

- A resident made generous donations to the parish council towards development of a memorial garden at Ashgrove Cemetery
- Some of the seats in Ashgrove Cemetery and Recreation Ground have been donated by past and present residents in memory of loved ones

Improving access to our open spaces

The parish council has:

- Installed seats around the village
- Installed Equality Compliant Gates at the entrances to open spaces
- New path network on the recreation ground
- Provided a Dog safe area on Beacon Field
- building "A Jubilee Garden" on Beacon Field

Improving access to our open spaces

- Developed Ecewiche Green
- Improved play equipment
- Built a skate park
- Installed a MUGA
- Developed a Memorial Garden and enhanced the parish cemetery
- Built raised beds and a soil toilet at the allotments

Peasedown, Stowborough and Knightstone

From small beginnings



Red Post

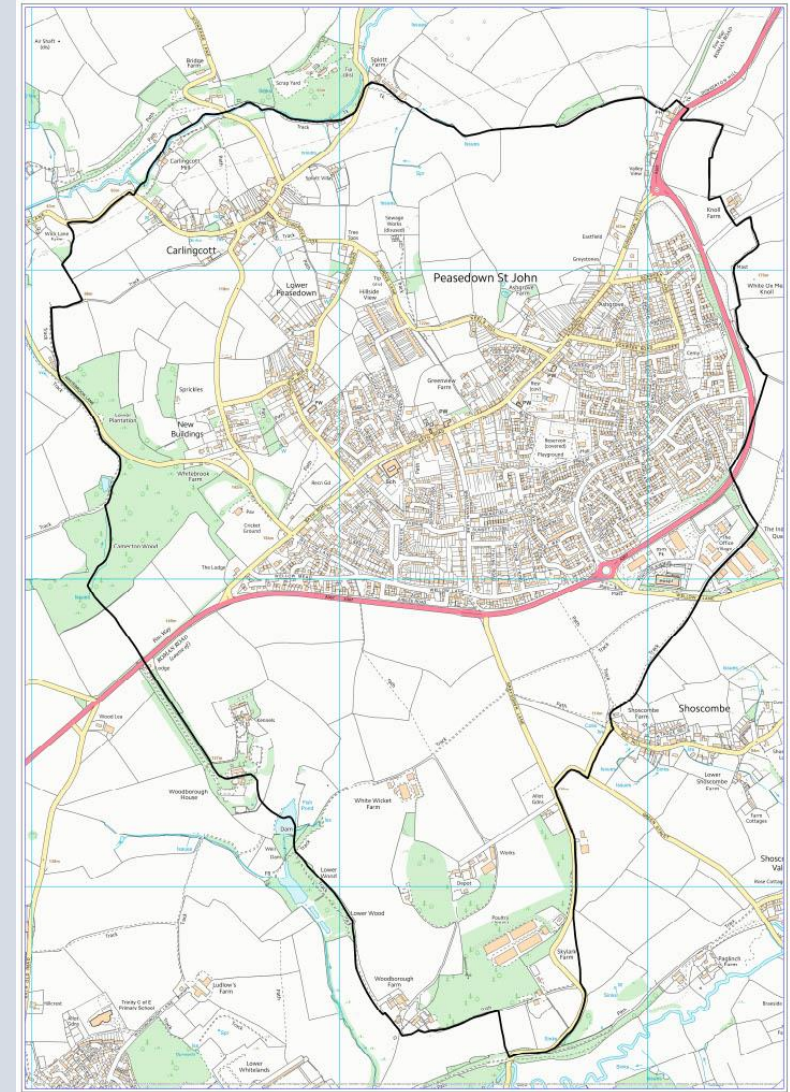


Peasedown St John Parish Council

- From small beginnings the parish council now in its 67th year has served the parish well
- None of these achievements could have been realised without determination and hard work by staff and councillors

Peasedown St John a civil parish

Peasedown St John a thriving parish



Peasedown St John Parish Council

Parish councils:

- are the first layer of local government
- can raise funds from the precept
- currently are not subject to restrictions when setting the precept

Peasedown St John Parish Council

Vibrant Parish councils

- Parish councils can deliver change and benefits for their residents
- Parish councils can set a precept collected by the unitary authority

The End

