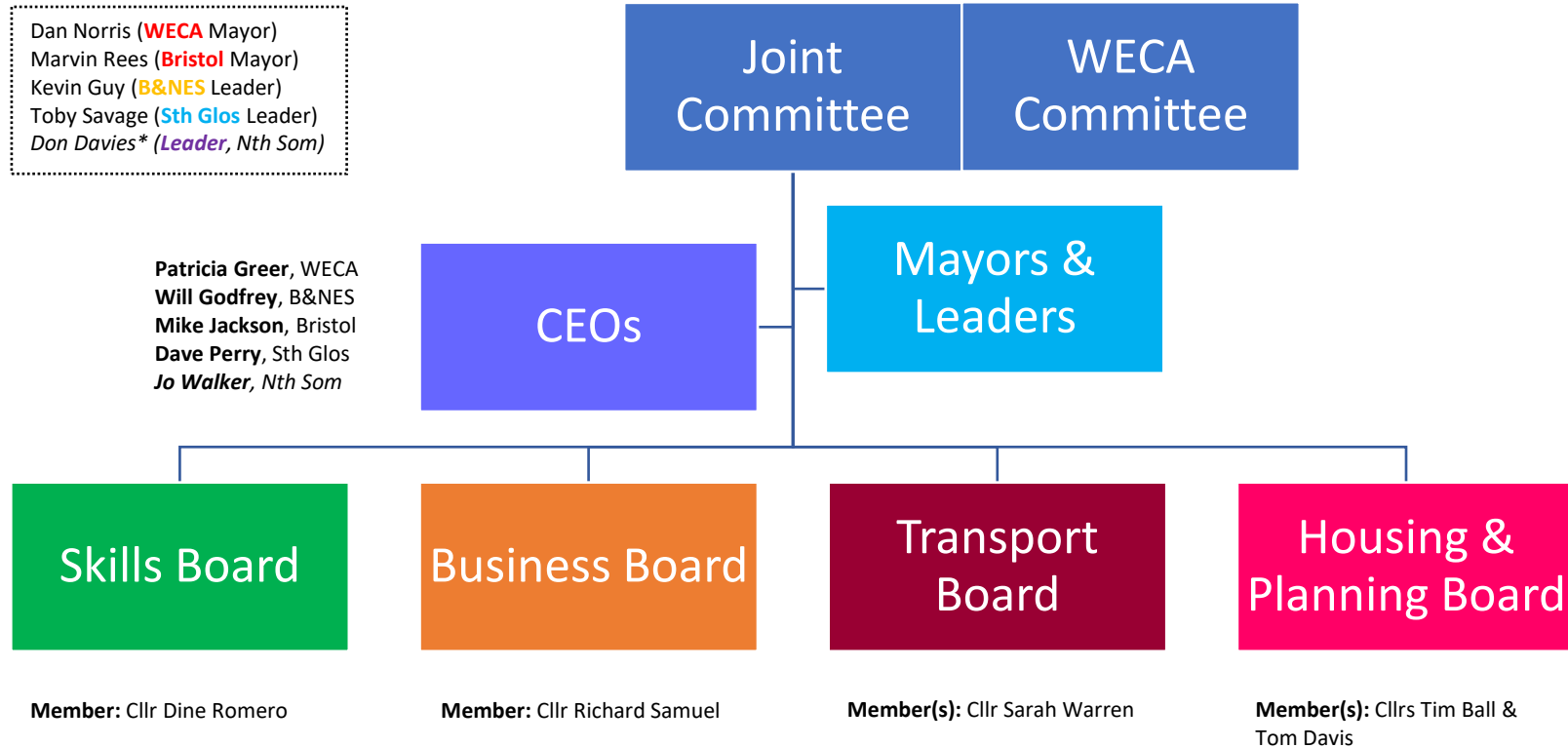

**Bath & North East
Somerset Council**

Improving People's Lives

**Parish Liaison Discussion
Consultation and WECA**

WECA Committees & Boards



WECA Committee

Mayor Dan Norris
West of England
Combined Authority



Cllr Kevin Guy
Leader, Bath & North East
Somerset Council



Cllr Toby Savage
Leader, South
Gloucestershire Council



Mayor Marvin Rees
Bristol City Council



Richard Bonner
Chair, WoE LEP



The Combined Authority is chaired by the Regional Mayor, Dan Norris, and is made up of the leaders and Mayor from the three councils in the region – Bath & North East Somerset Cllr Kevin Guy), Bristol City Council (Mayor Marvin Rees) and South Gloucestershire Council (Leader, Cllr Toby Savage).

The Chair of the West of England Local Enterprise Partnership (LEP), Richard Bonner, also attends committee meetings.

WECA & Joint Committee Meetings 21/22

15/10/21

28/01/22

08/04/22

WoE LEP Board Meetings 21/22

06/10/21

19/01/22

30/03/22

WECA Core Strategic Functions

The West of England Combined Authority objectives:

- Contribute to providing strong collective leadership and strategic direction to realise the full economic potential of the West of England.
- Support the development and delivery of key strategies to improve the economic conditions across the West of England area.
- Contribute to the formulation and expression of joint views (of the West of England Mayor and the local authorities) to central government and other bodies and organisations in respect of legislation, proposed legislation and other matters of concern, interest or relevance to the West of England economy with a particular focus on removing barriers to growth and the delegation of additional powers and funding.
- Actively support the co-ordination of joint local authority activity across the West of England, including the activities of the Local Enterprise Partnership Business Board.
- Work with appropriate agencies and bodies both within and beyond the West of England in order to achieve any shared economic objectives.
- Ensuring arrangements are in place to report the proposals and activities of the Combined Authority to the constituent councils.
- Take any decisions required to deliver the West of England Devolution Deal(s) and the relevant Strategic Plans including additional funding, freedoms and flexibilities.
- Provide a formal and accountable forum for decision making relating to all relevant West of England Combined Authority functions.

WECA Core Strategic Functions

- Transport
- Planning and Housing
- Skills
- Employment
- Finance

Transport Functions

The West of England Mayoral functions:

- Devolved and consolidated local transport budget (including maintenance funding)
- Identify a Key Route Network
- Prepare a Local Transport Plan including:
 - Strategic infrastructure delivery plan
 - Bus strategy; including all quality partnership arrangements and Bus Services Bill Powers, for example franchising
 - Key Route Network (management and maintenance principles)

The West of England Combined Authority functions:

- Power to deliver Grants to the UAs for the exercise of highway functions.
- Integrated Transport Authority (ITA) powers:
 - Concessionary fares
 - Provision of local bus information
 - Community Transport
- MoU with Highways England and Network Rail

The West of England Mayoral functions: (with consent from the constituent Authority)

- Designation of a non charging Clean Air Zone

West of England Combined Authority and Unitary Authority Joint functions:

- Subsidised services - Socially necessary bus services

City Region Sustainable Transport Settlement (CRSTS) Programme (1) – Transport Corridors

- Bristol to Bath (A4)
- Somer Valley to Bristol and Bath (A37 and A367)
- Bath City Centre bus priority, walking and cycling





CRSTS Programme (2) - Walking and Cycling

Bath & North East
Somerset Council

Improving People's Lives

Lots of community connections along the corridors

Plus priority schemes from the Local Cycling Walking Infrastructure Plan:

- Bath Scholars Way
- Bath Lower Weston to Oldfield School
- Bath Fieldings Bridge
- Bristol to Bath Railway Path
- Midsomer Norton Silver Street/Fosseway

Planning & Housing Functions

The West of England Mayoral functions:

- Combined Authority (Mayoral) Spatial Plan (from May 2018)
- Strategic planning powers:
 - Power to 'call-in' cross boundary, linear infrastructure (as identified in the Combined Authority (Mayoral) Spatial Strategy) planning applications;
 - Compulsory purchase powers (CPO) (with consent from the constituent Authority)
 - Power to create Mayoral Development Corporations (with consent from the constituent Authority).

The West of England Combined Authority functions:

- Promote the establishment of a Joint Assets Board for the West of England

WECA Overview & Scrutiny Committee

The Overview and Scrutiny Committee shall have the power to:

1. Review or scrutinise decisions made, or other actions taken, in connection with the discharge of any functions which are the responsibility of the Combined Authority or the Joint Committee;
2. Provide advice and challenge on policy and programme delivery to help ensure the region meets its climate commitments, including monitoring the delivery of the authority's Climate Emergency Action Plan.
3. Make reports or recommendations to the Combined Authority or the Joint Committee (as appropriate) on matters that affect the Combined Authority area or the inhabitants of the area;
4. Make reports or recommendations to the Combined Authority or the Joint Committee (as appropriate) with respect to the discharge of any functions which are the responsibility of the Combined Authority or the Joint Committee;
5. In so far as the business of the Local Enterprise Partnership Business Board (LEP) relates to the discharge of functions of the Combined Authority or the Joint Committee, the Overview and Scrutiny Committee shall have the power to scrutinise the LEP as set out in 1.– 3. above.