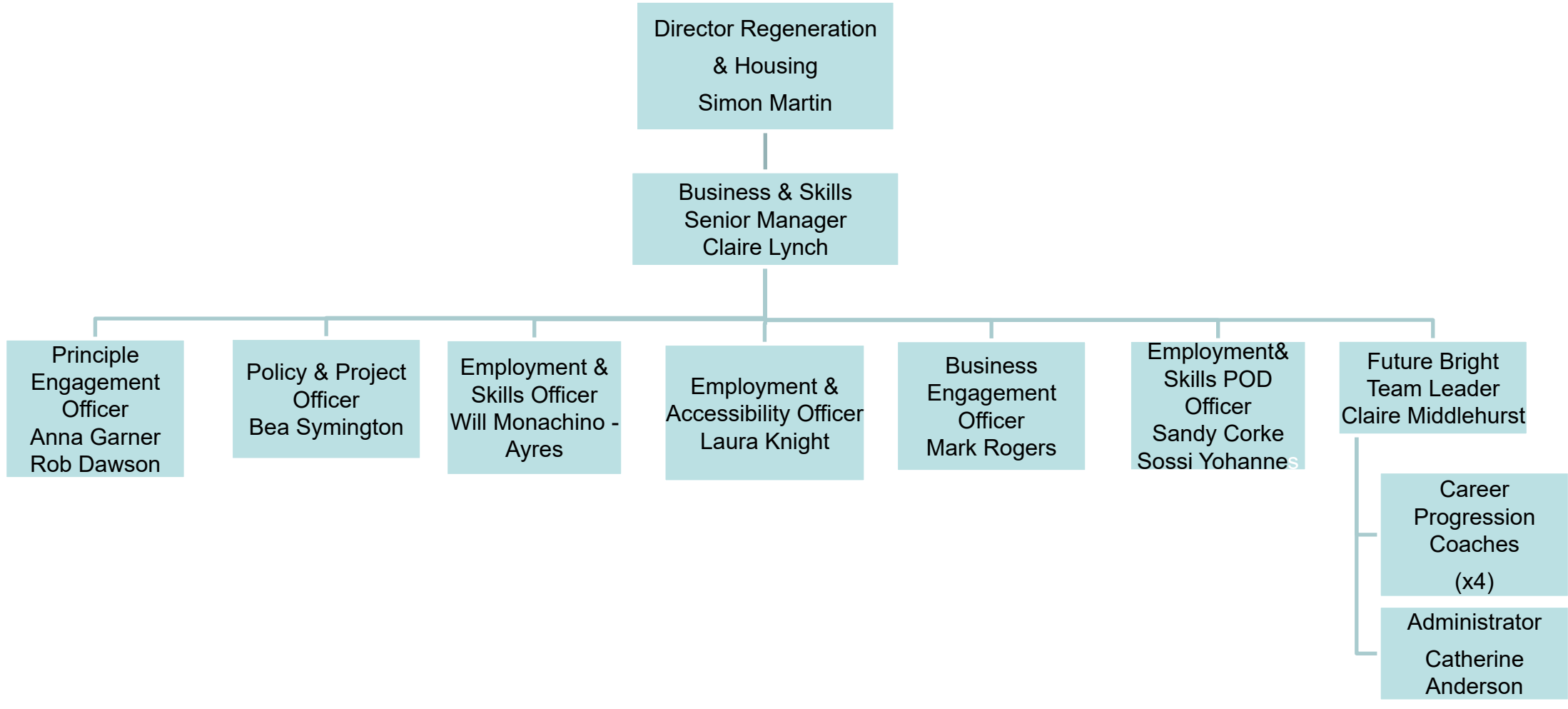

**Bath & North East
Somerset Council**

Improving People's Lives

Business and Skills Team

Business and Skills Team Structure



Business and Skills Team Functions



Main point of contact for co-ordinating support services to local businesses and residents

Support available via our Invest in B&NES and Achieve in B&NES



We share specific information about targeted business support, financial assistance and skill support programmes



Our core function is to deliver sustainable, inclusive growth. Enabling residents and businesses to meet their full economic potential in our district



Inward investment and business retention, offering tailored services to support those businesses wishing to relocate or expand their businesses within our area. (IBB and Bath Unlimited)



Coordinate and produce an Economic Strategy and Employment and Skills Plan.

Inward Investment & Retention

In North East Somerset

- » Appears to be a steady stream of smaller and start up retail – local high streets have been resilient
- » We have number of enquiries for smaller industrial in Midsomer Norton / wider Somer Valley area.
- » Willmotts moving into the old Dickies building – bringing jobs and training centre
- » Bridges supported with planning application in Westfield Industrial Estate
- » A new planning app for 8 industrial units in Clutton, supporting other developers with plans for new workspace.
- » A few agricultural enquiries for land for a smallholding or farm based wellness/ mental health projects

In Bath

- » Vulnerability to US investors in key companies during the pandemic, with 2 great companies closing Wild and Wolf (product design) 90 jobs and Funko Animations (animation and product design) 90 jobs
- » However, office take-up in 2020 was resilient even during the lockdowns.
- » Current office vacancy rate are higher and lease signings are down so far this year, but we have good protection for offices due to the World Heritage Site exemption to Permitted Development Rights

B&NES Landscape today

1

B&NES being a prosperous area (with two amazing universities and FE Campus). However it has a number of underlying skills and employment issues.

2

B&NES suffers from an hourglass economy – high skilled highly paid roles and lower paid roles with little progression routes

3

High level of employment within finance, legal, education but equally a high level of employment and low pay in the care; hospitality and accommodation sectors.

Economic Strategy Approach

Address key challenges identified by One Shared Vision, the Local Industrial Strategy and West of England Recovery Plan in order to align with future funding streams

Draw on the ambitions of the One Shared Vision Plan and Zero carbon approach, committing to strong and sustainable growth across the authority area

Partnership approach to delivery, governance and ownership drawing in community and key anchor institutions. Aim to be aspirational and visionary, rather than purely an action plan.

Spatial element – sets the strategic case for different economic interventions in different areas of B&NES. This will feed into the new Local Plan and Economic Recovery & Implementation Plans.

Economic Strategy Challenge Questions

C
O
V
I
D
-
1
9

Shape of economy

Digital Inclusion and Infrastructure

Aging Population

Low levels of industrial stock

Sustainability and the zero-carbon approach

To be addressed in the Economic Recovery & Implementation Plan

Pockets of severe deprivation and inequalities across a range of indicators

Spatial Disparities

Key Priorities for Businesses and Skills



Skills Projects

We Work for Everyone	Realising Talent & Extension pilot	Kickstart
Future Bright	Employment and Skills Pod	Achieve website
Pathways Booklet	CIAG funding with WECA, YC and 3 Special Schools	3D Academy
Networks	Reboot phase II	Women's Work Lab
Thrive at Work	iStart	WECA Grants

Work with West of England Combined Authority

- Securing UK Community Renewal Fund projects for B&NES including B&NES Social Enterprise Programme
- Promoting WECA projects to B&NES businesses, including Green Business Grants, Peer Networks, Creative Scale-up programme, all of which have had take up from both North East Somerset and Bath businesses
- Attending weekly Economic Development meetings to lobby for B&NES and Skills Officer groups
- Skills funding and delivery
- Events – Netflix and Skill Summit

Project & Programme Delivery & Successes

- Future Bright – 81 residents supported – 16% increased wages, 45% into training (supported an additional 114 who weren't eligible by 1:2:1 and sign posting)
- UBS – 2020-2022 Business/pre start up 473, Light touch 3,181, New business stats 43, Total jobs 72
- TR&T s106 – Planning & Procurement, 20 WE placements over the year. 80 lined up from Jan
- Last 18 Months with grants and enquiries we supported 000's of Businesses
- Aftercare for businesses/Survey
- Womens Work Lab – FSF
- Employment and Skills Pod - FSF
- 3D Academy – Hobs/College
- Kickstart – Gateway
- CEIAG – Supporting SEN progression routes and parents
- Disability Confident Employers
- Green Skills Academy - Modern Methods
- Care Academy with Bath College, Skills for Care
- Key Cities
- Skills Board, Both Uni's and Bath College