



B&NES
Tree & Woodland Delivery Plan

Background

- Climate and Ecological Emergency declared 2019
- Target of carbon neutrality by 2030
- High stated ambition to plant 100k trees by May 23, demonstrating political leadership and need to work in partnership to deliver (equates to circa 45ha)
- Council to create *“A detailed Tree and Woodland Plan showing where trees will deliver most benefit and how the planting and future management will be resourced in partnership with communities, volunteers and landowners”*
- Council has agreed to West England Nature Partnership (WENP) ambition to double woodland cover and urban tree canopy cover across the region by 2060, *which is in line with*
- the Forest of Avon Plan, A Tree and Woodland Strategy for the West of England (includes to double semi-natural tree and woodland cover in the WoE by 2050)

Key Objectives

- For Trees to provide carbon capture and ecological enhancement - and other benefits for people and the environment where possible
- To work within regional strategic aims (i.e WENP Nature Recovery Networks & Forest of Avon Plan actions)
- Be a live, rolling document with annually renewed actions
- To create better baseline data re trees, land, funding, issues
 - Appraised tree cover
 - Reviewed publicly accessible land
 - Created Woodland Opportunity Mapping to identify private opportunity
 - Reviewed funding stream (grants, donations, adoptions)
 - Asked those planting trees for details of what would assist them

Baseline tree data

Ethos identified:

- Total woodland cover (>0.5Ha) is 2892Ha = 8.25% of B&NES area (lower than England average @ 10%)
- Total tree canopy cover (woodland >0.5Ha + everything else) is 5937Ha = 16.5% of B&NES area (higher than England average @ 16%)
- Bath city has an average tree canopy cover of 22% (above Southwest average @ 11%)
- Trees in B&NES sequester approximately 52,008 tonnes of CO₂ p/a and currently store 456,258 tonnes of carbon

Appraisal of Publicly Accessible Land

Council owned and third party land audited

- Identified maximum potential for planting (areas over 0.1ha)
- Includes Parks & Open Spaces, Sports areas, land within Housing, school land & land in relatively short term lease.
- 392 potential sites located & checked for potential
- Social Housing = 115
- School = 68 sites
- Council owned land accounts for 209 sites
- Highway footpaths and verges over 1.8m
- Overall found 19.49ha (43852trees) + 3222 stds = 47074

NOTE* Less than 50% of the land is immediately available to us (in third party ownership or leased/allocated to other uses)

i.d	includes	Ha	Stds	total no.
Schools	Academies Sch Primary Sch Secondary Sch	2.23	475	5492
Parks and Bereavement	Cemetery, CBG Leisure, Open space Parks and Gdns, Play Field, Play Area	10.14	270	23085
Corporate	Car Park, Children Centre, Community Centre, Depot, EPH, Land, Misc, Residential	5.86	629	13814
Social Housing		1.26	1148	3983
Highways			700	700
	totals ha	19.49		
	totals trees			47074

Private Tree Planting

Issues and Opportunities — results of Ethos Consultation

Stakeholders we consulted said issues were:

- Available of land for planting and knowing where best to look
- Grant confusion – many and complex
- Need for help and advice
- Ongoing maintenance

Opportunities were:

- Plenty of money from array of grants for tree planting and some for establishment
- Willing groups and organisations wanting to plant trees

We commissioned Woodland Opportunity Mapping

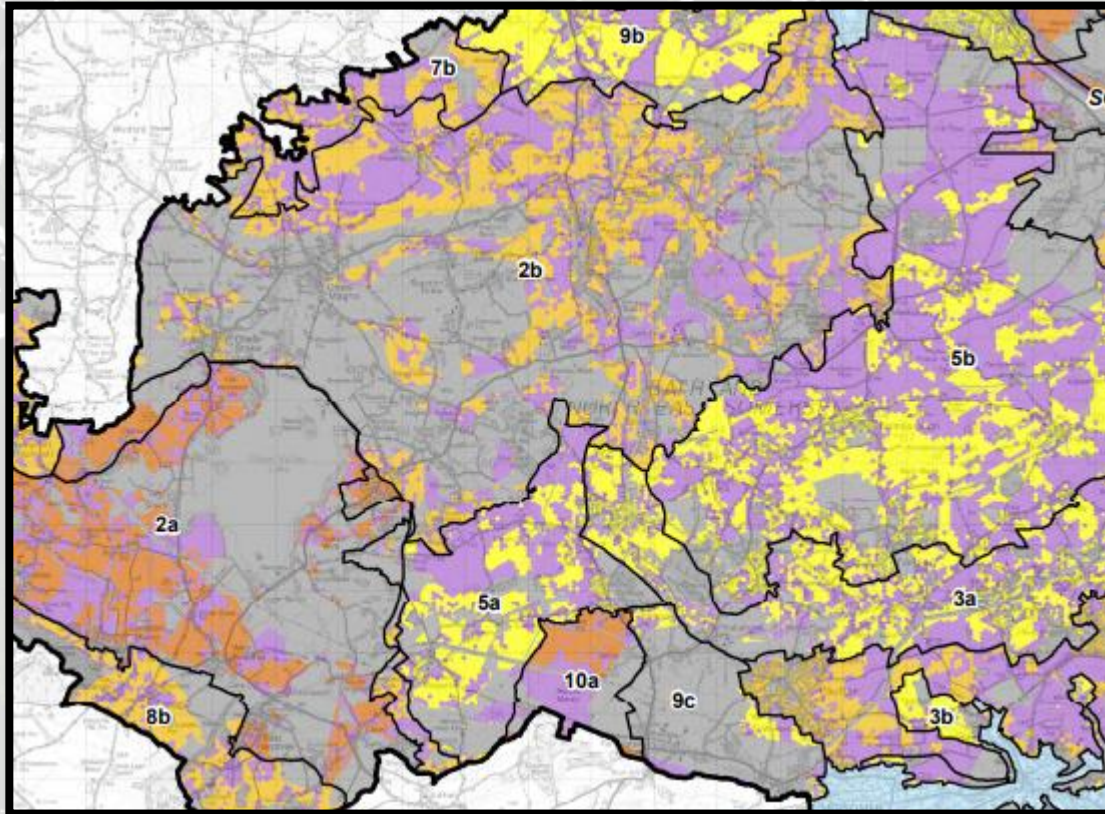


Figure X.14: Landscape sensitivity of opportunity areas for medium scale woodland planting and productive agricultural land

- Bath and North East Somerset
- Urban area (not assessed)
- Landscape Character Area
- Constrained land that is unsuitable for medium scale woodland planting
- Opportunity areas for medium scale woodland planting but which is in use as productive agricultural land*

Landscape sensitivity of opportunity areas for medium scale woodland planting

- Low
- Low - Moderate
- Moderate
- Moderate - High
- High

Woodland types and areas:

- Small: less than 5ha
- Small-medium: 5 to 15ha
- Medium: 15 to 30ha
- Large: above 30ha

- Opportunity Mapping offers guidance to where woodland will not be detrimental to the different Landscape Character Areas throughout B&NES

How do we get to 100,000 trees?

	19-21	location	21-22	location	22-23	location	
	11061	Parks & o/s	3391	Parks and o/s	13207	Parks and o/s	
	7647	Private	2000	School Planting Project	4000	School planting project	
			10000	Tree giveaway	10000	Tree giveaway	
			200	Social housing	500	Social housing	
			6000	Private	6000	Private	
			13000	FoA (private)	13000	FoA (private)	
totals	18708		34591		46707		100006

Delivery Plan Actions

- Complete B&NES tree planting actions 21-22 (funded by FoA)
- Launch 'One Tree Per Child' – planting & education
- Create B&NES 'Virtual Forest' site – record the trees planted (community call-to-action)
- Continue Tree giveaways
- Create B&NES tree planting webpage – improve guidance on grants, attract donations (Replant B&NES site), Woodland Opportunity Mapping
- Support Queens Green Canopy (QGC) – schools/parishes
- Continue to cross reference actions to FoA plan

Monitoring

- We will aim to monitor increase in woodland cover and overall tree canopy in B&NES using:
 - Aerial Photography Great Britain (APGB) 3 year cycle (£1750+vat)
 - B&NES Virtual Forest Map via ESRI (£1800 build + £762 to run p/a)
 - Through contact with partners
- We will monitor
 - own tree establishment/failures (limited Arb resource)
 - carbon capture using i-Tree Eco & APGB
 - other nature-based solutions (i-Tree Eco/Air Quality in AQMA's)
 - success of tree adoption site and voluntary donations
- Annual & 5 year review and renewal of the plan