

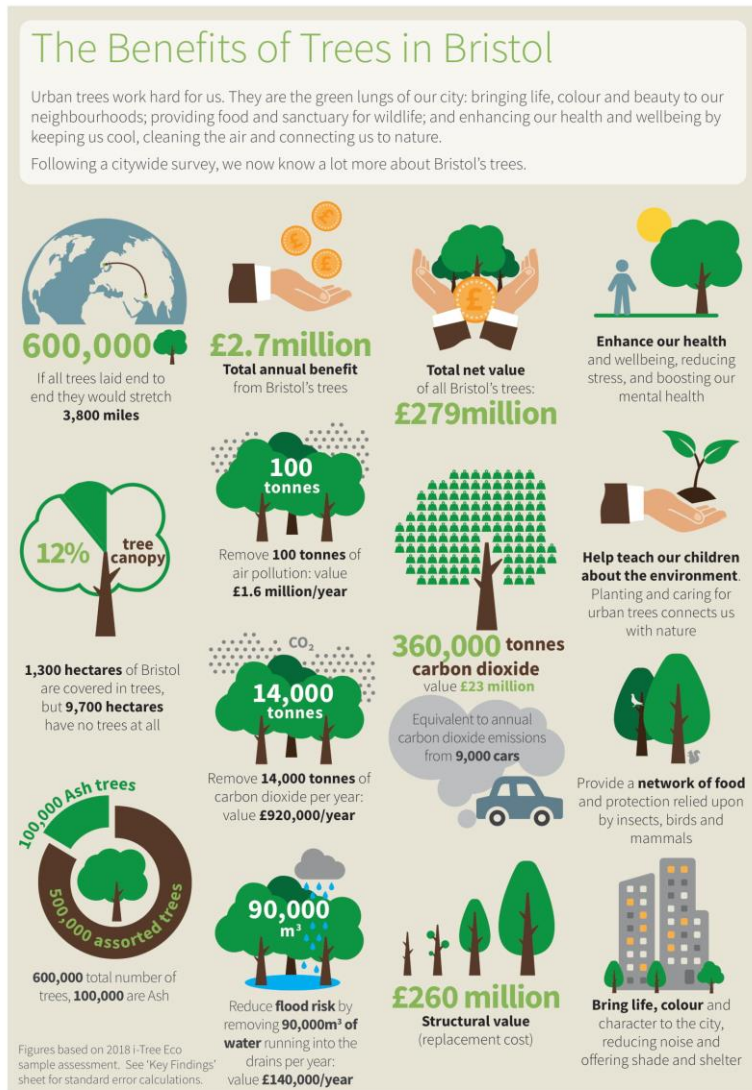
The Forest of Avon

Transforming and accelerating action
for our local trees and woodlands



England's
Community
Forests

Why do we need to care about our trees?



- Doubling tree cover in the West of England will bring an estimated £540 mn of benefits through carbon and air pollution. It will pay for itself over and over again.
- Trees are essential for so many areas of our life and for so many species to thrive, uniquely.
- We are living at a time when humans collectively have an immense ability, resource and opportunity to determine the natural environment and consequences – planting trees is one of those abilities – to increase our woodlands and simply allowing nature to bring all of the benefits it does, once we take those initial steps.

National and regional targets

- Topline target of doubling tree cover by 2050 and many other goals, covering the wide range of needs for the Forest of Avon, our trees and woodlands.
- This includes managing and preserving existing woodlands, meeting the widescale challenge of ash dieback and enabling all communities throughout the region to care for and enjoy their local trees.
- **Regional and each of the 4 authority area targets for net zero carbon emissions**
- **National net zero emissions target for 2050, Environment Bill upcoming, England Trees Action Plan released, 30,000 ha per year planting target**
- **Quality of life indicators**
- **Clean growth – jobs, skills, housing developments – healthy, happy communities where people want to live, work and visit!**

What is the Forest of Avon Trust?

- Bringing trees to people and people to trees!
- Your Community Forest – There are 11 across England and there will be more!
- Working nationally and locally, the best of both worlds – working with England's Community Forests, in partnership with the Forestry Commission/Woodland Trust and many others. Running large and smaller scale programmes and funding.
- Trees for Learning – Defra funded
- Trees for Climate – Defra funded and greatly supported

What is the Forest of Avon Plan?

- A Tree and Woodland Strategy for the West of England
- An opportunity to resolve long standing barriers to consistent high quality woodland management, tree care and tree planting
- An opportunity to engage everyone in our work with partners, authorities, local groups
- Sets out Priorities for your area, Principles for how to take action, Resources available and why we need to act now

What is the 'Trees for Climate' fund?

- An innovative new fund, now in Year 2, for a whole range of tree and woodland planting and establishment
- National programme of Englands Community Forests but locally delivered working closely with you to meet your needs
- Bespoke support suited to your needs – with up to 100% of costs payable and future maintenance costs
- We can support you to a high degree or to a lesser degree, as you need. The application process is an application form with some evidence needed which we will support you through.

What can we potentially fund?

- Planning and project management
- Exploratory checks, surveys and reports
- Supplies and equipment e.g. trees, treeguards, fencing, mulch mats
- Public access, signage and interpretation
- Site infrastructure – access, egress, seating, structures
- Community engagement activity and communications
- Flood management interventions
- Establishment period and maintenance costs



Good things happen when we work together... 1,500 trees have been planted on the Bath skyline, thanks to the hard work of Bath & North East Somerset Council, funding from the Forest of Avon Trust and the help of Grow for Life – a charity engaging local people to build life skills. The local community pulled together to plant the trees and will enjoy seeing them grow for years to come.

How can you make the most of all of this?

1. Get in touch with our team

- Anna – Bath and North East Somerset and North Somerset
- Jack – Bristol and South Gloucestershire

0117 963 3383

- With potential for up to 5 miles outside of the boundary ‘the halo!’

2. Tell everyone about the opportunity to plant their own trees!

Landowners, community groups, businesses, schools, churches...

Trees for Climate

Proposed scheme design criteria & reporting standards

Type of planting	Design criteria			Measurement unit	Reporting standard
	Stocking density & species	Open space & layout	Typical planting stock & protection		
Multi-purpose woodland (≥5.0ha)	<ul style="list-style-type: none"> ✓ Minimum of 1,600 trees per hectare; ✓ No single species to be more than 70%; ✓ Up to 25% woody shrubs; 	<ul style="list-style-type: none"> ✓ Up to 40% open space as part of good design for specific biodiversity and recreation objectives); ✓ Management prescription required for open space; ✓ Minimum 20m width; 	<ul style="list-style-type: none"> ✓ Seedlings/forest transplants/whips/cell grown; ✓ Establishment by natural colonisation (incl. assisted) acceptable – see separate planting type for details; ✓ Protection as appropriate; 	Hectares	Gross area of woodland to be reported, including up to the 40% open space within the woodland design.
Small-scale tree planting (0.5 – 4.99ha)	<ul style="list-style-type: none"> ✓ Minimum of 1100 trees per hectare; ✓ No single species to be more than 70%; ✓ Up to 25% woody shrubs; 	<ul style="list-style-type: none"> ✓ Typically 20% open space used for perimeter buffer habitat, but can be up to 40% in exceptional circumstances where woodland rides & glades integral to good design; ✓ Management prescription required for open space; ✓ Minimum 20m width; 	<ul style="list-style-type: none"> ✓ Forest transplants/whips/cell grown; ✓ Establishment by natural colonisation (incl. assisted) acceptable – see separate planting type for details; ✓ Protection as appropriate; 	Hectares	Gross area of tree planting to be reported, including up to the 40% open space within the woodland design or up to 20% buffer of open space habitat beyond net area of actual tree planting. Default open space buffer to be 20%.
Natural colonisation (≥0.5ha)	<ul style="list-style-type: none"> ✓ Must achieve minimum of 60% woody cover and 100 trees per hectare within 10 years¹; ✓ Supplementary planting may be required, before or at Year 10; 	<ul style="list-style-type: none"> ✓ Open space permitted, referencing criteria for equivalent ‘planted’ approach based on scheme size; ✓ Management prescription required for open space; ✓ Minimum 20m width; 	<ul style="list-style-type: none"> ✓ Viable seed source for ≥ 2 tree species required within 75m; ✓ Appropriate ground preparation required to facilitate germination; ✓ Grazing pressure must be removed by effectively excluding deer/livestock; ✓ Assisting natural colonisation via local seed collection and broadcasting is acceptable; 	Hectares	Gross area of woodland to be reported, including open space.

¹ Aligns to EWCO guidance: https://assets.publishing.service.gov.uk/government/uploads/system/uploads/attachment_data/file/992107/EWCO_Grant_Manual_-_Appendix_5_-_Natural_colonisation_guide_v1.0_June2021.pdf

Type of planting	Design criteria			Measurement unit	Reporting standard
	Stocking density & species	Open space & layout	Typical planting stock & protection		
Very small-scale tree planting (0.1 – 0.49ha)	<ul style="list-style-type: none"> ✓ Minimum of 1100 trees per hectare; ✓ Up to 20% woody shrubs; ✓ Fruit trees accepted as a component of woody shrubs; 	<ul style="list-style-type: none"> ✓ Up to 20% open space used to provide perimeter buffer habitat; ✓ Management prescription required for open space; 	<ul style="list-style-type: none"> ✓ Forest transplants/whips/cell grown; ✓ Protection as appropriate; 	Hectares	Gross area of tree planting to be reported, including 20% buffer area of open space habitat beyond net area of actual tree planting. Default open space buffer to be 20%.
Low density tree planting (incl. agroforestry)	<ul style="list-style-type: none"> ✓ Minimum of 25 trees per hectare; ✓ Widely spaced trees planted (singles, rows or groups) to achieve minimum final canopy cover of 20% across gross area planted; ✓ Species appropriate for objectives and location; 	<ul style="list-style-type: none"> ✓ No open space allowance; ✓ Encompasses street tree planting, urban greenspace planting, wood pasture/parkland creation, and agroforestry (silvoarable & silvopastoral) planting schemes; 	<ul style="list-style-type: none"> ✓ Forest transplants/whips/cell grown/feathered/standards; ✓ Individual tree protection, as appropriate; 	Hectares, based on assumed minimum 20% final canopy coverage ² (i.e. the area over which the 20% canopy cover will be achieved).	Gross area over which a minimum of 20% canopy cover will be achieved. Assumed typical mature canopy diameter of 10m.
Hedgerows	<ul style="list-style-type: none"> ✓ Minimum of 5 plants per linear metre; ✓ Double-staggered row planting pattern, or similar; ✓ At least 70% native and/or locally characteristic species; 	<ul style="list-style-type: none"> ✓ No open space, but requires minimum 1m herbaceous buffer each side along length of hedgerow; 	<ul style="list-style-type: none"> ✓ Seedlings/forest transplants/whips; ✓ Protection as appropriate; 	Length, converted to area in hectares	Length of hedgerow planted to be assumed to be 5m in width to convert to area in hectares.
Hedgerows with trees	<ul style="list-style-type: none"> ✓ Minimum of 5 plants per linear metre; 	<ul style="list-style-type: none"> ✓ No open space, but requires minimum 0.5m herbaceous buffer each 	<ul style="list-style-type: none"> ✓ Seedlings/forest transplants/whips/feathered ✓ Protection as appropriate; 	Length, converted to area in hectares	Length of hedgerow with trees planted to be assumed to be 10m in

² Based on FC NFI definition of woodland: <https://data.gov.uk/dataset/ae33371a-e4da-4178-a1df-350ccfcc6cee/national-forest-inventory-woodland-england-2015#:~:text=Summary%20The%20NFI%20definition%20of,than%2020%25%20of%20the%20ground.&text=The%20definition%20of%20an%20open,is%20completely%20surrounded%20by%20woodland>

Type of planting	Design criteria			Measurement unit	Reporting standard
	Stocking density & species	Open space & layout	Typical planting stock & protection		
	<ul style="list-style-type: none">✓ Double-staggered row planting pattern, or similar;✓ Trees planted within hedge at average spacing of every 15 metres;✓ At least 70% native and/or locally characteristic species	side along length of hedgerow			width to convert to area in hectares.

