

---

# Bath & North East Somerset Council

---

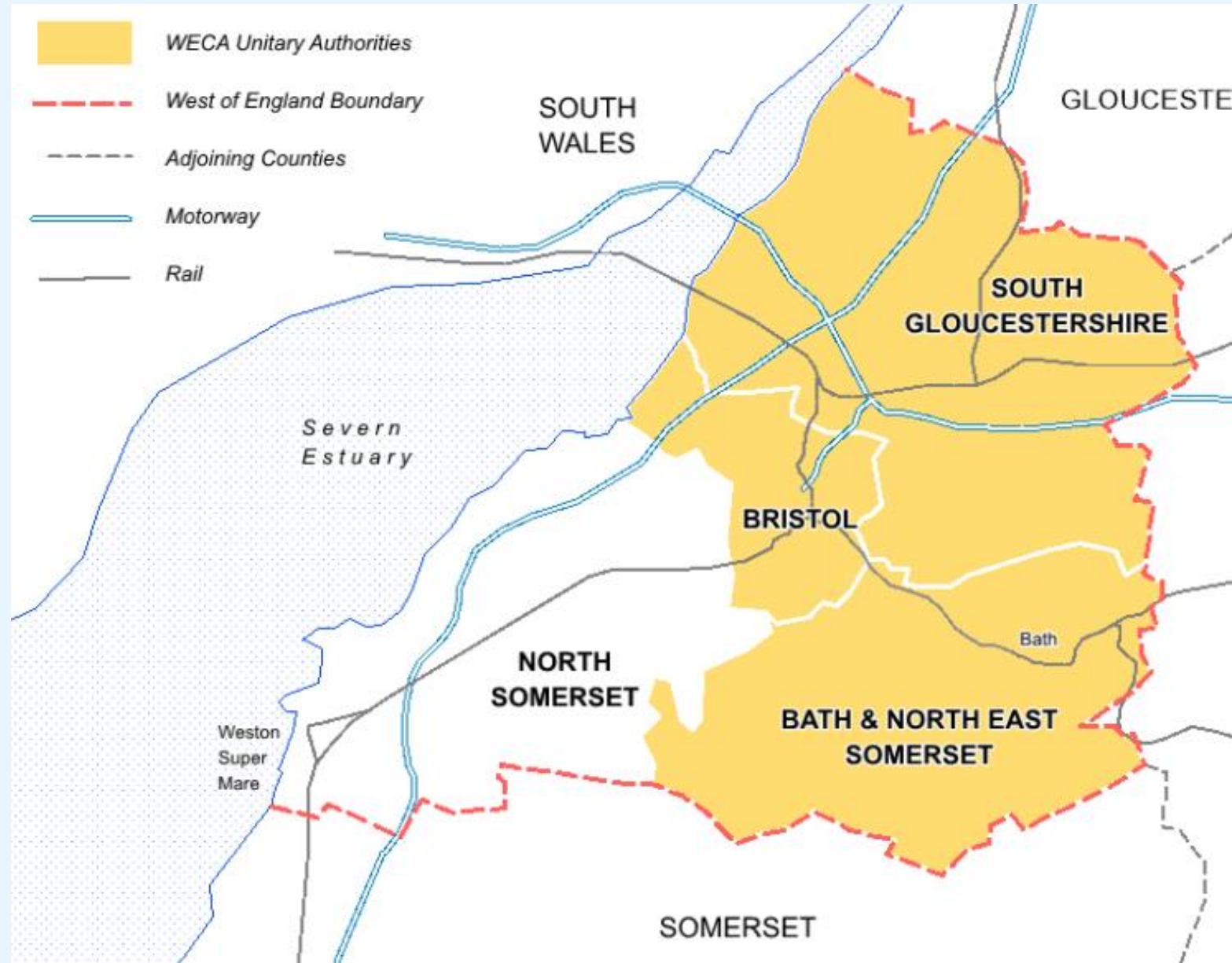
**Improving People's Lives**

Parish Liaison Meeting 24<sup>th</sup> March 2021

# WECA Sustainable Development Strategy

Bath & North East  
Somerset Council

Improving People's Lives



# SDS Scope

The SDS is a high level plan covering;

- Strategic **Vision & objectives**
- **Housing** – the overall requirement for WECA & each UA
- **Affordable Housing** – delivery expectations
- **Employment** –jobs/space requirements for WECA & each UA
- **Spatial strategy** including **key infrastructure** and **broad locations** for growth (with a **Key diagram** showing broad locations of growth)
- **Place-making principles/ Environment** – energy, nature, design, green infrastructure.

**Role of SDS vis UA Local Plans (and supporting evidence)**



# Timetables

## SDS

Informal  
engage &  
Evidence

Prepare SDS

Publish  
Draft for  
formal  
Consult'n

Submit  
For  
exam

Hearings

Insp.  
Report

Adopt  
(Publish)

B&NES New Local Plan

Evidence

Options

Draft

Submit

Local Plan Partial Update

Adoption

O N D  
2020

2021

2022

2023

BCC/WECA elections

UA elections

# New strategic evidence

- » Local **Housing** Needs Assessment (LHNA),
- » **Economic** Land & Need Supply Assessment (ELSNA)
- » **Transport** Appraisal Framework (TAF) (& new Transport Model)
- » **Carbon** Modelling Tool
- » Strategic Housing Land Availability Assessment (SHLAA)
- » **Renewable Energy** Resource Assessment Study (RERAS)
- » **Habitats** Regulation Assessment (HRA)
- » **Nature** Recovery Strategy
- » Results of Autumn 2020 **engagement**
- » Strategic **Viability** Assessment
- » Strategic **Green Belt** Assessment



# Local Housing Needs Assessment

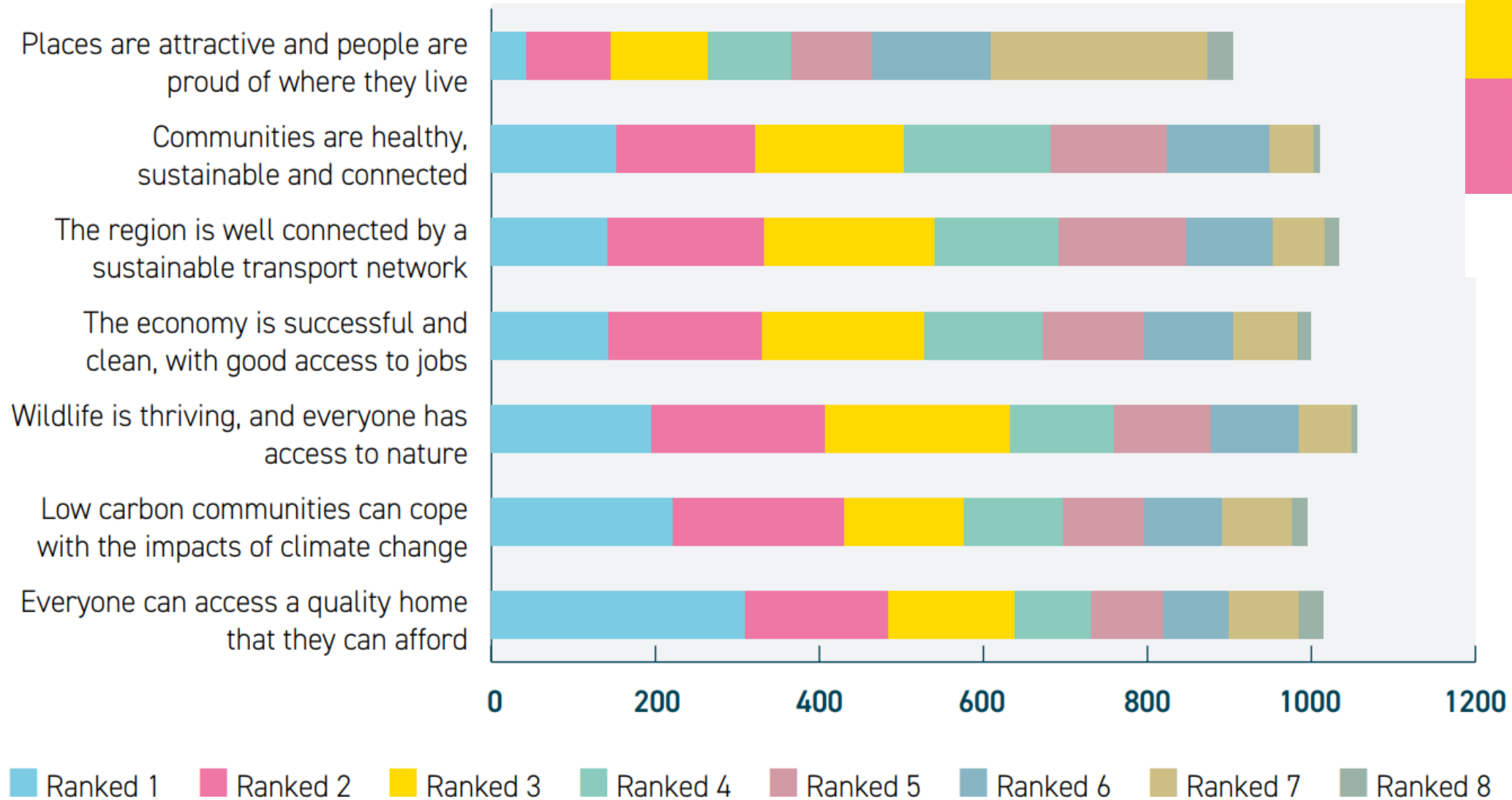
New Standard Methodology;

UA	Annual	20 years
B&NES	648	12,960
Bristol	3,196	63,920
South Glos	1,412	28,240
<b>TOTAL</b>	<b>5,256</b>	<b>105,120</b>

- Significantly higher figure than the JSP
- NPPG is contradictory as to how this should be applied in Combined Authorities



# SDS engagement – Views on priorities

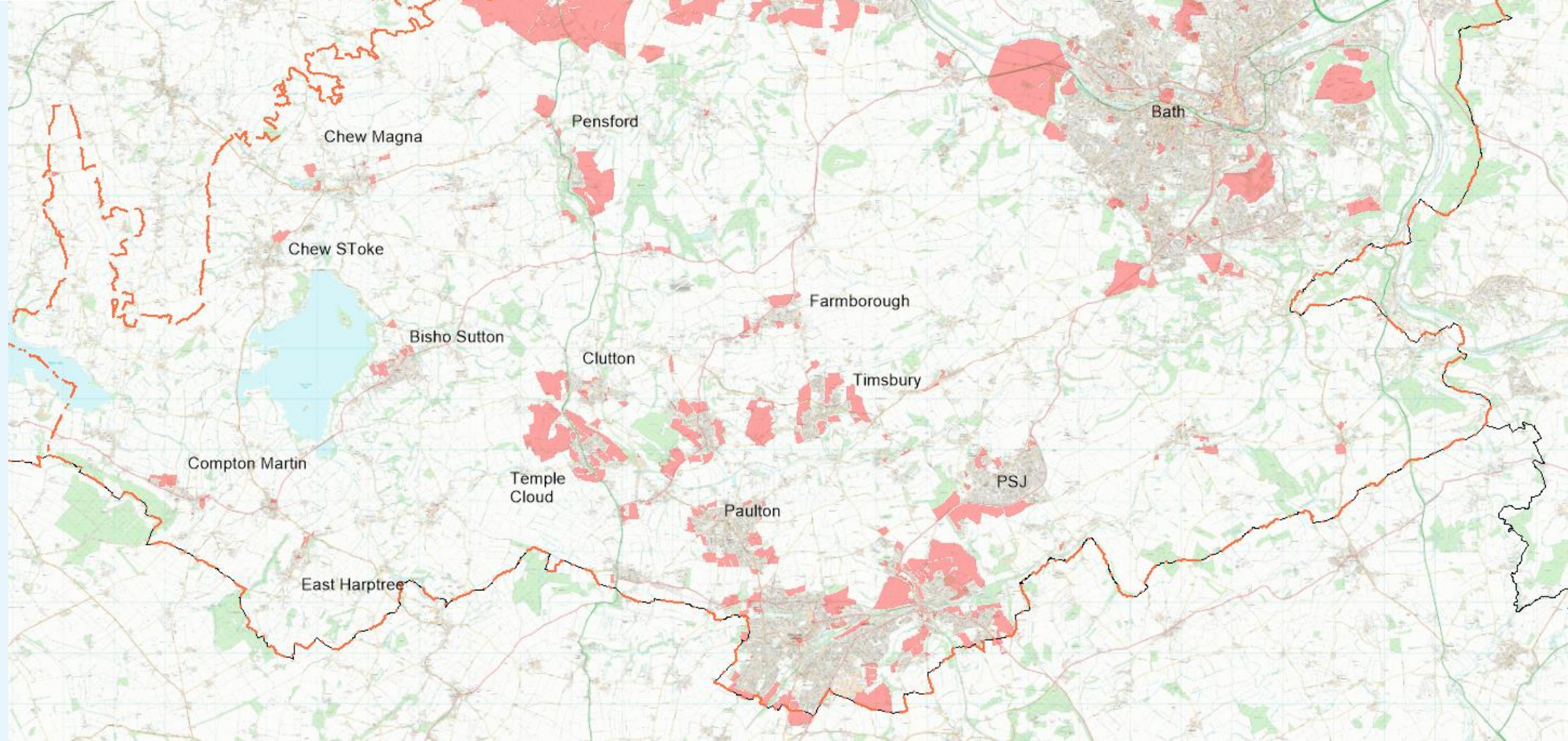




# SHLAA

## Call for sites

### 2020





# Local Plan Partial Update (LPPU)

## Rationale:

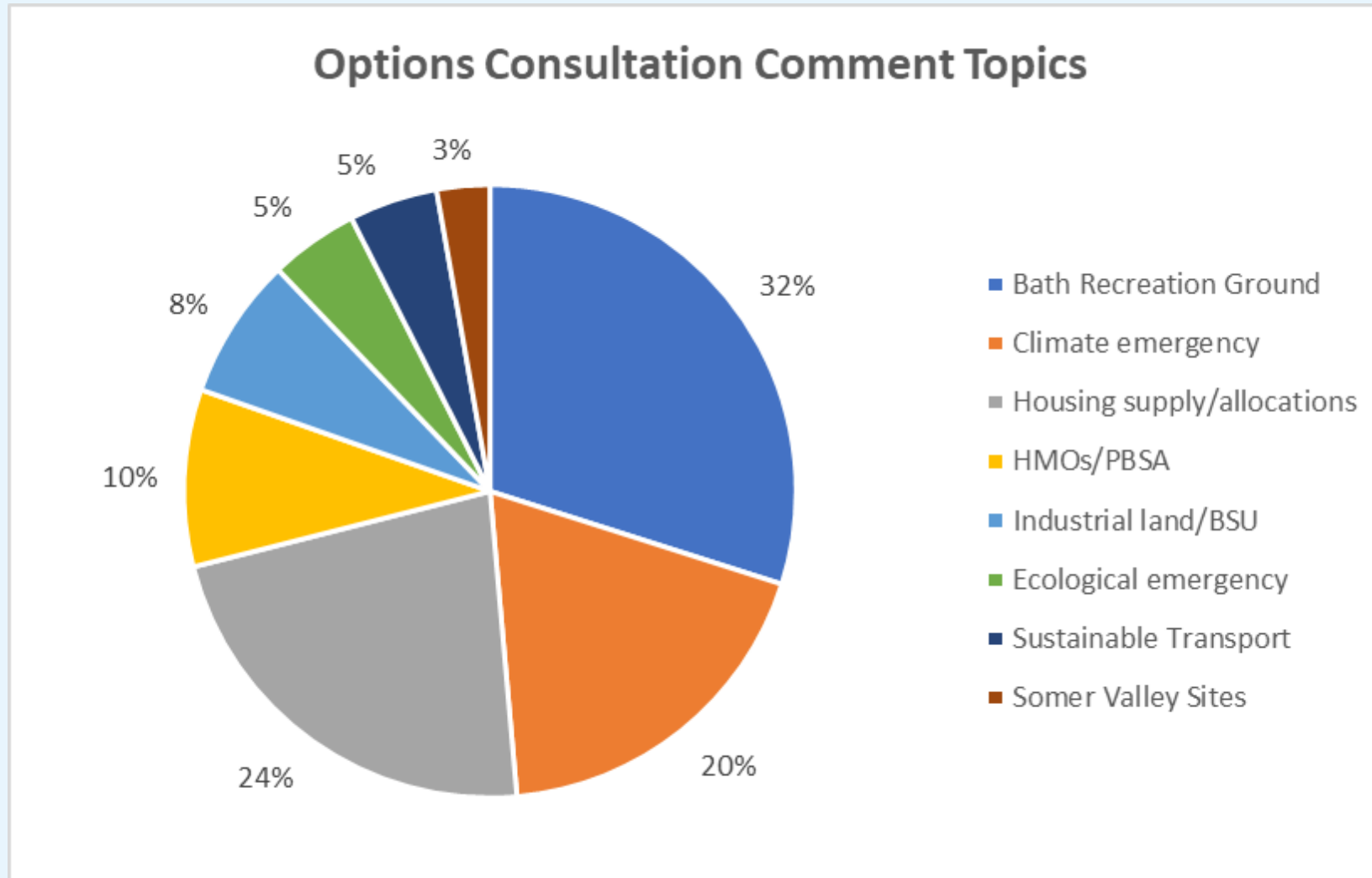
Address some urgent issues in B&NES quickly:

- *Climate & ecological emergencies*
- *Sustainable transport*
- *Housing supply*
- *Specific other local issues e.g. HMOs/Universities; economic/green recovery*
- *Reflect national policy changes*



# LPPU Options Consultation

Around 2,390 comments (1,500 standard reps on Bath Rugby & 200 on Whitchurch)



# Local Plan Partial Update

## Parishes – key issues:

- *Housing supply – consideration of potential allocations/HDB changes*
- *Review of sustainable transport policies & parking standards*
- *Renewable energy policies – ensure adequately consider landscape & other environmental impacts, especially of wind energy*
- *Approach to infill housing development in Green Belt villages*



# Local Plan Partial Update

## Next Steps

- Preparing Draft Plan for consultation in spring/summer
- Engagement with parish & town councils beforehand on key issues;
  - *Parking strategy/standards (SPD)*
  - *Housing supply – potential allocations (plus work with individual parishes)*
  - *Approach to infill housing in Green Belt villages*
- Opportunity to comment on Draft Plan

Proposing to brief/consult parishes on other related projects/guidance e.g.  
review of Sustainable Construction & Retrofitting SPD and landscape guidance

# Local Plan Partial Update

## Overall Timetable

