

Mental Health update

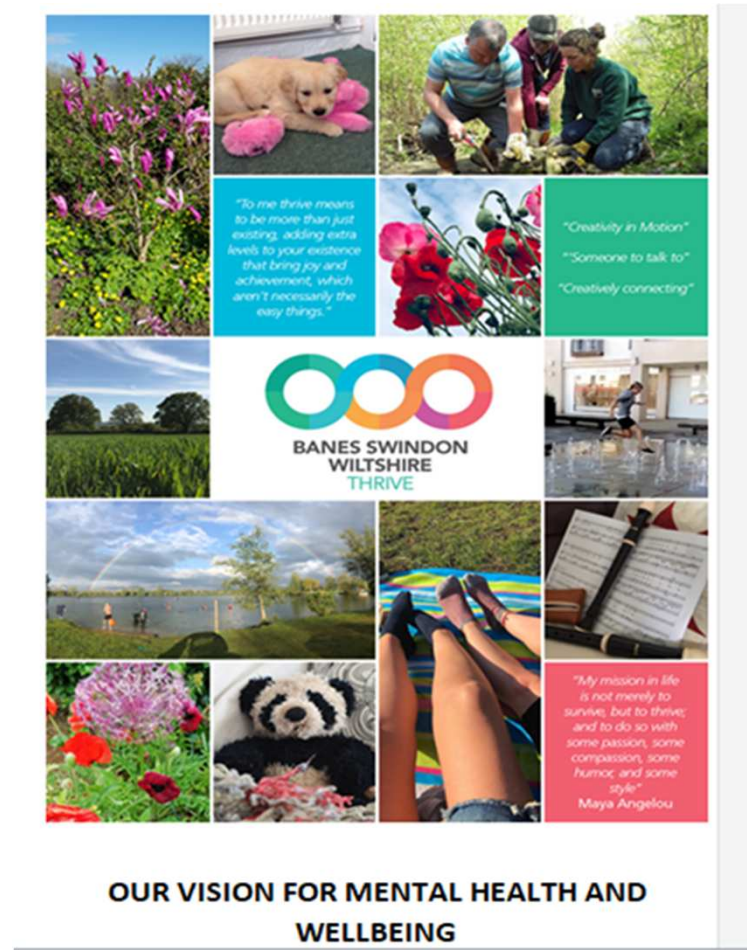
BaNES Health and Wellbeing Board
November 26th 2019

Strategic Journey So Far



- Builds on place based, local mental health plans and transformation
- Pre-engagement commenced last December with people with lived experience, their families and carers and our partners including NHS providers and third sector
- Co- production of all age draft BSW mental health strategy
- Anchored on co-creation events feedback and linked to aims and objectives of NHS Long Term Plan
- Engagement and socialisation of draft strategy

Draft Strategy Co-created



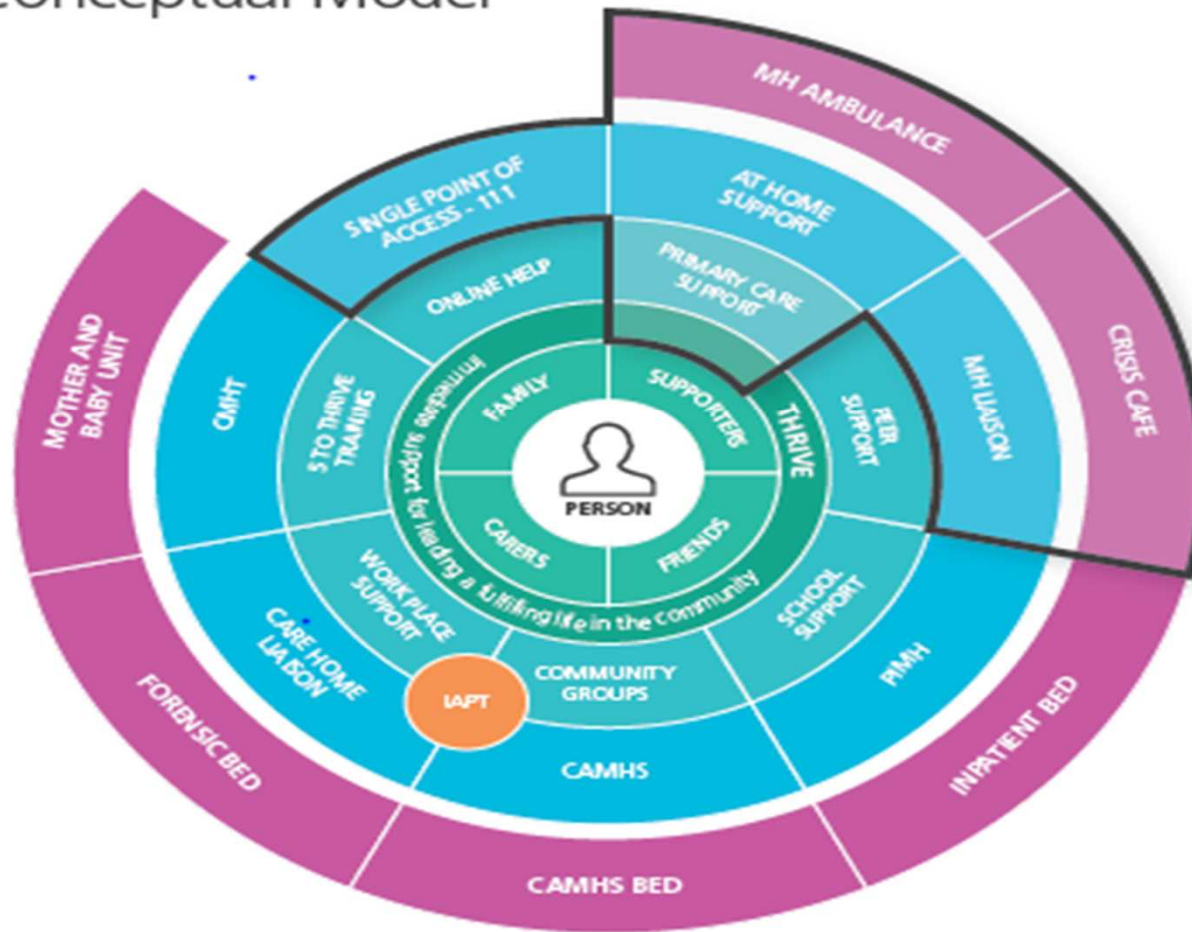
The draft strategy has been co-created with people with lived experience, their families, carers and supporters along with our partners including third sector and statutory organisations. People attending the LGI meetings were asked to bring images which depicted 'thrive' to them. These images are included on the front of the strategy along with a new logo – which was chosen at one of the LGI engagement events.

BSW Strategic Work Streams

- Implementation of THRIVE and creating community resilience
- Providing early help and navigation that is community based
- Redress the balance between physical and mental health and improve outcomes
- Provide better support for people in crisis
- Deliver safe, effective and accessible care in the best possible facilities
- Minimise the need for high intensity, out of area care and treatment

Draft Conceptual Model

BSW THRIVE Conceptual Model



Current BSW gaps

- Out of hours provision and early intervention to reduce preventable crisis (including on the day activity) Help support GP resilience
- Learning Disability, ASD and challenging behaviour provision and pathways – dedicated work programme being developed
- Personality disorder pathways and support
- MH provision across Primary Care Networks
- Gaps in planning and provision of transitional care
- Mild to moderate Perinatal and Infant Mental Health provision
- Review access pathways to reduce ‘ people bouncing round the system’
- Dual Diagnosis pathways
- Co-creation required to support development of 16-25 pathway

Key Strategic Actions

- **We will build community resilience**
 - Build model of 'hope' around mental illness and mental well being
- **MH training to become mainstream across communities and businesses**
- **Embrace digital solutions**
 - Planned pilot of skype consultations for BSW
 - Review of all age on line counselling services to expand access
 - Health Apps being explored
- **Develop our future workforce today**
 - Dedicated multi agency working group in place
 - New roles being designed to fill known workforce gaps
 - More joint roles between NHS and third sector including peer support workers
- **We will provide early help and navigation that is community based**
 - Collaborative work with High Intensity User service
 - Link to development of Primary Care Networks across BSW

Key Strategic Actions

- **We will provide better support for people in crisis – successful in collaborative national bid for 700k funding**
 - New Place of calm/ crisis cafes to open during 2020
 - New Personality Disorder pathway to be co-created
 - New single point of access for Out Of Hours via 111 from Jan 2020
 - Planned review of mental health liaison including 24/7 needs assessment
- **We will redress balance between physical and MH and improve outcomes**
 - Physical health checks for individuals with Serious Mental Illness
- **We will listen and believe families and carers**
 - Dedicated communication and engagement group in place
 - People with lived experience on MH programme board and strategic work streams
- **We will empower people to grow, develop and connect**
 - Improved coordinated work with third sector and local authorities across BSW
 - Integrated practice between primary and secondary care
 - Focus on community based provision

BSW AWP Service Reconfiguration

- Review of BSW AWP bed base – have we got the right number and type of beds in the right place for our local population
- Subject to full public consultation
- Address issues of historic estate and CQC concerns
- Process subject to NHSE Service Reconfiguration process
- **Paused due to purdah**



ANY QUESTIONS ?