



LSCB

Bath & North East Somerset
Local Safeguarding Children Board

Annual Report 2018 – 2019

Executive Summary

September 2019

1. The Role of the Local Safeguarding Children's Board (LSCB)

B&NES LSCB is a statutory (though independent) Board established under the Children Act 2004 (Section 13) and the Local Safeguarding Children Board Regulations 2006. It is independently Chaired and consists of senior representatives of all the principle stakeholders working together to safeguard children and young people across the area.

The Terms of Reference for the LSCB are available on the LSCB website:

[Terms Of Reference](#)

As the LSCB for B&NES, we are responsible for coordinating and monitoring the work of agencies, especially but not exclusively those providing services to children and families, to safeguard and promote the welfare of children. In doing so the Board:

- Promotes and supports activities that protect children and young people from significant harm and the continuing risk of harm;
- Works to raise awareness within the wider community, including statutory, voluntary and independent agencies, about how everybody can contribute to safeguarding children and promoting their welfare.

Safeguarding is everyone's business

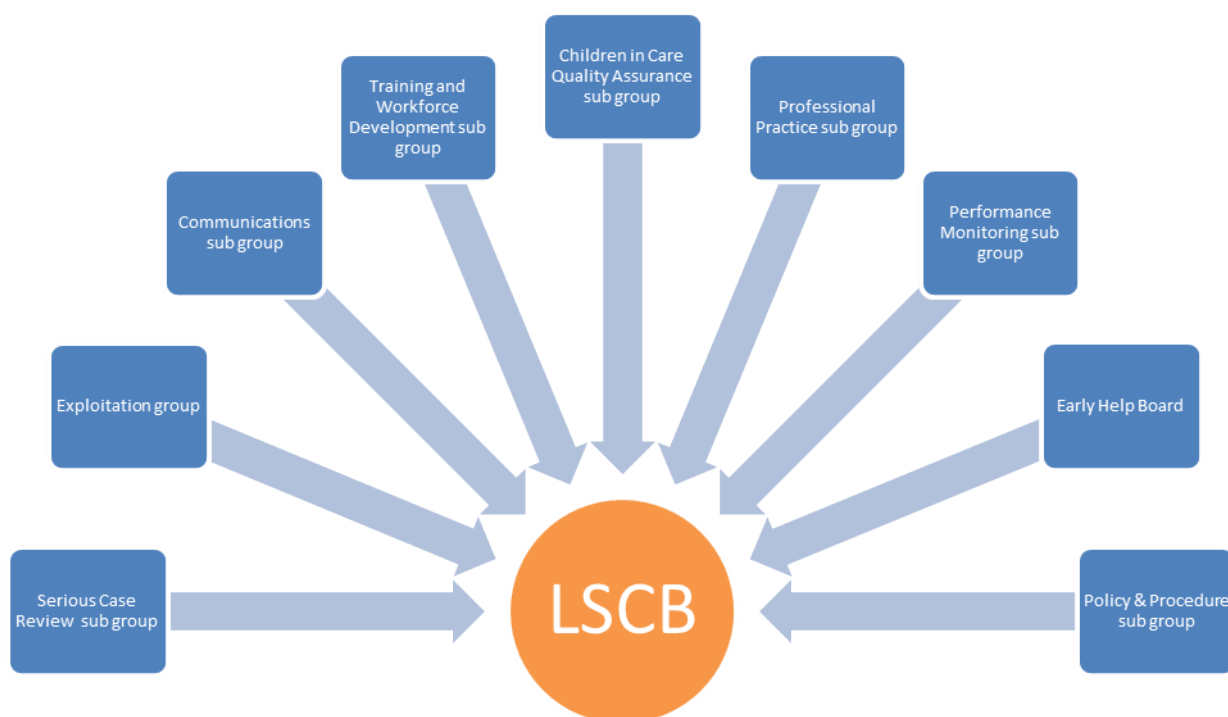
2. The Work of the LSCB

The work of the LSCB includes but is not limited to:

- Taking the lead to ensure that agencies work well together to safeguard children and young people.
- Ensuring that all organisations comply with their duty to safeguard and promote the welfare of children and young people.
- Coordinating and delivering multi-agency safeguarding children training.
- Promoting and publishing multi-agency child protection and safeguarding policies and procedures.
- Commissioning Serious Case Reviews and multi-agency audits so that we learn what we need to improve in terms of the work that we carry out with children, young people and families.
- Overseeing multi-agency learning events and conferences so that good practice is shared.
- Playing a key role in ensuring and monitoring that recommendations from inspections and reviews about safeguarding children are carried through.
- Working alongside other committees/boards such as the Children's Trust Board (dissolved in December 2016), Local Safeguarding Adults Board and the Health & Wellbeing Board to ensure that work to safeguard children is co-ordinated.

3. The Sub-Groups of the LSCB

The LSCB has nine sub-groups. During 2018-19, the Policy and Procedure became a separate entity from the Performance Monitoring Group (PMG). The Terms of Reference for each of the sub-groups is available on the LSCB web page [here](#).



- Each sub group reports progress on the Board's Strategic Plan for 2018-21 on a quarterly basis and contributes to the Chair's Business Management Group meetings. Each sub-group has a duty to challenge practice within the partnership where it identifies issues of concern.
- The full Annual Report 2018-19 lists the key achievements, challenges and priorities for each sub groups. The report is available on the LSCB website <https://www.safeguarding-bathnes.org.uk/children/local-safeguarding-children-s-board/2-annual-report-and-strategic-plan>
- During 2018, the LSCB partners and Business Management Group developed a new Strategic Plan for 2018-21 which is more outcomes or impact focused and was finalised in June 2018 and then published on the safeguarding website. [LSCB Strategic Plan 2018-21](#)
[LSCB Strategic Plan 2018-21 on a page](#)
- The Business Management Group agreed the reporting process for the new Plan to the LSCB so that regular updates can be discussed at each Board at the year-end summary is posted on the website as before after each complete year. [LSCB Strategic Plan Year End Summary March 2019](#)

The new Plan has 5 key outcomes and 13 priorities in order to meet them.

Five Outcomes

- All children and young people are safe
- Children, young people, carers and families contribute to the way services respond to child protection and children in care safety concerns
- LSCB is assured that safeguarding is embedded; is delivered to a high standard and is effective across all partner agencies
- A skilled, trained and competent workforce
- The LSCB is effective and responds to the new legislative requirements



4. Outcomes

- Throughout 2018-19 B&NES Children's Social Care recorded continued pressures in relation to safeguarding activity. The contact rates continued to be high across the partnership. Partners have continued to focus on the importance of developing early help resources that will prevent the escalation of concerns for many of our vulnerable families. The Early Help Assessment, related guidance and training materials were re-launched in early 2019: the early help allocations panel (EHAP) has worked effectively to support an increased number of families

that did not meet the statutory social care thresholds. The Head of Safeguarding Outcomes and colleagues re-established the Quarterly Partner Meetings and Children's Social Care have attended the Child Protection Forums. The Multi-Agency Safeguarding Hub (MASH) and the work of the Early Help Board have continued to make significant contributions to this agenda. Work took place to review the multi-agency threshold document in 2018/2-19 and the revised documents will be completed in 2019.

- Children's Social Care has effectively worked with multi-agency partners to safeguard children, young people and families across B&NES in 2018/2019. A significant number of families have been supported as detailed below:
- **166** number of children supported by Connecting Families. The target is to work with **700** families by 2020 and, at the end of 2018/19, had identified **683** families, all of whom have had an assessment and lead worker.
- **1425** number of children supported by Children in Need Services ***according to LA definition of CIN.*** (1759 – 17/18 – “Children with an episode of need at any point during the year” – DFE definition)
- **272** number of children supported by Child Protection Services (313 – 17/18 – “Number of children on child protection plan at any point during the year” – DFE definition)
- **264** number of children supported by Looked after Children Services (229 – 17/18 – “All children looked after during the year ending 31st March excluding those only looked after during a series of short term placements – DFE definition)
- **1277** number of children supported by an EHC Plan - snapshot of the number of EHCP children as per the census date in January 2019
- During 2018/19, **1,195 referrals** were received by early help services. (please note Q4 data is lower due to a reporting issue with one provider)
- Throughout 2018/2019 there was the further development of the Care Leavers Local and the development of Adoption West, the Regional Adoption Agency co-owned by the 6 Local Authorities. Children's Services, along with the CCG and multi-agency partners were judged as effectively implementing the SEND Reforms following the Ofsted/CQC inspection of SEND in B&NES in March 2019. Much work has been undertaken to streamline the strategic approach to exploitation and revised pathways have been reviewed for most of the 6 strands. The Adolescent at Risk Team (ART) has been expanded to have provide specialised support around contextual safeguarding.
- The Number of Common Assessment Framework's (CAF) had fallen over the previous 12 months. The Early Help Assessment tool, guidance and training were relaunched in early 2019. Early adopters were involved in testing out the new framework and guidance. At the end of quarter 4, 13 early help assessments were completed in the new format.

- The LSCB has also:
- Further strengthened joint working arrangements between the LSCB and Local Safeguarding Adults Board (LSAB) which are now embedded in each Strategic Plan and the continued work of the joint Communications sub-group and joint Training & Development sub group.
- The Professional Practice sub group (PPG) has continued to audit and scrutinise the work and decision making of all agencies involved in safeguarding decision making. In the past year the group has been able to challenge how agencies are working to prevent and reduce drift in safeguarding cases as well as challenging practice in relation to decision-making at Initial Child Protection Conferences. The Board has taken very seriously the challenges in regard to preventing some of the drift identified by the PPG in some of this audit activity.
- The LSCB has continued to support the work of the Willow Project and continues to fund the work of the Child Sexual Exploitation (CSE) consultant who has greatly assisted in the development of the project as well as playing an instrumental role in providing training and updating the CSE Strategy and Action Plans into an overarching Youth @ Risk Strategy covering all exploitation which will be launched in 2019/20.
- The LSCB has continued to undertake work on the two SCR's that were commissioned two years ago, one in relation to a young baby and the other for young people who were involved in Operation Button, the follow up investigation to the convictions made in August 2016 of a number of men who had been charged with offences relating to concerns of Child Sexual Exploitation. We anticipate that both of these will now be published in 2019/20. The SCR sub group has also completed two Learning Reviews for cases that did not meet the threshold for an SCR, one action plan is completed and the other is underway and being monitored by the SCR sub group. Finally with changes in legislation through Working Together 2018 and the SCR process, the SCR group has undertaken one 15 day Rapid Review into a case involving a stabbing. The National Panel agreed with the recommendation that this did not meet the threshold and, the SCR group is overseeing an action plan as a result.
- The LSCB has continued to update and revise a range of key policies and guidance to ensure that the Board continues to be informed through documents that remain up to date and relevant to emerging priorities. In the past twelve months the Board has endorsed and revised a range of documents some of which include the Bruising in Children Protocol, Youth @ Risk Strategy, Revised Information Sharing Protocol, Managing Allegations Protocol, Neglect Toolkit, Revised LSAB & LSCB Escalation Protocol, B&NES Domestic Abuse Strategy 2018, the Board Assurance Framework, and LSCB and LSAB Communications and Media Protocol.
- Robert Lake unfortunately had to retire in January 2019 as the Independent Chair due to health issues and Bruce Laurence, the Director of Public Health who was the Deputy Chair has stepped up to chair the LSCB in the interim.

- Safeguarding Training we delivered:
 - 72 LSCB training sessions taking place comprising of 25 different courses
 - 11400 Inter-agency training places made available
 - 1287 Inter-agency training places booked
 - 1124 Inter-agency training places attended
 - 797 professionals trained
 - On average over 85% completed evaluations and these are demonstrating impact.
 - 99 Professionals attended LSCB Stakeholder Day on Neglect
 - 9 Single agency training sessions taking place
 - 275 E-learning modules started and completed through the Learning Pool

- The LSCB faces a major Challenge/Area for Development in 2019-20:
 In last year's report we highlighted the implementation of the Wood Report as one of the key challenges for the Board. Members of the LSCB have actively participated in a regional group which continues to look at future options for all agencies across the Avon and Somerset Police force area in light of the recommendations of the Wood report. This work will continue throughout 2019/20 in order to ensure that we have inter-agency arrangements that ensure we are in-step with the over-arching recommendations of the Wood Report whilst at the same time seeking to protect and build upon the very positive observations that were central to the Ofsted report in May 2017. B&NES Council have also met with their new safeguarding partners the BaNES NHS CCG and Avon and Somerset Constabulary to look at possible new safeguarding arrangements to replace the LSCB from 29 September 2019 in line with Working Together 2018 and the new Statutory Guidance. The overarching view is that the new arrangements should be 'placed based' and focus on B&NES but look to inter agency working across the police area and CCG area looking towards Wiltshire and Swindon. Local plans for the new safeguarding arrangements in B&NES have to be published by 29 June 2019.

5. Engagement with Children & Young People

B&NES Council has a contract with Off the Record (OTR) to promote the participation of children and young people, particularly those who are most vulnerable, in order to ensure their voices are heard and responded to, and to encourage their active involvement in decision-making, service delivery and strategic development.

<http://www.offtherecord-banes.co.uk/>

The following is an overview of the participation work undertaken by the In Care Councils, and Youth Forum covers the period April 2018- March 2019.

Junior in Care Council - JICC:

The JICC group meets three/four times a year, it currently has 11 members and is bonding really well. This year Social Care and OTR have organised:

A bowling activity

A Christmas Social

A Visit to the Roman Baths

Consultation - on one-page care plans

Senior in Care Council - SICC:

They meet for full meetings weekly basis during term time and work very closely with Children's Social Care and the In Care Council steering group made up of a range of professionals. Work this year included;

- Made a short video about Being In care
- Consulted with advocacy service.
- Meet with LAC nurses to give views on accessing GP's and transitioning from children's to adult services.
- Successful Boat trip activity in Summer
- Two longstanding members completed GCSE's and transitioned to college
- Designed a display banner for ICC
- Attended a Seminar and Q&A session at Bath Spa University for PGCE students.
- Took part in the recruitment of Director of Childrens Services
- Supporting with Participation Training for B&NES/NHS/Virgin Staff

Care Leavers:

The participation worker for ICC has been working closely with Social Care colleagues, as part of the ICC Planning group to plan for a programme of engagement with care leavers for 2019-2020.

Youth Forum:

Every two years there are elections held across the Secondary Schools of B&NES to nominate a Member (MYP) and Deputy Member (DMYP) of Youth Parliament. They work across B&NES to influence and campaign on behalf of young people living in the authority, supported by and working with the Youth Forum. The focus of their work has been Make Your Mark (MYM), a young person led national campaign.

- MYP attending and being debate lead at the House of Commons.
- Change of MYP in Jan 2018 and new Deputy MYP
- Attending the regional Exeter BYC event
- Working in collaboration with First Bus.
- MYP spoke at DHI event
- MYP/DMYP met with local MP's
- Delivered a workshop on Challenging Discrimination at Primary Parliament 2018
- Providing question to the LSCB/LSAB Communications sub group
- Helping to deliver training to B&NES staff as part of the participation contract
- MYP presenting to the March LSCB about the work of the Youth Forum/Youth Parliament
- Reviewing the LSCB website and helping to make changes
- Meeting with the B&NES children workforce lead Jen Russell Discussing the training needs that they think should be made available
- Developing the 7th participation Standard for Commissioned Services
- Working with Nightstop to raise funds for their self-care kits

“The Youth Forum has allowed me to gain insight into the issues surrounding young people in B&NES, and what we can do to help” (YF member Feb 2019)

“Making a difference to the local community and contributing to national change” (YF member Feb 2019)

Useful links to:

Participation and consulting with Children and Young People

Click below:

<http://www.bathnes.gov.uk/services/your-council-and-democracy/consultations/consulting-children-and-young-people/strategy-part>

Here you will find a range of documents that evidence how we engage with our children and young people in B&NES

6. Independent Chair’s Closing Summary



As I said in my foreword to the full LSCB Annual Report, if you have read this far I expect you will have been impressed both by the work that has been done by the LSCB and the partners that it represents, and also by the scale of the safeguarding challenge that remains and indeed grows in challenging times.

It is a fitting tribute to the Board in its final year that OFSTED gave our Children’s Services a score of “good” last year and that a joint OFSTED/Care Quality Commission Special Educational Needs and

Disability (SEND) inspection this year yielded very positive feedback. Public and voluntary sector staff who work in safeguarding and protecting children, including social workers, health workers, community and housing workers, schools and colleges, police, and others, are asked to take on some of society’s most difficult challenges. And yet, knowing how essential this role is, they work strenuously and tirelessly, and often, in recent years of financial and workforce pressure, front-line teams have had to meet increasing demand with diminishing resources.

Therefore I would like to take this opportunity to give my thanks to all safeguarding workers in Bath and North East Somerset, as the Chair of the Board overseeing and directing their work.

We are also lucky to hear regularly at the Board from children and young people including those in care. When we do I am reminded that children can show remarkable resilience, and with the right support can survive exceptionally difficult early circumstances and become strong and confident young adults.

As the Board dissolves into a broader all-age community safety and safeguarding partnership those of us who work with children and young people must and will ensure that there is no loss of focus and momentum and strive to attain the highest service standards and the best possible outcomes with whatever resources we have.

It has been my privilege to be the last (acting) Chair of this Board for a brief period and I would like to thank, on behalf of all members, Mr. Robert Lake who was the very effective independent chair of both Children’s and Adults’ Safeguarding Boards until ill health forced his retirement from that role.

