
Bath & North East
Somerset Council

Care and Support Charging and Financial Assessment Framework

Easy read version of:
Consultation document

24th September – 3rd December 2019



Contents



3 Introduction



4 Charging for adult social care services



5 Our ideas



8 How will these changes affect you?



9 What won't change



11 Have your say



13 What next?



13 For more information

Introduction



Bath and North East Somerset Council is looking at how we ask people to pay towards adult social care services.



We are suggesting some ideas about how we do this.



Before we make any decisions we want to know what you think.



Please read this document and tell us what you think by answering the questions on the separate questionnaire. You can do this on a paper copy or on-line.



We need your answers by **Tuesday, 3 December 2019.**

Charging for adult and social care services



Bath and North East Somerset Council supports about 2,100 people with adult social care services.



These services cost money and we will ask some people to pay towards them, if they can afford it.



There are laws and rules about how much we ask people to pay towards services.



We want to make sure that:

- The amount we ask people to pay is fair and easy to understand



- We follow the law

Our ideas



These are our ideas for what we should ask people to pay towards adult social care and support services:



- When you need adult social care services, you will be offered a meeting to work out how much you pay



- We are suggesting that you will have 2 weeks to say if you want this meeting



- If you don't reply we will not fund the care until you get in touch with us



- We will tell you about people who can give you information about benefits you could claim - like Pension Guaranteed Credit and Employment Support Allowance



- We can let your family or friends pay extra money so you can have a more expensive service.

We will check that they can afford to do this and ask them to sign an agreement with us



- We want to have a way for people who own just one home to pay later if they don't have the money straight away



- We want a way to pay for your care while lawyers are arranging for someone to make decisions for you



- We want rules which say how much money you can keep for yourself. Please refer to our Disability Related Expenditure Factsheet for more information



- We may include the costs of transport and education when we think about how much you can afford if your care and support plan shows you need this



- We will only include the **standing charge** of the costs of water, gas and electricity when we think about how much you can afford.

The **standing charge** is the cost of providing the service. It does not include the cost of the water, gas or electricity you use



- We will charge people a one-off fee if they ask the council to arrange their care for them, even though they will pay for their actual care themselves



We have updated our Direct Payments Policy to make the information clearer.

How will these ideas affect you?



Some people will not be affected.



These changes may affect people who:

- Are already getting money towards the water, gas and electricity they use



- Are not claiming all the benefits that they could claim



- Have not given us recent information about how much they could pay



- Are getting some disability benefits which are not to do with a disability

What won't change



We will carry on offering you a meeting to work out how much you can pay towards your care.



When we work out how much you can pay, we will not include any money you get from paid work or these benefits:



- A Disability Living Allowance for mobility. Mobility is moving around



- Child Tax Credit



- Disabled Person's Tax Credit



- The Savings Credit in a Pension Credit

Care and support services that are free



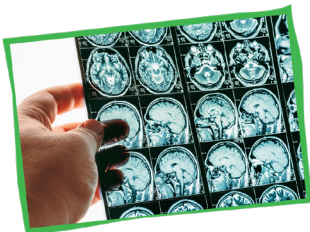
All councils must provide these services free of charge:



- Short periods of support to help you get back to being independent after an accident or illness



- Bits of equipment or changes to your home to help you be more independent - up to £1,000



- Care for people with a brain disorder called Creutzfeldt-Jacob Disease



- Care for people receiving certain types of care for their mental health condition

Have your say



Please tell us what you think about the ideas we are suggesting.



You can do this by completing the separate questionnaire.

If you need help to complete the questionnaire please let us know.

Speak with us



You can also come and find out more and tell us what you think at one of these public meetings:



Wednesday 2nd October 2019

4.30pm – 6pm
Council Chamber
The Hollies
Midsomer Norton



Wednesday 2nd October 2019

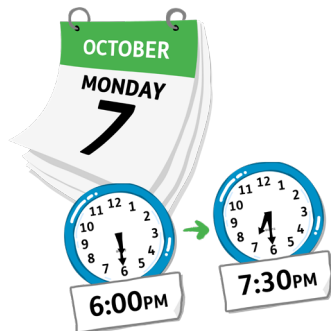
6.30pm - 8pm
Council Chamber
The Hollies
Midsomer Norton



Thursday 3rd October 2019
2.30pm – 4pm
Council Chamber
The Hollies
Midsomer Norton



Thursday 3rd October 2019
4.30pm – 6pm
Council Chamber
The Hollies
Midsomer Norton



Monday 7th October 2019
6.00pm – 7.30pm
Community Space
Market Walk
Keynsham



Tuesday 8th October 2019
10.30am – 12 noon
Village Hall
Compton Martin



Thursday 10th October 2019
2.30pm – 4pm
Timsbury Hub
YMCA building
Timsbury



Monday 21st October 2019
4.30pm – 6pm
Brunswick Room
The Guildhall
Bath



Monday 21st October 2019
6.30pm - 8pm
Brunswick Room
The Guildhall
Bath



Tuesday 22nd October 2019
6.30pm – 8pm
Community Space
Market Walk
Keynsham



Wednesday 6th November 2019
2.30pm - 4pm
Kaposvar Room
The Guildhall
Bath



Wednesday 6th November 2019
4.30pm – 6pm
Kaposvar Room
The Guildhall
Bath

What next?

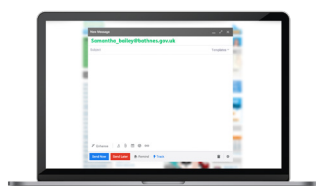


Your answers will help the council to decide which changes they will make to the way they ask people to pay towards adult social care services.



There will be a new policy which will start from **Monday, 6th April 2020**.

For more information



If you need any more information please contact us:

Email:
cafaconsultation@bathnes.gov.uk



Telephone: **01225 477810**

Help with benefits

If you need any help with benefits you can contact:



Bath & North East Somerset Council Benefits Department

Telephone: **01225 477000**

Website:
www.bathnes.gov.uk/contact-us



Citizens Advice

Telephone: **0344 848 7919**

Website: **www.citizensadvice.org.uk**



Age UK

Telephone: **01225 466135** (BANES)
or **0800 055 6112**



Pension Credit

Telephone: **0800 99 1234**
Textphone: **0800 169 0133**
Website: **[www.gov.uk/pension-credit/
how-to-claim](http://www.gov.uk/pension-credit/how-to-claim)**

