

Health and Wellbeing Select Committee 30th March 2016 Substance Misuse Update

Amanda Davies

Drug and Alcohol Team and Young People's Drug and Alcohol
Commissioner



Avon and Wiltshire **NHS**
Mental Health Partnership NHS Trust





Drug misuse harms families and communities



Parental drug use is a risk factor in **29%** of all serious case reviews



Heroin and crack addiction causes crime and disrupts community safety



A typical heroin user spends around **£1,400 per month** on drugs (2.5 times the average mortgage)



The public value drug treatment because it makes their communities safer and reduces crime. **82%** said treatment's greatest benefit was improved community safety



Alcohol misuse harms families and communities

1
2

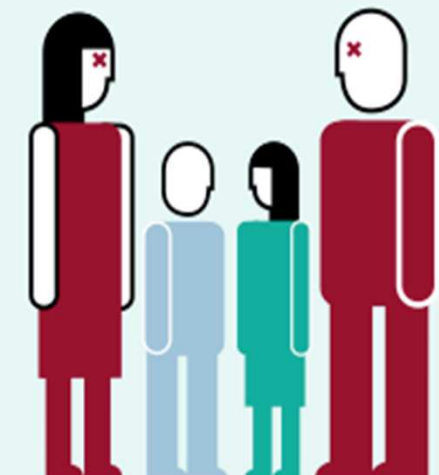
Almost **half**
of violent
assaults



Domestic
violence and
marital
breakdown



27% of
serious
case
reviews
mention
alcohol
misuse

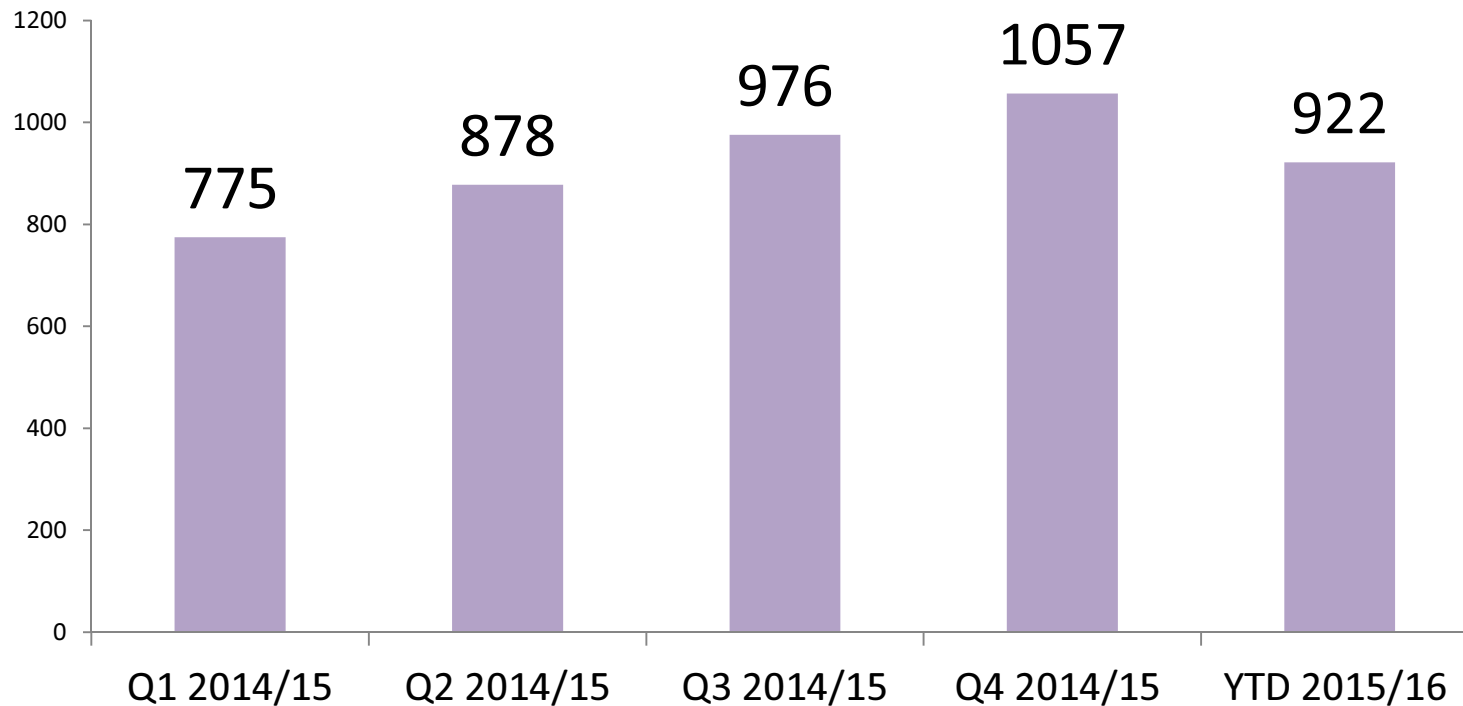


Physical, psychological
and behavioural problems
for children of parents
with alcohol problems



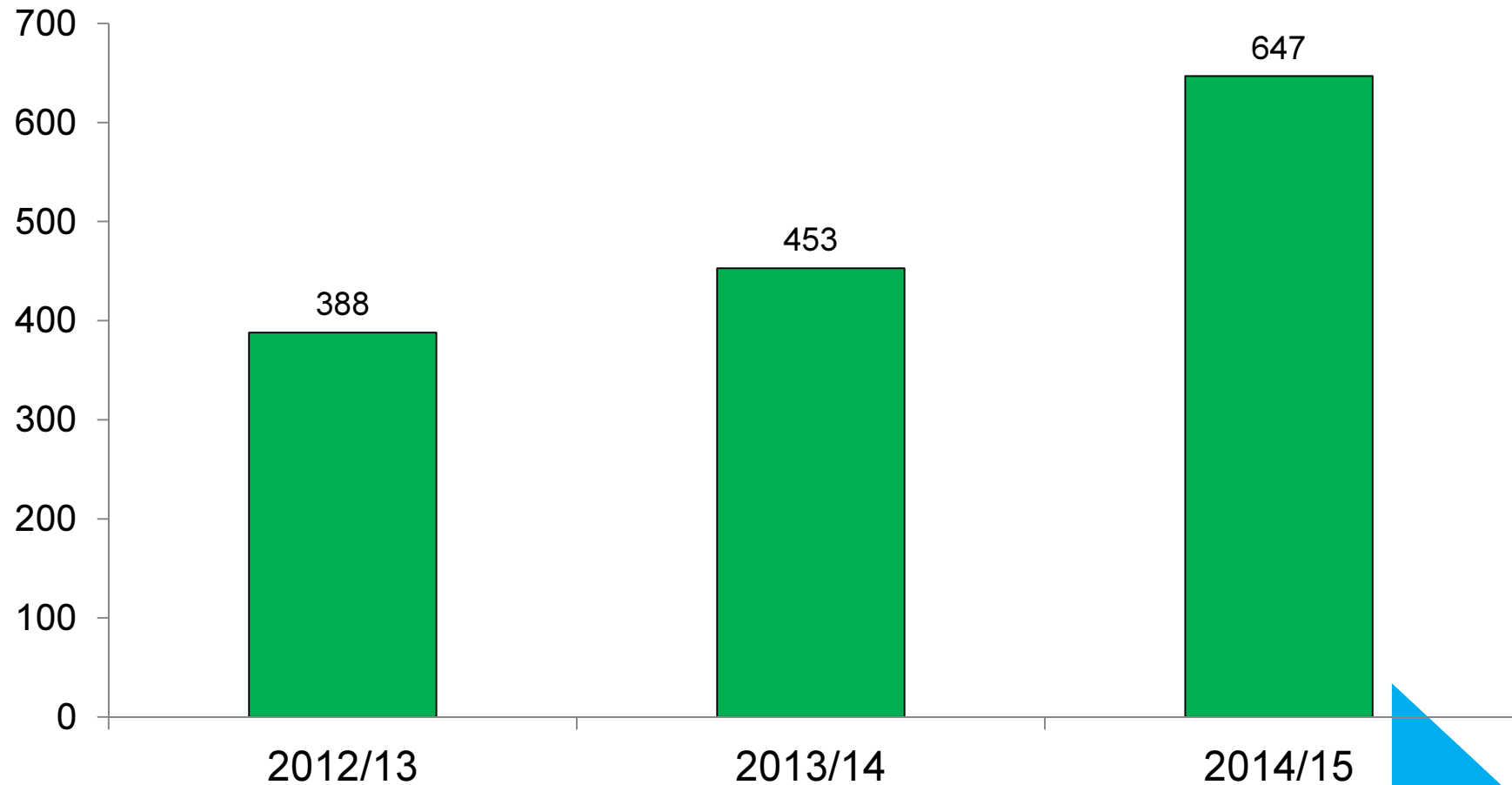
17% of road
fatalities

B&NES Adults in treatment

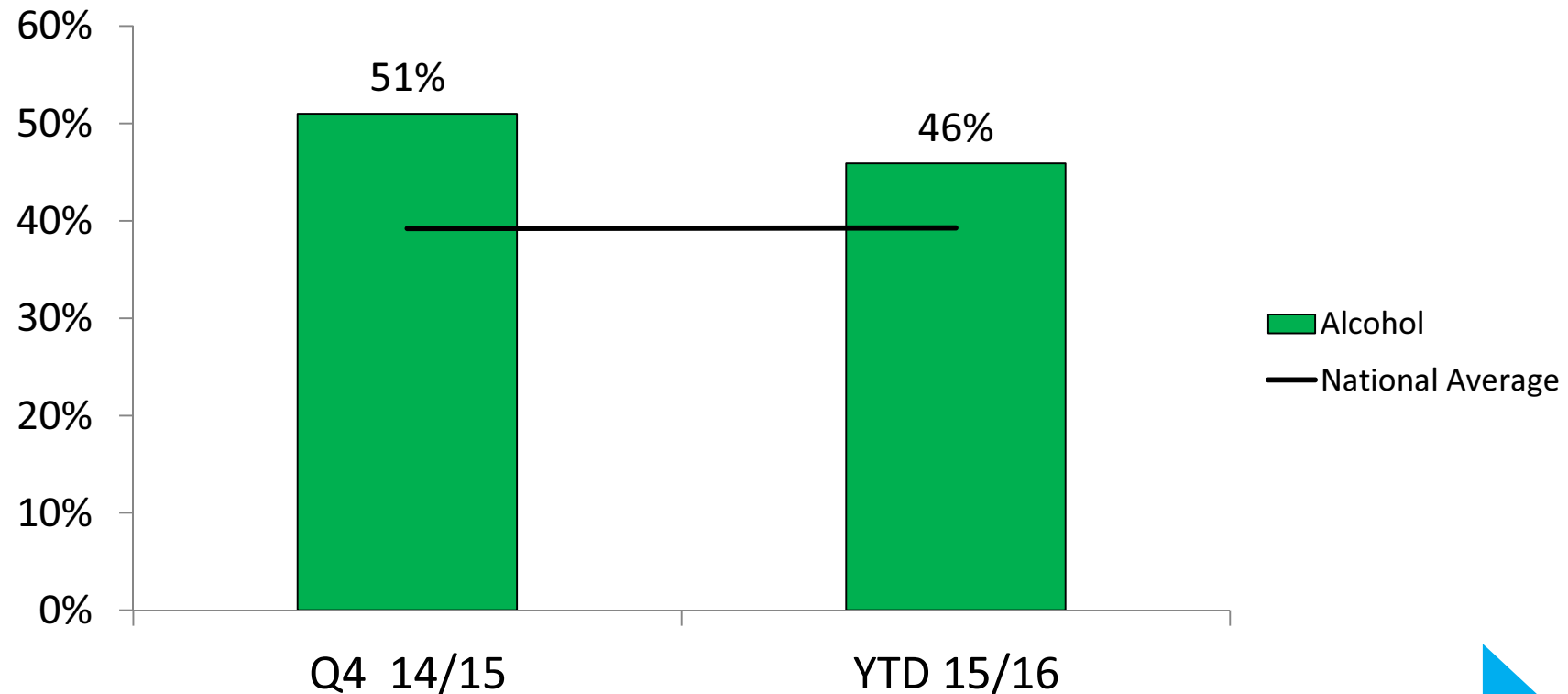


More than 70% of adults in treatment in B&NES are complex & have multiple needs.

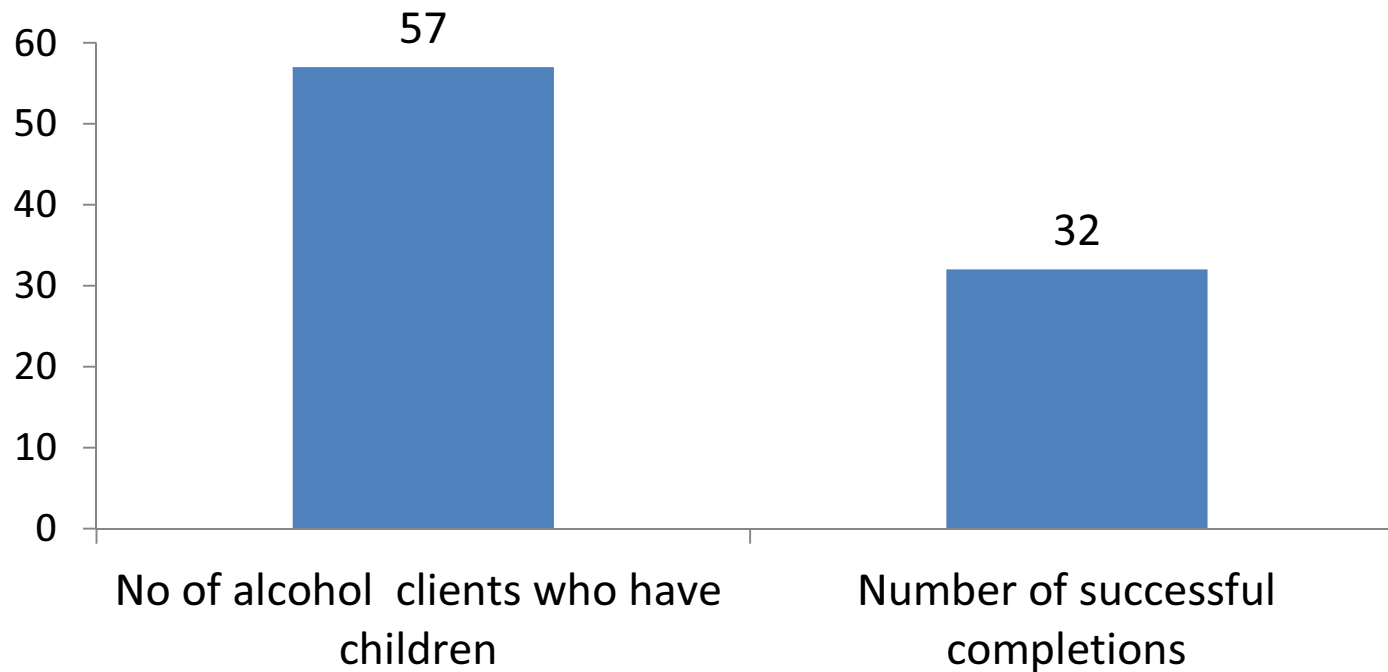
Growth in Alcohol Clients



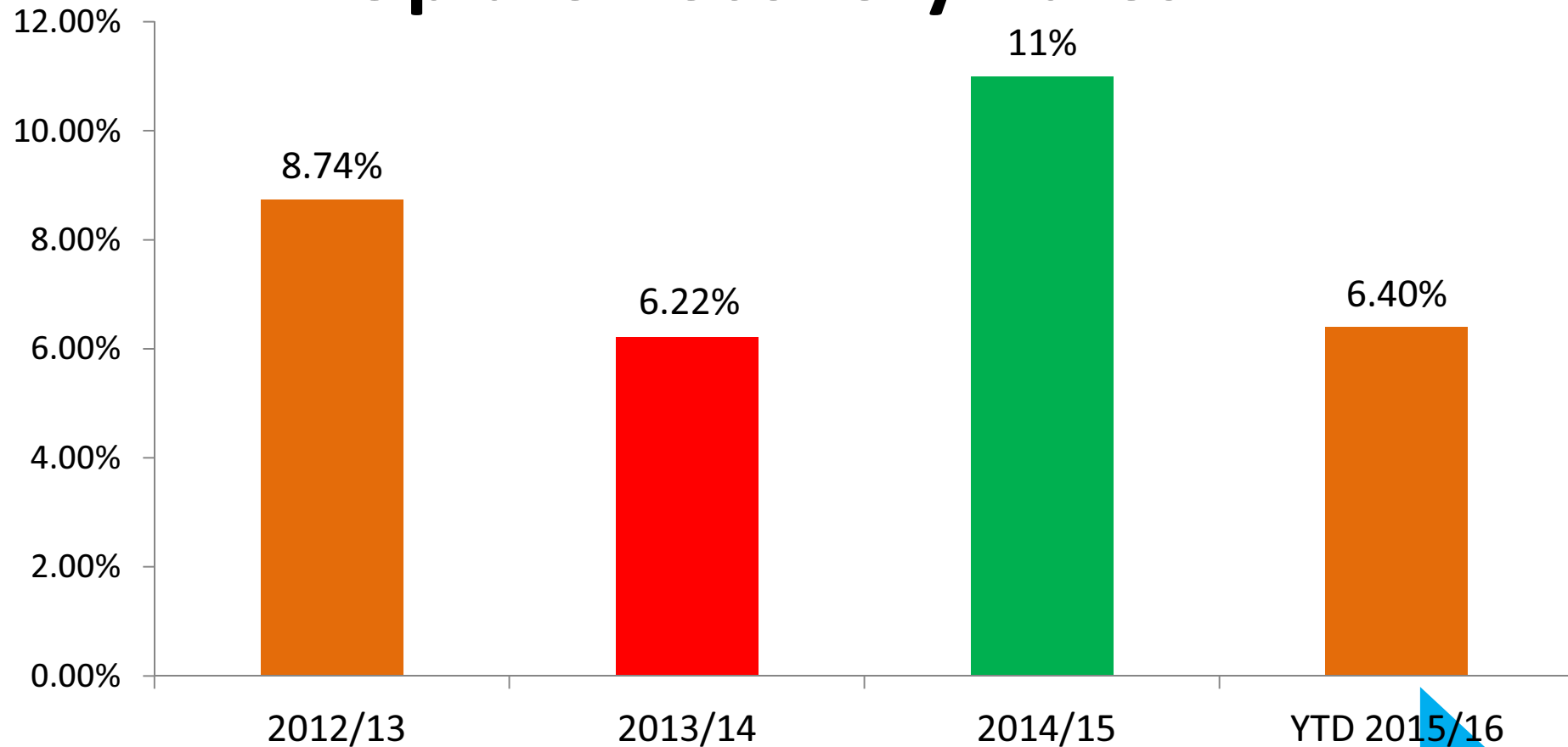
Recovery outcomes for B&NES alcohol clients exceed national average



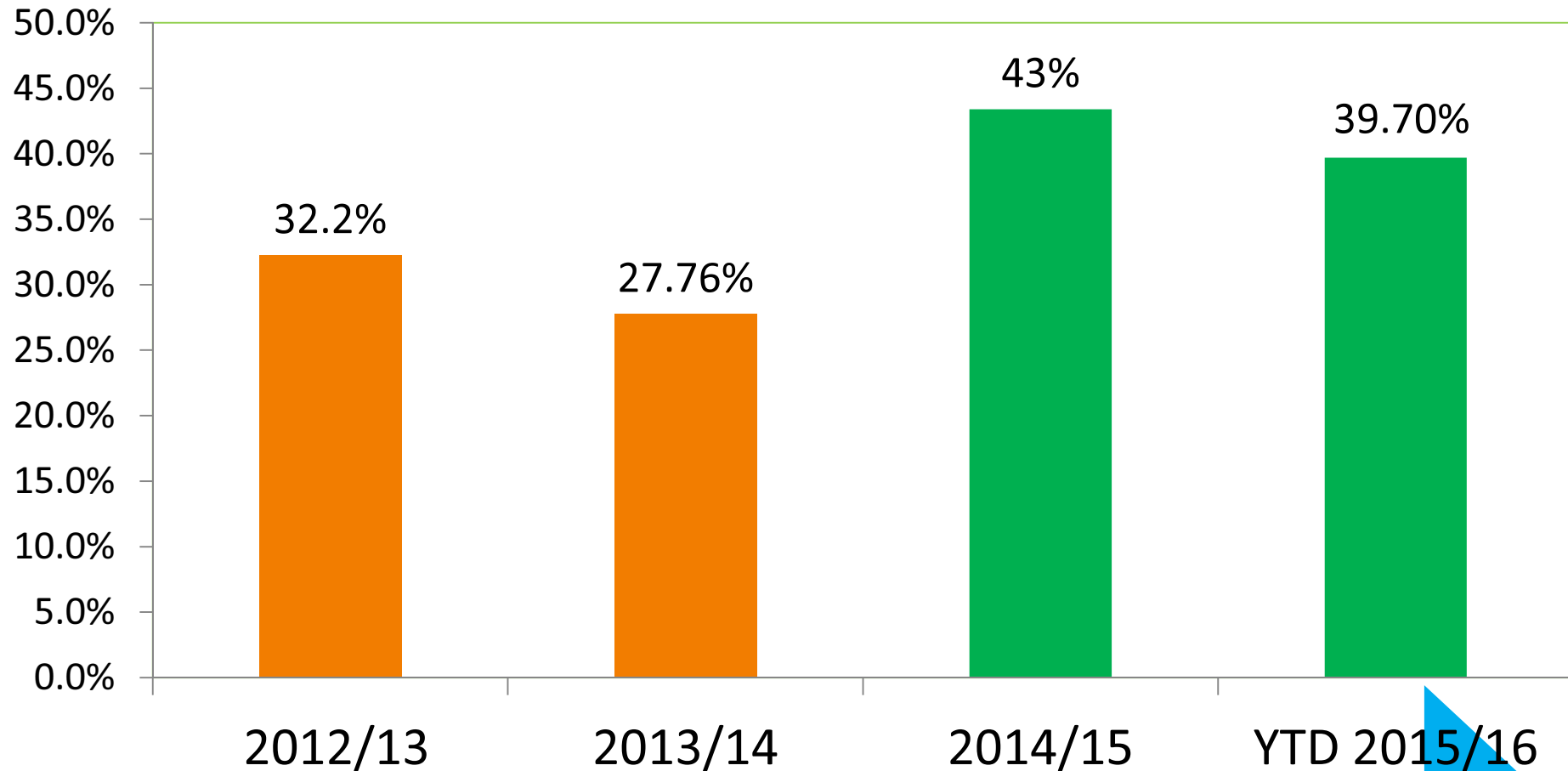
56% of parents successfully complete alcohol treatment.



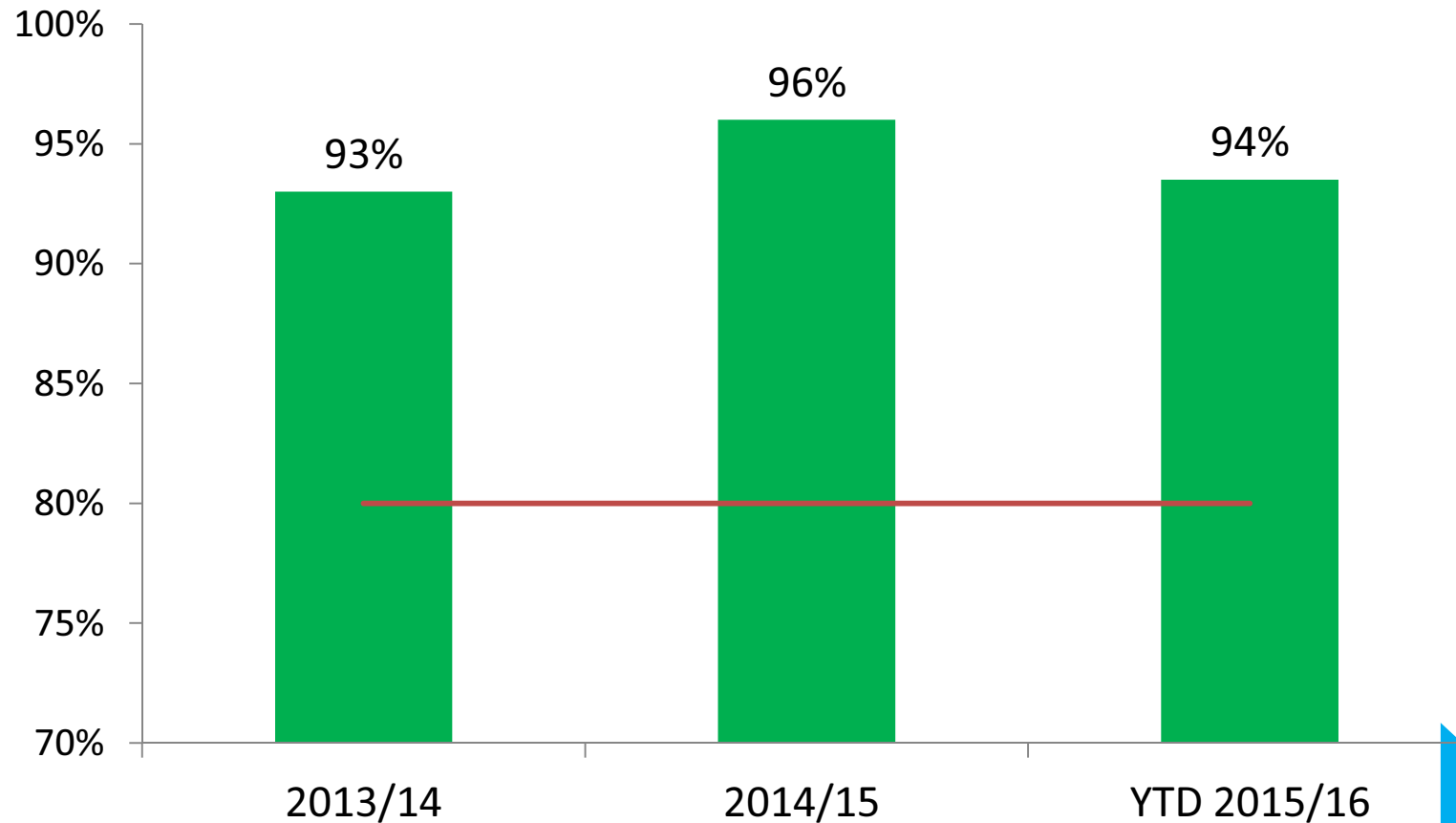
Opiate Recovery Rates



Non Opiates Recovery Rates



Harm Reduction Hepatitis C Testing



Young People's Needs Assessment and Performance

- An increase in the complexity of issues faced by young people
- Increase in cases of children at risk of sexual exploitation
- The RUH emergency department now refers directly to Project 28
- Identified the need to prioritise support for families
- Performance continues to be excellent with 97% of young people successfully completing their specialist support

Children & Young People Health & Wellbeing Survey 2015

There is a positive downward trend in the percentage of the young people drinking alcohol and smoking in the last week



Re-Model

- » Fully integrated recovery treatment system
- » DHI & SDAS co locating (the Beehive & the Hub Midsomer Norton) and expand its use of Riverside Health Centre
- » Group based programmes expanded
- » Closer work with partner agencies

- » Community based treatment and dry house for detoxification/community rehabilitation
- » Added value to the treatment system through social care placements, volunteers and peer mentors programme

Building sustained Client recovery

