

# Resources PDS : Performance Management Update

Steve Harman

Strategic Performance Manager

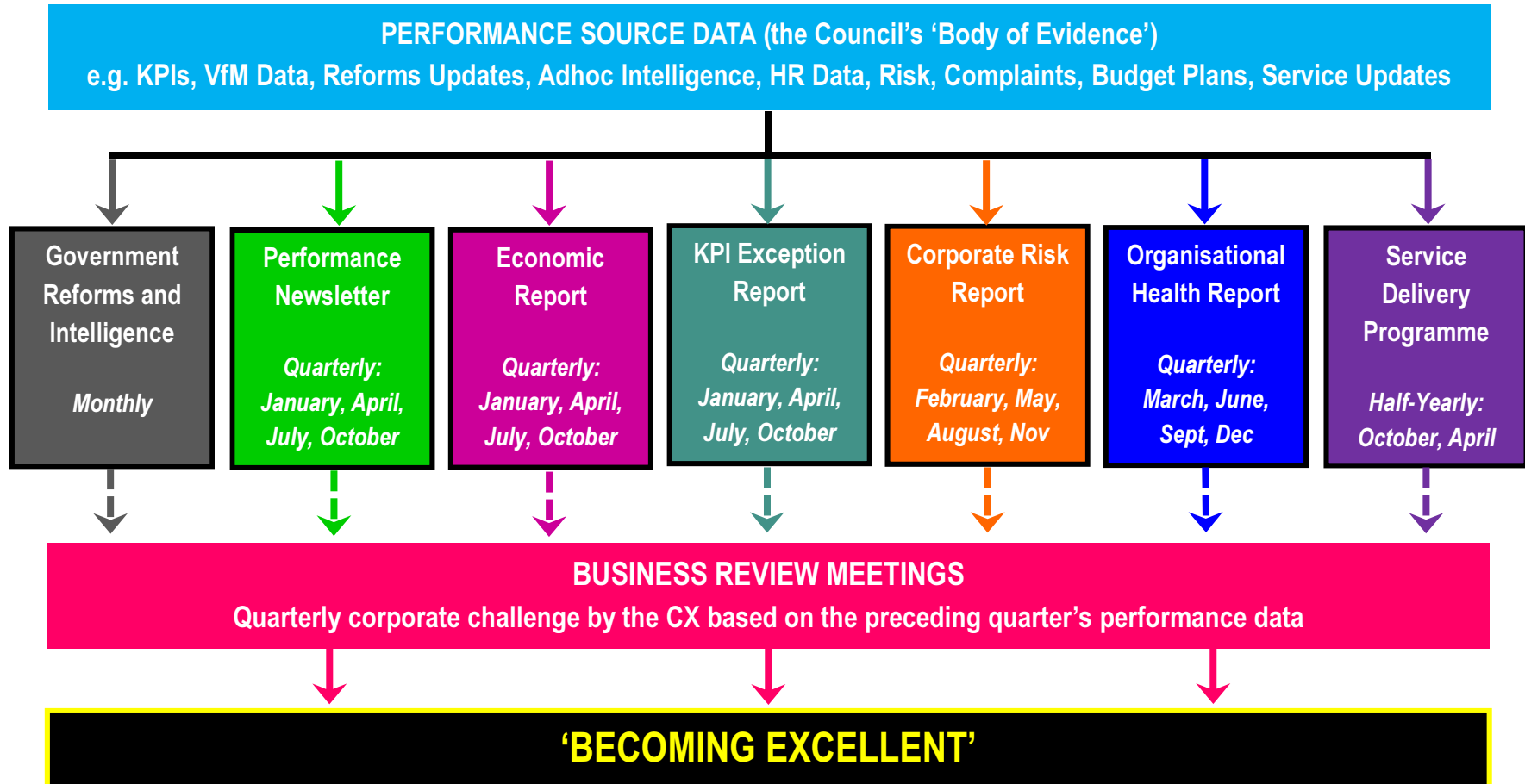
## **Old World Pre - 2010**

- National Performance Framework
- Comprehensive Performance Assessment (CPA)
- Audit Commission
- VFM Assessment
- National Performance Indicators (300+)
- Council wide and Service Inspections (Audit Commission, Ofsted, CQC)
- National Benchmarking and League Tables

## **New World - Post 2010**

- 3 National Frameworks (100 indicators)
  - Adult Social Care
  - Children's Safeguarding
  - Public Health
- Service Inspections (Ofsted and CQC)
- VFM Assessment
- National Code of Transparency
- National Data Set
- Local Benchmarking

# Revised Local Performance Framework

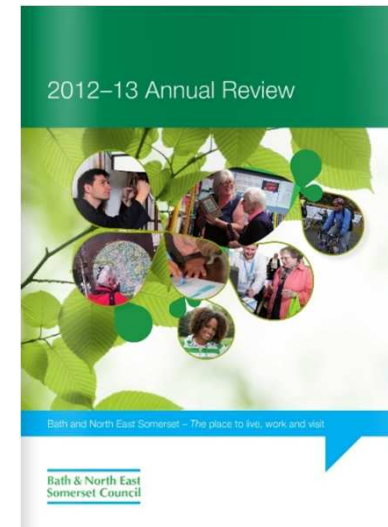


## **Revised Local Performance Framework**

- More flexibility
- Fewer indicators
- Concentrate on local priorities as well as national issues
- Better links to the Budget and Resources allocation

## **Some examples of current practice**

- Council Annual Report
- Annual Service Delivery Programme
- Scrutiny Panel Reports
  - (EYCYP March – Safeguarding and LAC service improvement Plan)
  - (PTE July – Road Accidents in Banes)
  - (ECD July – Annual Report Police Commissioner)
- Ofsted & CQC inspections
- Voice box residents Surveys
- Staff Surveys



# 'One Council' - What is it?

- Totally flexible framework that encourages us all to work together to ***better understand where we are going as an organisation.***
- Helps ***prioritise resources*** and the part we all play in shaping the future.
- Embracing change, stimulating creative thinking, innovating and ***celebrating our many achievements.***
- Being externally focused, seeing things from the perspective of the customer and delivering ***better services to our wider community.***
- ***One Conversation*** between public services and our communities, changing the way we deliver services.
- Leaders work collaboratively and managers help unblock obstacles staff encounter.

**Bath & North East  
Somerset Council**

# One Performance Conversation



Bath and North East Somerset - *The place to live, work and visit*



# Request for Members

- **What Performance Information do you want?**
- **How do you want to be involved in the “Performance Conversation”?**