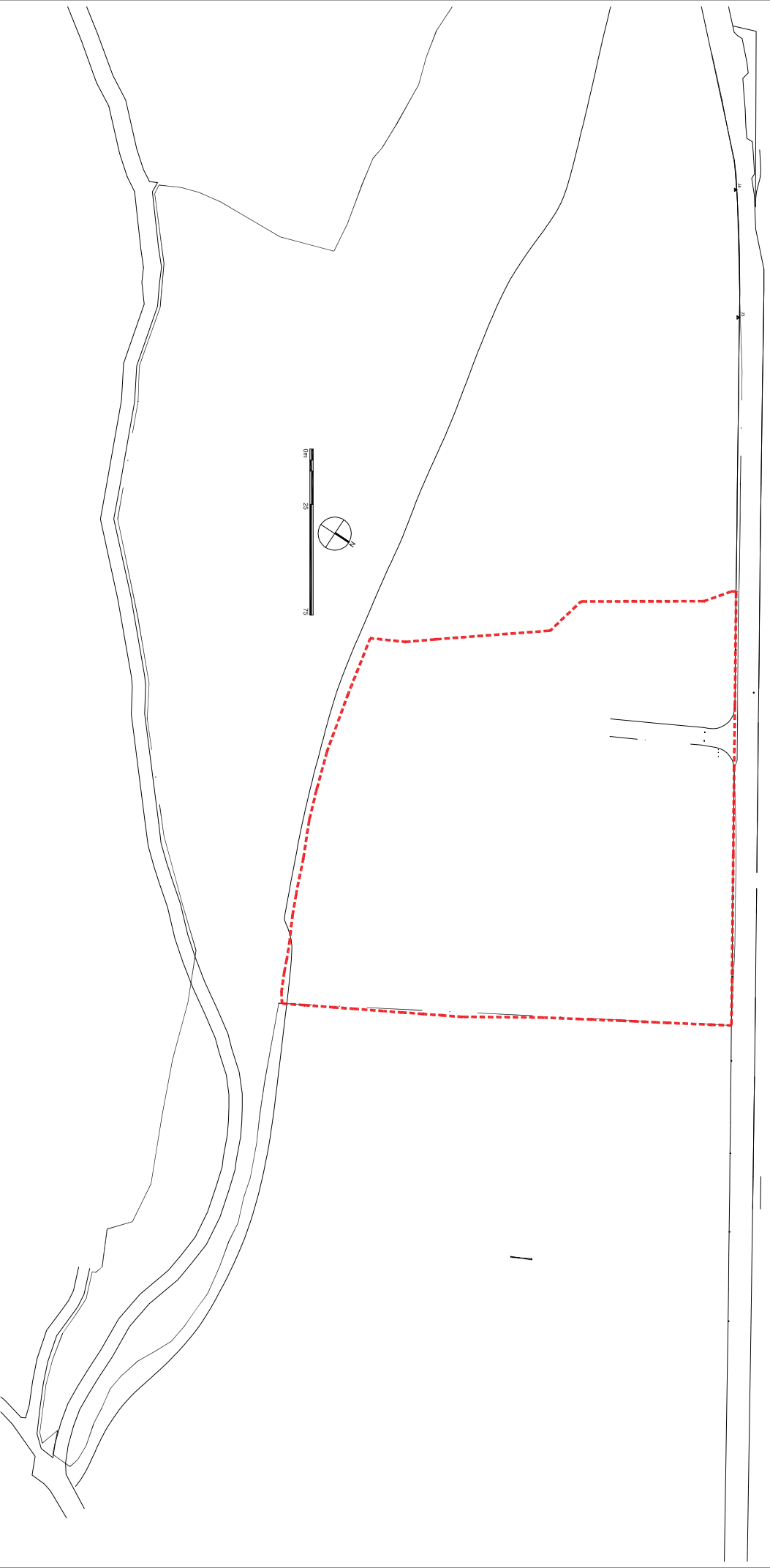


This drawing is copyright and may not be reproduced without the permission of gcp Chartered Architects Ltd. All drawings to be read in conjunction with the project specification with all works carried out in accordance with the latest British Standards and Codes of practice. Except for the purposes of assessing planning applications: this drawing is not to be scaled, use figured dimensions only. All dimensions are to be checked on site and any discrepancies between this drawing and other information given elsewhere must be reported to gcp Chartered Architects before work proceeds.



| Revision | Description | Rev By | Date |
|----------|-------------|--------|------------|
| A | First Issue | NWT | 09.03.2012 |

gcp Chartered Architects
architecture project management sustainable design
18-19 Londonderry Farm
Keynsham Road
Willisbridge
Bristol BS30 6EL
t: 0117 932 8888
f: 0117 932 4888
mail@gcparch.co.uk
www.gcparch.co.uk



Project Title: **FULLERS EARTH 2012
RESIDUAL WASTE FACILITIES**
Drawing Title: **SITE BOUNDARY PLAN**
Drawn By: NWT Checked By: - Date: 09.03.2012 Scale: 1:2500 @ A4
Status: **PRELIMINARY** Dwg. No: **12008** Rev: **A**