

PARISH LIAISON MEETING

Minutes of the Meeting held

Wednesday, 14th July, 2021, 6.30 pm

Councillors: Councillor Lisa O'Brien (Chair), Councillor Tim Ball (Cabinet Member), Councillor Manda Rigby (Cabinet Member), Councillor Dine Romero (Cabinet Member), Councillor Sarah Warren (Cabinet Member), Councillor David Wood (Cabinet Member), Councillor Sally Davis, Councillor Eleanor Jackson, Councillor Vic Pritchard, Councillor Alastair Singleton, Councillor Andy Wait and Councillor Karen Warrington

Parish Representatives: Kathy Thomas (ALCA Chair), Dawn Drury (ALCA Deputy Chair) and representatives of Bathampton PC, Chew Magna PC, Compton Dando PC, Compton Martin PC, Dunkerton & Tunley PC, Farmborough PC, High Littleton PC, Keynsham TC, Peasedown St John PC, Priston PC, Publow with Pensford PC, Radstock TC, Shoscombe PC, Timsbury PC, Wellow PC and Westfield PC

Also in attendance: Will Godfrey (Chief Executive), Anna Brunton (Forest of Avon Trust), Mark Cassidy (Tree and Woodland Officer), Mark Hayward (Community Engagement Officer), Joanna Scammell (Virgin Care), Alex Stone (Forest of Avon Trust), Claire Thorogood (Head of Contracting and Performance), Marie Todd (Democratic Services Officer) and Alison Wells (Community Engagement Officer)

1 WELCOME AND INTRODUCTIONS

The Chair welcomed everyone to the meeting.

2 APOLOGIES FOR ABSENCE

Apologies for absence were received from:

Cllrs: Alison Born, Neil Butters, Paul Crossley, Tom Davies, Kevin Guy, Duncan Hounsell and Richard Samuel

John Adler – Freshford Parish Council
Robin Campbell – Combe Hay Parish Council
Cllr David Huffadine – Hinton Blewitt Parish Council
Trudi Gilbank – Farmborough Parish Council
Kathryn Manchee – Dunkerton & Tunley and Camerton Parish Councils
Lottie Smith-Collins – Saltford Parish Council
Stowey Sutton Parish Council
West Harptree Parish Council
Whitchurch Village Council

3 URGENT BUSINESS AS AGREED BY THE CHAIR

There was no urgent business.

4 MINUTES OF PREVIOUS MEETING

The minutes of the meeting held on 24 March 2021 were confirmed as a correct record.

5 INTRODUCTION FROM THE LEADER OF THE COUNCIL

Cllr Sarah Warren, Deputy Leader of the Council, explained the changes that have been made to the B&NES Cabinet, which came into effect in May. Details of the current portfolios are set out below:

Cllr Kevin Guy – Leader of the Council
Cllr Tim Ball – Cabinet Member for Planning and Licensing
Cllr Alison Born – Cabinet Member for Adults and Council House Building (Job Share)
Cllr Tom Davies - Cabinet Member for Adults and Council House Building (Job Share)
Cllr Dine Romero – Cabinet Member for Children and Young People, Communities and Culture
Cllr Manda Rigby – Cabinet Member for Transport
Cllr Richard Samuel – Deputy Council Leader and Cabinet Member for Economic Development and Resources
Cllr Sarah Warren - Deputy Council Leader and Cabinet Member for Climate and Sustainable Travel
Cllr David Wood - Cabinet Member for Neighbourhood Services

Cllr Warren also thanked the Parish and Town Councils for the tremendous support they had given to their communities over the last 16 months during the Covid-19 pandemic.

6 UPDATE ON COUNCIL ORGANISATIONAL CHANGES

Will Godfrey, Chief Executive, outlined the key organisational changes that have taken place in B&NES over the last few months. He explained that the Council delivers 850 different services and employs around 2,500 people. It is, therefore, very important to have an organisational structure which maximises efficiency. The new structure will enable functions to deliver outcomes clearly linked to the corporate plan.

The Strategic Leadership Team now comprises of:

- Will Godfrey – Chief Executive
- Mandy Bishop – Chief Operating Officer
- Sophie Broadfield – Director of Sustainable Communities (who will be in post in August)
- Cherry Bennett – Director of People and Policy
- Andy Rothery – Chief Finance Officer

Recruitment to all senior manager roles has now been completed and all new members of staff will be in post by the end of August.

7 COMMUNITY WELLBEING HUB

Jo Scammell, Head of Commissioning and Wellbeing at Virgin Care, and Claire Thorogood, Head of Contracting and Performance at B&NES Council gave a presentation regarding the Community Wellbeing Hub. This covered the following points:

- How the wellbeing hub can provide help and support
- How and why the hub was set up
- The partner organisations involved
- Services provided
- Current response pods
- Activity and impact
- Case study illustrating how the hub can assist individuals
- Positive feedback received from members of the local community
- Looking to the future

The hub was set up at the end of March and has received over 13,000 calls. It provides assistance with many different activities and services, such as emergency food parcels, collecting prescriptions, gas and electric top-up, befriending calls, support for people who are shielding and mental health concerns. People only have to tell their story once and do not get passed around between different organisations. The partner organisations are located in one building and also hold regular multi-disciplinary meetings. There is input from both social care and the safeguarding service if necessary. There is no wish to return to a silo working arrangement and so the co-working hub model will be developed going forward.

Cllr Dine Romero, Cabinet Member for Children and Young People, Communities and Culture thanked Jo and Claire for their presentation. She also thanked all those people who have been involved with the community hub for all they have done to help and support residents during this difficult time. The hub provides a unique service involving the Council, private sector, and volunteers. Cllr Romero stated that she supports this model for future working and stressed the importance of the triage element of the service as this often identifies underlying issues that have not been addressed.

Cllr Romero then gave an update on her portfolio which covered the following issues:

- The pandemic has impacted upon children and young people in schools and colleges due to closures and the need for bubbles to self-isolate. She thanked the Public Health Team who have worked very hard with schools to address these issues.
- Free school meals will be provided over the summer holidays via vouchers and some funding has been provided by the Government for this.
- A range of activities will take place over the school holidays, including a food programme to encourage healthy eating and an activity challenge.
- The programme to improve tennis court provision in the area is well underway and a number of tennis courts have now been refurbished.
- As infection rates rise in B&NES, residents, businesses, and visitors are encouraged to remain cautious and look after each other following the Government's planned lifting of Covid-19 restrictions. From Monday 19 July,

most legal restrictions will be lifted, and new government guidance will be introduced.

- Just because the restrictions are being lifted does not mean that Covid has gone away. Case numbers are rising, frontline health and social care staff are still under consideration pressure, as are businesses and organisations.
- The good news is that the vaccine reduces the risk of getting very ill and people are urged to get their first and second jabs and to follow the new guidance. A vaccination bus will be used in the area (details will be advertised on the Council website) and there will also be drop-in vaccination sessions at the Pavilion, Bath over the next few days.

A copy of the presentation slides is attached as Appendix 1 to these minutes.

8 CABINET MEMBER UPDATES

The following Cabinet Members gave updates on their portfolios:

(a) Cllr David Wood – Cabinet Member for Neighbourhood Services

- Proposals for a new recycling centre in Keynsham will be considered by the Cabinet and the Planning Committee in July.
- There will be additional investment in a number of areas within the neighbourhood services portfolio. This will cover services such as littering on main roads, fly tipping, dog fouling, road repairs, street signs and gully clearing. Proposals to improve customer service are also being considered and this may include the provision of area officers who would be named contacts.
- There is a national shortage of delivery drivers which is affecting all local authorities and is making it difficult to recruit staff to the waste and recycling service. Additional loaders have been recruited and Cllr Wood thanked the crews for their hard work.
- Arrangements are in place whereby Parishes can obtain, via Purchase Order to Daniel Connett (Daniel.Connett@volkerhighways.co.uk), both reactive maintenance and planned maintenance works. All of the Parishes who have used this service to date are very happy with the prompt and effective service received and with the costs involved. However, this is an informal arrangement brought about by the present circumstances.
- There are no plans to introduce charges for recycling.
- The Highways Team cut rural verges (those outside of restricted speed limits) and permissive cycleways by a 1m swathe twice a year. The verges in urban areas are maintained by the Parks Team and frequency of cuts are different and more amenity related. The cut is arranged through Volker Highways using a local farmer under sub-contract and involves cutting wider areas as visibility splays at high-risk junctions. From start to finish the cut takes up to eight weeks. Cuts are usually timed during May/June and September/October, depending on growth rates. Cutting this year has continued into July. If any Parish is concerned about any particular stretch of road or junction, they should report any issues to Fix My Street using the "Report It" page on the B&NES website.

- Some verges are cut less often, where safe to do so, and an assessment is made on both ecological benefit and safety.

(b) Cllr Sarah Warren – Cabinet Member for Climate and Sustainable Travel

- A Climate and Biodiversity Festival will take place in Bath from 13-26 September 2021.
- The Council's internal performance monitoring framework will now be required to take climate change into account.
- Sustainable transport will be a priority, including active travel schemes, cycle routes and pedestrian improvements.
- The proposed closure of North Road in Bath has now been put on hold and further investigations will take place to find out whether this is the appropriate route for such a scheme.
- Liveable Neighbourhood Schemes will shortly be introduced. These neighbourhoods will be less dominated by cars, for example, there will be residents' parking, pedestrian infrastructure improvements and the ability to close some roads. The neighbourhoods will be co-designed with the local community. 15 schemes have been approved so far. Another round of applications will be considered shortly and if anyone has an area or scheme which they would like to be considered they should contact their local ward councillor who can submit an application.
- The following consultations will be taking place:
 - Bath Transport Delivery Plan – from August to September.
 - WECA Bristol to Bath Strategic Corridor "Metrobus Bristol to Bath" – from late July to early September.
 - WECA A37/A367 Bus, Walking and Cycling – to take place in the Autumn.
 - WECA West of England Mass Transit – from September to December.
- The Highways Team has ordered a number of 'Collision Route' signs that will be erected on the A367 between Odd Down Park & Ride roundabout and Skinner's Hill junction to highlight the hazards generally caused by irresponsible driving behaviours. These should be in place by early September 2021.
- A37/A367 Bus, Walking and Cycling Study – In April 2021, WECA, in partnership with B&NES, commissioned AECOM consultants to undertake transport option development work for the A37 and A367 corridors. The study aims to identify potential improvement for buses, pedestrians and cycles along the corridors and links to adjacent villages. If schemes with significant benefits are identified, the Council will be in a good position to access considerable levels of funding from WECA. To date, the consultants have undertaken a site, policy and data review and identified potential options. This work has been informed by liveable neighbourhood applications submitted by ward councillors on and adjacent to both routes, plus information from officers. A full public consultation supported by suitable documents and maps is planned in the Autumn the team will be in contact with the Parish Councils as part of the consultation process.

(c) Cllr Manda Rigby – Cabinet Member for Transport

- Cleveland Bridge in Bath is currently closed for repair, and this has impacted on traffic flows throughout the local area. This work is expected to take 12 weeks.
- The Cabinet will consider reports on Bath City Centre Security and on-street parking permits and charges, at its meeting on 20 July. There are proposals to move residents' parking charges to a more emissions-based system.
- From 19 July social distancing requirements will no longer be in force. A number of barriers were put in place to assist with social distancing and these will be removed. However, some areas wish these to remain and the Council will work with the community on this. The Council will publish a list of which barriers are to be removed.

(d) Cllr Tim Ball – Cabinet Member for Planning and Licensing

- The Council has two key consultations planned for late summer/early autumn. These are the Local Plan Update and the Transport Delivery Plan. In addition, there are a number of transport projects that are being led by WECA working in partnership with B&NES.
- B&NES Local Plan Partial Update – this will be a formal 7-week consultation on planning documents, including the Local Plan review and supplementary planning documents (SPDs) for transport and green construction. The consultation will take place in August and September 2021.

Kathy Thomas from ALCA expressed concern that B&NES Council appear to be directing a lot of the communication and consultations through the local ward councillor rather than directly contacting Parish Councils. She pointed out that the Parish Charter specifically mentions working directly with Parish Councils.

Cllr Manda Rigby explained that all the consultations mentioned are public consultations and confirmed that any design details will be discussed with local communities.

Cllr Sally Davis stated that it is important to ensure that both local Ward Councillors and Parish/Town Councils are kept informed.

9 UPDATE FROM ALCA B&NES

ALCA B&NES recently held its AGM and Kathy Thomas is now Chair of the Group with Dawn Drury as Vice Chair. Kathy Thomas gave an update covering the following issues:

- ALCA will soon have a new website.
- Due to the period of lockdown over the last 16 months, training has been provided online. This is working very well. The aim is to offer all Parish and Town Councillors some basic training with one free training session. There is a move towards more online meetings and training.
- There is some concern about the prospect of running hybrid meetings.

10 TREE PLANTING GRANTS AND INITIATIVES

Mark Cassidy, Tree and Woodland Officer and Alex Stone and Anna Brunton from the Forest of Avon Trust gave a presentation regarding tree planting grants and initiatives. This covered the following issues:

- Transforming and accelerating action for local trees and woodlands
- The importance of trees to our environment
- National and regional targets for tree planting
- Information about the Forest of Avon Trust
- The Forest of Avon Plan
- The “Trees for Climate” Fund
- What can potentially be funded
- Landowners, community groups, businesses, schools, churches and others have the opportunity to plant their own trees
- Proposed scheme design criteria and reporting standards
- The Forest of Avon Trust contact for the B&NES area is Anna Brunton, Tel: 0117 963 3383

There is a target to double tree cover and to plant 100,000 trees by 2023. It will be important to work with local communities to achieve this.

The Forest of Avon Trust was established 30 years ago and has the ability to combine resources to enable tree planting. Ash dieback has killed up to 1 in 6 trees in the region and it will be important to replant as a result.

The “Trees for Climate” fund will be available until 2025. If Parish and Town Councils have any potential tree planting projects in their areas they should get in touch with Anna Brunton or Alex Stone (Email: alex.stone@forestofavontrust.org or anna.brunton@forestofavontrust.org). An environmental impact assessment may be required in some areas, such as an AONB (Area of Outstanding Natural Beauty). Planting can be on private or public land. Further details can also be found on the Forest of Avon website - <https://forestofavontrust.org/>

A copy of the presentation slides is attached as Appendix 2 to these minutes.

11 DATES OF FUTURE MEETINGS

It was noted that the next meeting will take place on Wednesday 13 October 2021 at 6.30pm via Zoom.

Dan Norris, West of England Metro Mayor and Mark Shelford, Police and Crime Commissioner are scheduled to attend the October meeting.

The meeting ended at 8.15 pm

Chair(person)

Date Confirmed and Signed

Prepared by Democratic Services

Compassionate Community

Developing the Community Wellbeing Hub

Page 9



Service provided by



COMMUNITY WELLBEING HUB

 **0300 247 0050**

EMAIL: BATHNES.thehub@virginicare.co.uk

WEBSITE: www.compassioncb.org.uk/wellbeing

Housing

Feeling isolated,
lonely or anxious

Money advice
& benefits support

Stopping smoking

Accessing food,
transport or medication

Achieving a
healthy weight

3SG NHS

virginicare



Bath & North East
Somerset Council

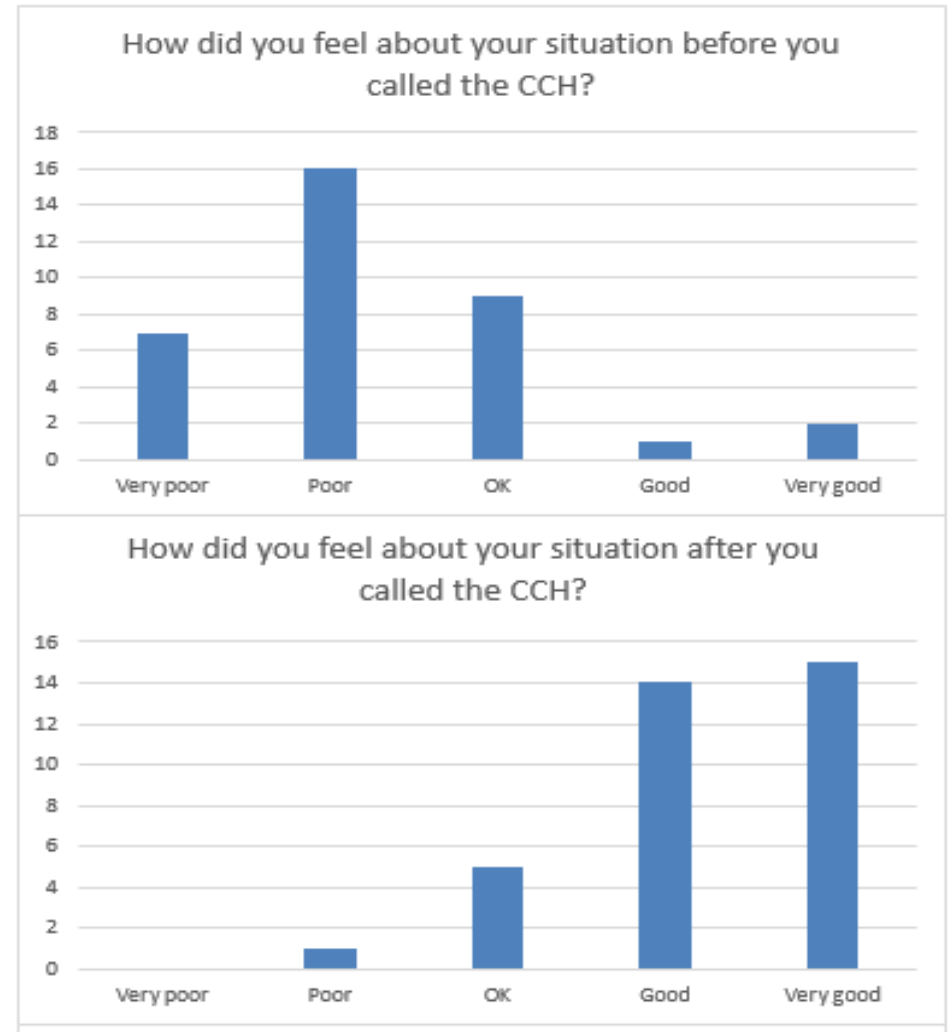
Improving People's Lives

Keeping active

Employment issues
& advice

Community Wellbeing Hub – About us

- The Community Wellbeing Hub is a collaboration between Bath & North East Somerset Council, Virgin Care and third sector organisation representatives 3SG.
- Set up in March 2020 as a response to the COVID-19 pandemic, it provides a central hub of wellbeing services for residents across Bath and North East Somerset.
- Over 14, 000 calls received since March 2020, majority dealt with at the point of Triage team (69%).
- Recently changed its name to reflect the long- term ambition to create a wellbeing service for residents across Bath and North East Somerset.



Community Wellbeing Hub – Our Partners

- Bath & North East Somerset Council
- Virgin Care BANES
- Age UK BANES
- Bath Mind
- Citizens Advice Bureau
- Curo
- Cleanslate
- DHI (Developing Health and Independence) including social prescribers
- WERN Village Agents
- 3SG COVID Volunteer Response

Community Wellbeing Hub – Our Services

Advice and Information - working with a range of partners who have expertise in money matters, benefit support, employment law and disputes.

Council services – providing public health advice, welfare support, direct access to one stop shop services.

Discharge support / Admission Avoidance – working with Age UK home from hospital team and the First Response Team to identify and provide support to people ready to come home.

Family support – working with the health visitors to support families with a range of needs including.

Housing – working with REACH (DHI, Curo and Cleanslate) to offer support regarding complex housing needs.

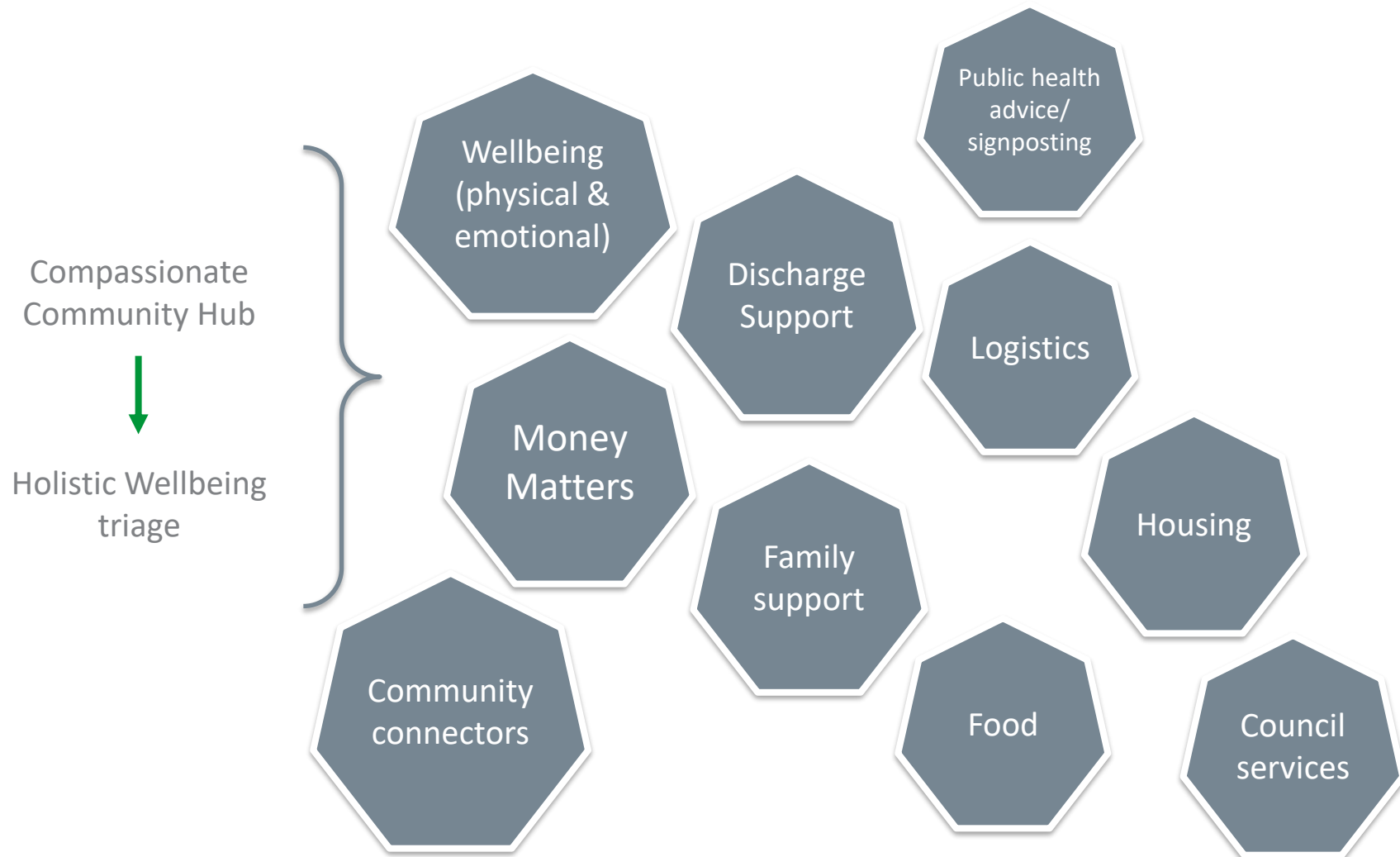
Mental Health – working with Bath Mind and other agencies to support people's mental health and help them explore what other services and support that they need.

Wellbeing Services – offering a range of services for residents to including community learning, physical health, stop smoking, managing weight, food and diabetes as well as commissioned services such as Independent Living Service.

COVID-19 support

Access to essential supplies - to assist residents during the COVID-19 pandemic who are in need of help to access shopping and picking up medication as well as emergency food.

Response pods (current)



Activity and impact

- CCH has received over 14, 000 calls into it's Triage team who have successfully resolved approx. 69% at first point of contact
- An impressive 5304 volunteering tasks have been completed by 3SG:
 - Food 3954
 - Medication 1114
 - Other (utility top up/befriending) 206
- 3SG have engaged 2139 volunteers in B&NES to support the most vulnerable during Covid-19 pandemic & 3SG volunteers have completed over £109, 626 worth of shopping on behalf of B&NES residents
- Overall 720 food parcels delivered by CCH , of which 25% were repeats. Total number of people supported is 884. 72% of the food delivered within the Bath area, compared to 28% delivered to North East Somerset residents
- Over 49,000 frozen meals distributed by the Hub to various organisations since the 20th April 2020 supplied by Bath Masonic Hall Trust Square Meals Project

Community Wellbeing Hub – Case Study

Mr T is a #retired nurse and is extremely vulnerable. Mr T has been told by his GP and surgeon that he must shield and has been shielding since March. He has been waiting for Heart Surgery, this is a longstanding condition. He also suffers from spinal tumours and a neurological condition. These conditions mean that he sometimes passes out without warning and may also lose control of his limbs. He has had to avoid opening windows and has no access to outdoor space. He cannot let anyone into his property. His mental health is extremely low. He has no family living in the UK and no friends living nearby. His heart operation has been scheduled for the 10th December at the Royal Brompton Hospital.

Page 16

The Community Hub partners have supported him with a number of issues including:-

- rescheduling his operation date, engaging with the hospital and supporting his return from hospital.
- Bath Mind offering weekly, and sometimes daily, telephone support
- volunteer shopper and hot meal service
- assisted bin collection
- investigations into community alarm and key safe installation
- exploring new technology support programmes

"Just got back from a truly inspirational afternoon at the B&NES community hub. A partnership of organisations and individuals all committed to helping residents thanks you @bathnes @banes3sg @virgincare @banescab @bathmind @volunteerbanes"



Rosie Phillipot

"Thank you for your support and partnership over these challenging three weeks !! Helping hundreds of B&NES residents in urgent need"



Ali Cook
@alidcook

"Thank you for arranging the collection of my prescription on Saturday, I was so anxious and the lovely lady made me feel so at ease and what she did wasn't a problem. This action has restored my faith in the community- it is still there!"



"More than 28,000 pieces of PPE for medical staff have been made by our amazing team of engineers for hospitals, pharmacies, care homes and GPs in and around our city. Thanks you to the efforts of all our staff"



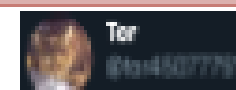
University of Bath
@UniofBath

"Helped my first neighbour via the Compassionate Community Hub today. Remember if you are self-isolating without much needed support around you, the hub is here to help. Big shout out to @bathnes @virgincare @banes3sg for working together so brilliantly"



Bex Fox
@bexbexfoxfox

Rereferred a family to your number two days ago. The support offered was reported but the family as amazing and they were in receipt of food 2 hours later. Keep up the good work, amazing!!!



Ter
@ter45077791

"Brilliant work all of you - thank you to all the teams for all that you are doing"



Ali Veeles
@AliVeeles

Absolutely thrilled my food parcel was dropped off by David yesterday, I have no money due to waiting for universal credit, we were so worried that we would run out of food. There are still angels on this earth. Thanks you



Thank you from the bottom of my heart for arranging for the lovely lady to collect my shopping for me whilst I'm self-isolating, her smile made me happy for the rest of the day. You are doing a great job all of you. She packed the bag, just like I would if I had done it myself"



Compassionate B&NES
@CompassionateBS

"Thank you @banes3sg for matching me up to my 'befriendee'. We had a lovely chat and are looking forward to lots more. You've helped me feel useful in these strange times. Very grateful to all your doing @volunteerbanes"



Anna Boneham

Looking to the future

- The compassionate community hub is moving into becoming a sustainable “Community Wellbeing Hub” with an ability to not only support vulnerable people in crisis and through the pandemic but by proactively addressing the needs of the community to keep people fit and well, without need for a statutory service intervention wherever possible.
- The service will continue to operate a strengths based approach and will ensure that provision is flexed to meet the demands that COVID measures may place on those vulnerable in BaNES.
- A theme of Wellbeing support will be adopted across all organisations under the community services contract in BaNES to ensure that the service is widely known in its support during times of isolation but with a greater focus on prevention and keeping the vulnerable physically fit and well so that they are not susceptible to COVID-19.
- The joint referral management system will be expanded to a much wider range of third sector organisations to enable further appropriate sharing of referral information, securely.
- A number of new ‘response pods’ will be added to the hub offer; education and skills support, carers support and discharge and admissions avoidance. A particular offer is being developed around discharge support considering the requirement of hospitals to ensure social distancing and the bed-based dropping across the system.
- There will be a renewed emphasis on family support and supporting vulnerable families during isolation. A public health lead will work with the hub to ensure a clear link between professional services and the community support that can be delivered to vulnerable families, during times of isolation and re-start/non restriction
- To ensure that a clear link is continued with primary care to support vulnerable people, social prescribing colleagues will attend MDT meetings and work directly alongside the hub as required.

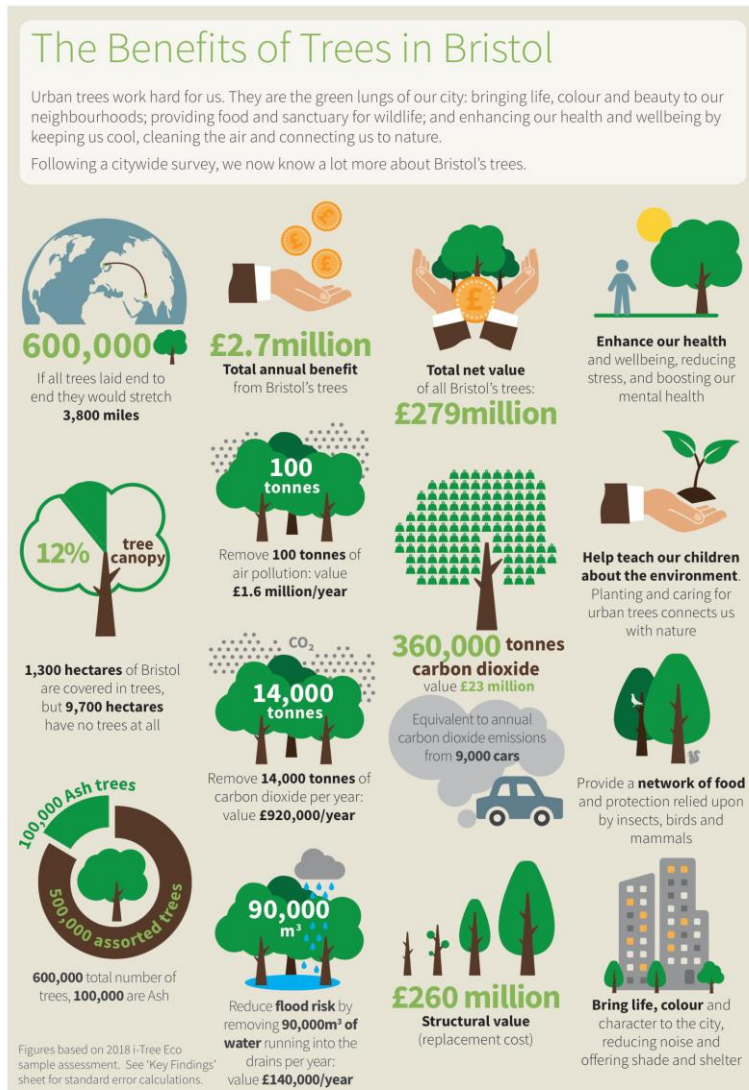
The Forest of Avon

Transforming and accelerating action
for our local trees and woodlands



England's
Community
Forests

Why do we need to care about our trees?



- Doubling tree cover in the West of England will bring an estimated £540 mn of benefits through carbon and air pollution. It will pay for itself over and over again.
- Trees are essential for so many areas of our life and for so many species to thrive, uniquely.
- We are living at a time when humans collectively have an immense ability, resource and opportunity to determine the natural environment and consequences – planting trees is one of those abilities – to increase our woodlands and simply allowing nature to bring all of the benefits it does, once we take those initial steps.

National and regional targets

- Topline target of doubling tree cover by 2050 and many other goals, covering the wide range of needs for the Forest of Avon, our trees and woodlands.
- This includes managing and preserving existing woodlands, meeting the widescale challenge of ash dieback and enabling all communities throughout the region to care for and enjoy their local trees.
- **Regional and each of the 4 authority area targets for net zero carbon emissions**
- **National net zero emissions target for 2050, Environment Bill upcoming, England Trees Action Plan released, 30,000 ha per year planting target**
- **Quality of life indicators**
- **Clean growth – jobs, skills, housing developments – healthy, happy communities where people want to live, work and visit!**

What is the Forest of Avon Trust?

- Bringing trees to people and people to trees!
- Your Community Forest – There are 11 across England and there will be more!
- Working nationally and locally, the best of both worlds – working with England's Community Forests, in partnership with the Forestry Commission/Woodland Trust and many others. Running large and smaller scale programmes and funding.
- Trees for Learning – Defra funded
- Trees for Climate – Defra funded and greatly supported

What is the Forest of Avon Plan?

- A Tree and Woodland Strategy for the West of England
- An opportunity to resolve long standing barriers to consistent high quality woodland management, tree care and tree planting
- An opportunity to engage everyone in our work with partners, authorities, local groups
- Sets out Priorities for your area, Principles for how to take action, Resources available and why we need to act now

What is the 'Trees for Climate' fund?

- An innovative new fund, now in Year 2, for a whole range of tree and woodland planting and establishment
- National programme of Englands Community Forests but locally delivered working closely with you to meet your needs
- Bespoke support suited to your needs – with up to 100% of costs payable and future maintenance costs
- We can support you to a high degree or to a lesser degree, as you need. The application process is an application form with some evidence needed which we will support you through.

What can we potentially fund?

- Planning and project management
- Exploratory checks, surveys and reports
- Supplies and equipment e.g. trees, treeguards, fencing, mulch mats
- Public access, signage and interpretation
- Site infrastructure – access, egress, seating, structures
- Community engagement activity and communications
- Flood management interventions
- Establishment period and maintenance costs



Good things happen when we work together... 1,500 trees have been planted on the Bath skyline, thanks to the hard work of Bath & North East Somerset Council, funding from the Forest of Avon Trust and the help of Grow for Life – a charity engaging local people to build life skills. The local community pulled together to plant the trees and will enjoy seeing them grow for years to come.

How can you make the most of all of this?

1. Get in touch with our team

- Anna – Bath and North East Somerset and North Somerset
- Jack – Bristol and South Gloucestershire

0117 963 3383

- With potential for up to 5 miles outside of the boundary ‘the halo!’

2. Tell everyone about the opportunity to plant their own trees!

Landowners, community groups, businesses, schools, churches...

Trees for Climate

Proposed scheme design criteria & reporting standards

Type of planting	Design criteria			Measurement unit	Reporting standard
	Stocking density & species	Open space & layout	Typical planting stock & protection		
Multi-purpose woodland (≥5.0ha)	<ul style="list-style-type: none"> ✓ Minimum of 1,600 trees per hectare; ✓ No single species to be more than 70%; ✓ Up to 25% woody shrubs; 	<ul style="list-style-type: none"> ✓ Up to 40% open space as part of good design for specific biodiversity and recreation objectives); ✓ Management prescription required for open space; ✓ Minimum 20m width; 	<ul style="list-style-type: none"> ✓ Seedlings/forest transplants/whips/cell grown; ✓ Establishment by natural colonisation (incl. assisted) acceptable – see separate planting type for details; ✓ Protection as appropriate; 	Hectares	Gross area of woodland to be reported, including up to the 40% open space within the woodland design.
Small-scale tree planting (0.5 – 4.99ha)	<ul style="list-style-type: none"> ✓ Minimum of 1100 trees per hectare; ✓ No single species to be more than 70%; ✓ Up to 25% woody shrubs; 	<ul style="list-style-type: none"> ✓ Typically 20% open space used for perimeter buffer habitat, but can be up to 40% in exceptional circumstances where woodland rides & glades integral to good design; ✓ Management prescription required for open space; ✓ Minimum 20m width; 	<ul style="list-style-type: none"> ✓ Forest transplants/whips/cell grown; ✓ Establishment by natural colonisation (incl. assisted) acceptable – see separate planting type for details; ✓ Protection as appropriate; 	Hectares	Gross area of tree planting to be reported, including up to the 40% open space within the woodland design or up to 20% buffer of open space habitat beyond net area of actual tree planting. Default open space buffer to be 20%.
Natural colonisation (≥0.5ha)	<ul style="list-style-type: none"> ✓ Must achieve minimum of 60% woody cover and 100 trees per hectare within 10 years¹; ✓ Supplementary planting may be required, before or at Year 10; 	<ul style="list-style-type: none"> ✓ Open space permitted, referencing criteria for equivalent ‘planted’ approach based on scheme size; ✓ Management prescription required for open space; ✓ Minimum 20m width; 	<ul style="list-style-type: none"> ✓ Viable seed source for ≥ 2 tree species required within 75m; ✓ Appropriate ground preparation required to facilitate germination; ✓ Grazing pressure must be removed by effectively excluding deer/livestock; ✓ Assisting natural colonisation via local seed collection and broadcasting is acceptable; 	Hectares	Gross area of woodland to be reported, including open space.

¹ Aligns to EWCO guidance: https://assets.publishing.service.gov.uk/government/uploads/system/uploads/attachment_data/file/992107/EWCO_Grant_Manual_-_Appendix_5_-_Natural_colonisation_guide_v1.0_June2021.pdf

Type of planting	Design criteria			Measurement unit	Reporting standard
	Stocking density & species	Open space & layout	Typical planting stock & protection		
Very small-scale tree planting (0.1 – 0.49ha)	<ul style="list-style-type: none"> ✓ Minimum of 1100 trees per hectare; ✓ Up to 20% woody shrubs; ✓ Fruit trees accepted as a component of woody shrubs; 	<ul style="list-style-type: none"> ✓ Up to 20% open space used to provide perimeter buffer habitat; ✓ Management prescription required for open space; 	<ul style="list-style-type: none"> ✓ Forest transplants/whips/cell grown; ✓ Protection as appropriate; 	Hectares	Gross area of tree planting to be reported, including 20% buffer area of open space habitat beyond net area of actual tree planting. Default open space buffer to be 20%.
Low density tree planting (incl. agroforestry)	<ul style="list-style-type: none"> ✓ Minimum of 25 trees per hectare; ✓ Widely spaced trees planted (singles, rows or groups) to achieve minimum final canopy cover of 20% across gross area planted; ✓ Species appropriate for objectives and location; 	<ul style="list-style-type: none"> ✓ No open space allowance; ✓ Encompasses street tree planting, urban greenspace planting, wood pasture/parkland creation, and agroforestry (silvoarable & silvopastoral) planting schemes; 	<ul style="list-style-type: none"> ✓ Forest transplants/whips/cell grown/feathered/standards; ✓ Individual tree protection, as appropriate; 	Hectares, based on assumed minimum 20% final canopy coverage ² (i.e. the area over which the 20% canopy cover will be achieved).	Gross area over which a minimum of 20% canopy cover will be achieved. Assumed typical mature canopy diameter of 10m.
Hedgerows	<ul style="list-style-type: none"> ✓ Minimum of 5 plants per linear metre; ✓ Double-staggered row planting pattern, or similar; ✓ At least 70% native and/or locally characteristic species; 	<ul style="list-style-type: none"> ✓ No open space, but requires minimum 1m herbaceous buffer each side along length of hedgerow; 	<ul style="list-style-type: none"> ✓ Seedlings/forest transplants/whips; ✓ Protection as appropriate; 	Length, converted to area in hectares	Length of hedgerow planted to be assumed to be 5m in width to convert to area in hectares.
Hedgerows with trees	<ul style="list-style-type: none"> ✓ Minimum of 5 plants per linear metre; 	<ul style="list-style-type: none"> ✓ No open space, but requires minimum 0.5m herbaceous buffer each 	<ul style="list-style-type: none"> ✓ Seedlings/forest transplants/whips/feathered ✓ Protection as appropriate; 	Length, converted to area in hectares	Length of hedgerow with trees planted to be assumed to be 10m in

² Based on FC NFI definition of woodland: <https://data.gov.uk/dataset/ae33371a-e4da-4178-a1df-350ccfcc6cee/national-forest-inventory-woodland-england-2015#:~:text=Summary%20The%20NFI%20definition%20of,than%2020%25%20of%20the%20ground.&text=The%20definition%20of%20an%20open,is%20completely%20surrounded%20by%20woodland>

Type of planting	Design criteria			Measurement unit	Reporting standard
	Stocking density & species	Open space & layout	Typical planting stock & protection		
	<ul style="list-style-type: none"> ✓ Double-staggered row planting pattern, or similar; ✓ Trees planted within hedge at average spacing of every 15 metres; ✓ At least 70% native and/or locally characteristic species 	side along length of hedgerow			width to convert to area in hectares.



This page is intentionally left blank