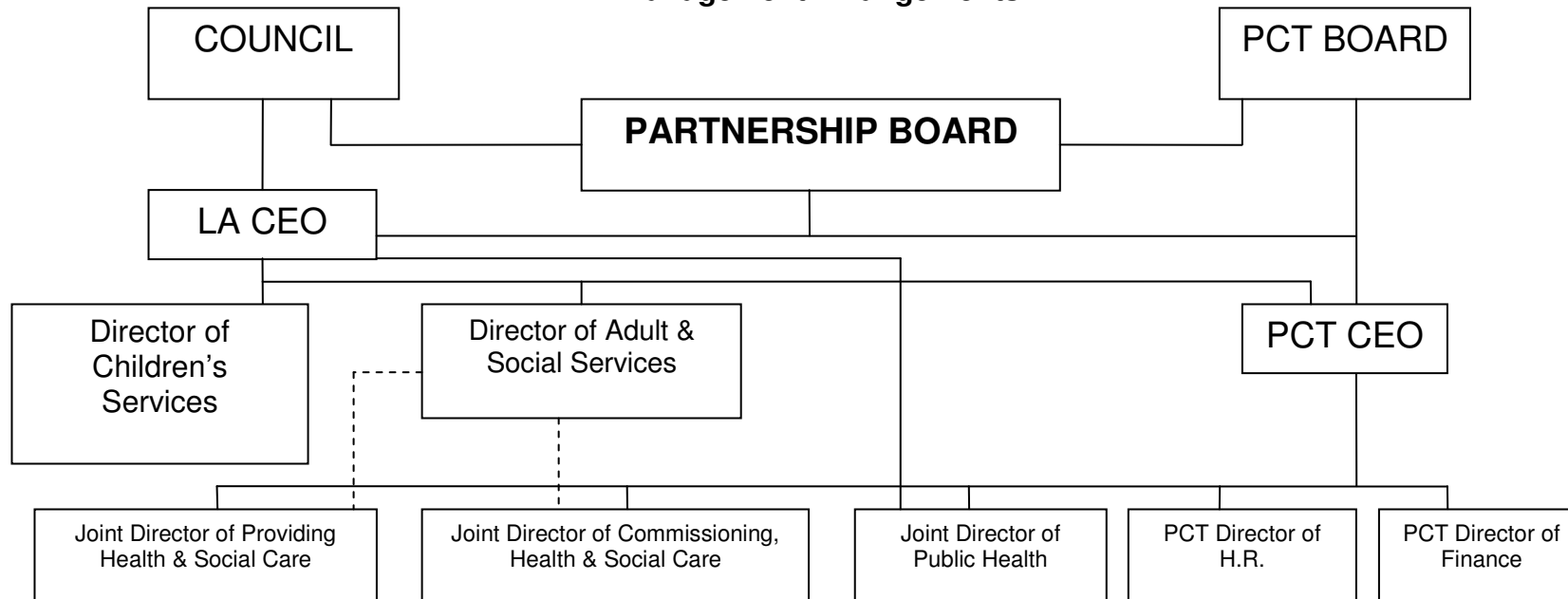


## Management Arrangements

Appn 1



### DASS

Accountable to;

- LA CEO for statutory responsibility, professional leadership and wider Council role
- PCT CEO for specified work areas

Accountable for:

- Statutory responsibilities of DASS i.e.
  - Professional Leadership of Social Workers
  - Advising the LA on the adequacy of resources to meet local needs
  - Assure LA on the quality of services
- Ensuring wider DASS responsibilities are properly embedded in the Council
- Leadership of specified work areas currently including:
  - Oversight of Key Performance Targets
  - Lead Community Team Project
  - Lead Safeguarding Vulnerable Adults
  - Provide mentorship & support to Director of Provider Service
  - Support transitional management arrangements

### PCT CEO

Accountable to:

- PCT Chair and SHA for NHS responsibilities
- Council CEO for Operational Management of agreed Adult Social Care and Housing functions

Accountable for:

- All NHS functions & representatives
- Adult Social Care (ASC) Operational Management
- Leadership of PCT, Commissioning & Providing