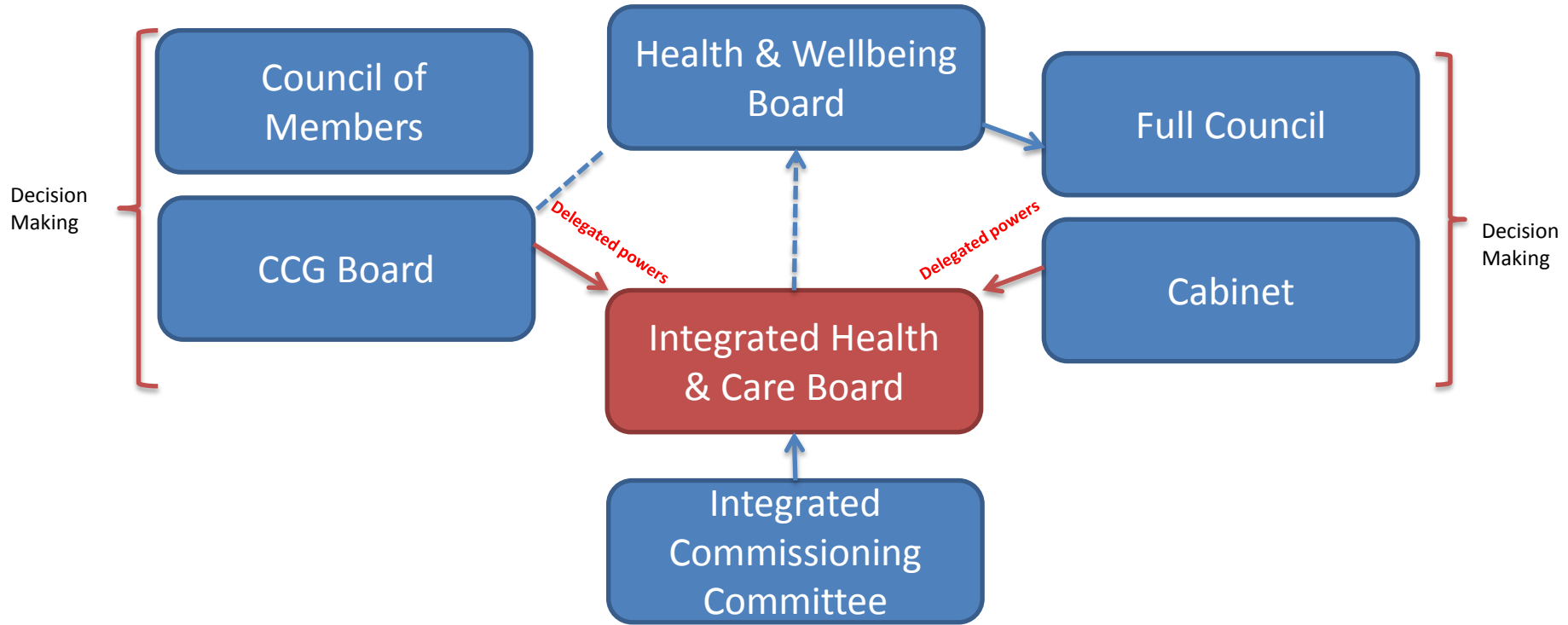


Health & Wellbeing Board - a high level strategic group with responsibility for the longer term view e.g 10 years

The Health & Wellbeing Board is a formal committee of the local authority charged with promoting greater integration and partnership between bodies from the NHS, public health and local government. It has a statutory duty, with clinical commissioning groups (CCGs), to **produce a joint strategic needs assessment** and a **joint health and wellbeing strategy** for their local population. It also has **oversight and sign off of the Better Care Fund Plan**.

The board has very limited formal powers. It is constituted as a partnership forum rather than an executive decision-making body.

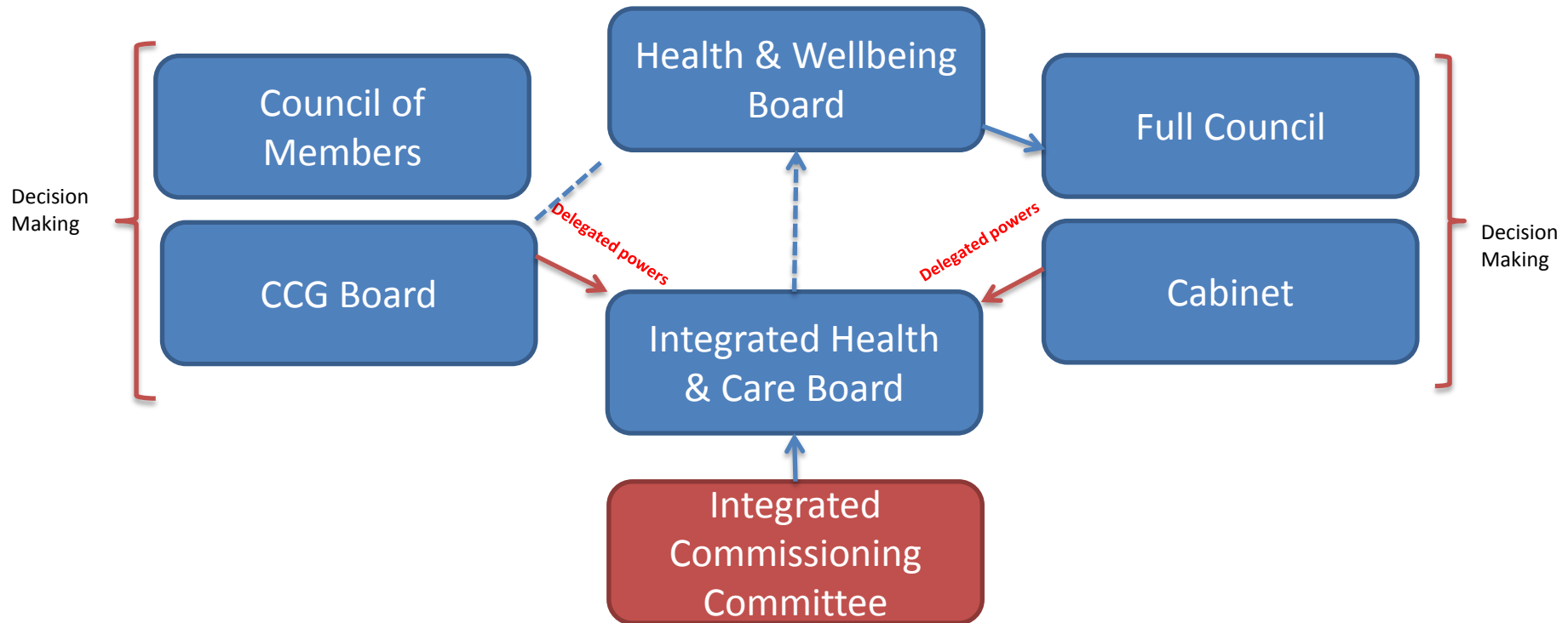
Proposed Governance Arrangements



Integrated Health & Care Board – an executive decision making body with both senior Council and CCG member representation for medium term view e.g. 5 years

The Integrated Health & Care Board will act as the single health and wellbeing commissioning body for Bath and North East Somerset. The main purpose is for transparency of joint decision making for health and care across the council and CCG. The Board will be accountable to both the CCG Board and Council Cabinet and will be responsible for **developing joint commissioning strategies** within the overall direction set by the health and wellbeing board; **implementing commissioning plans; operation of the section 75 partnership; overseeing individual schemes and service contracts, and would "hold" accountability for all pooled resources.**

Proposed Governance Arrangements



Integrated Commissioning Committee – an operational delivery group primarily working within the current year time horizon

The Integrated Commissioning Committee is a new group which will mirror some of the responsibilities of the current Joint Commissioning Committee (JCC) and will be responsible for the **operational delivery** of agreed strategy, with input from a clinical perspective. The group will have both CCG and Council members including clinical representation. As a result JCC would cease to operate.

Integrated Health & Care Commissioning - Responsibilities

Health & Wellbeing Board

COUNCIL

Accountability
Statutory Responsibilities
Regulatory Framework

CCG

Board Accountability
Statutory Responsibilities
Regulatory Framework

Sovereignty of organisations remains the same



- No formal delegation of statutory duties **but** use of a legal framework to pool resources to a far greater extent
- Integration and co-location of CCG and Council officer workforce continues
- Joint decision making through a formal joint structure with democratic and clinical involvement
- Health and Wellbeing Board continues to fulfil statutory duties in relation to JSNA and setting the strategic direction through the Health and Wellbeing Strategy